

IMPORTANT

*Report in part or whole
cannot be quoted or
reproduced*

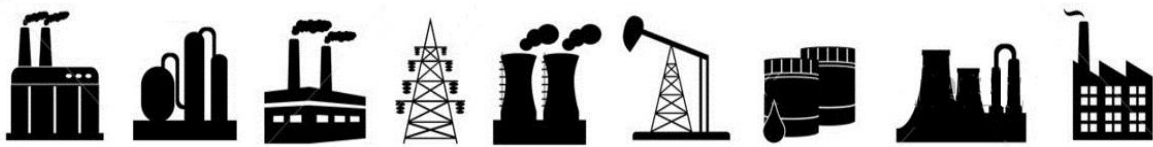
RESTRICTED

For official use only

JANUARY 2024



**MONTHLY SURVEY OF INDUSTRIAL
PRODUCTION & EMPLOYMENT IN THE PUNJAB**



BUREAU OF STATISTICS

Planning & Development Board
Government of the Punjab, Lahore
www.bos.gop.pk

PREFACE

Bureau of statistics has been issuing this Monthly Survey of Industrial Production and Employment Report since October 1972. This report provides important statistics in respect of industrial production & employment, employment cost and other aspects of manufacturing activities e.g. consumption of raw material, export of industrial products, import of raw material and productivity of labour etc. These statistics are pre-requisite for sound economic planning as well as for measuring the performance/growth of the industrial sector (GDP estimates regarding industrial sector).

This report contains statistics regarding 45 important industries, manufacturing about almost selected items, contributing 72% of the total value added of large scale manufacturing sector in the province. This report covers more than 2000 industrial units from all over the Punjab.

This report gives information regarding General Index as compared to base period 2005-06, and comprehensive analytical note over the current status of the industrial growth at different sectors. Tables of production & employment give comparisons with the previous month and the same month of the previous year as well as comparisons among financial periods. Performance analysis of 13 major items pertaining to detailed tables & graphical explanation is given in this report.

All possible efforts have been made to incorporate the latest available data in this report. It is hoped that this report will be useful to the policy makers, planners, researchers and other users of industrial/economic data in public as well as private sector.

Suggestions for further improvements will be welcomed.

(SAJID RASUL)
Director General
Bureau of Statistics,
Government of the Punjab

C O N T E N T S

Sr.#	Description	Page #
i	Explanatory Note	I – IV
ii	Table of General Index of Industrial Production	1
iii	Analytical Note: Industrial Production and Employment January 2024	2 - 3

T A B L E S

1	Production Volume of Selected Items Pertaining to Large-Scale Manufacturing Sector, January 2024 VS December 2023	4 - 5
2	Production Volume of Selected Items Pertaining to Large-Scale Manufacturing Sector, January 2024 VS January 2023	6 - 7
3	Production Volume of Selected Items Pertaining to Large-Scale Manufacturing Sector, 2023-24 (Jul - Jan:) VS 2022-23 (Jul – Jan:)	8 - 9
4	Total Employment Regarding Large-Scale Industries, January 2024, December 2023 and January 2023	10
5	Total Number of Production Workers Regarding Large-Scale Industries, December 2023, January 2024 and January 2023	11
6	Average Monthly Total Employment Regarding Large-Scale Industries, 2023-24 (Jul - Jan:) VS 2022-23 (Jul - Jan:)	12
7	Average Monthly Number of Production Workers Regarding Selected Large Scale Industries, 2023-24 (Jul - Jan:) VS 2022-23 (Jul – Jan:)	13

A N N E X U R E S

I	Performance of Cotton Textile Industry	14 - 20
II	Performance of Woollen Textile Industry	21 - 23
III	Performance of Vegetable Ghee/Cooking Oil Industry	24 - 28
IV	Performance of Beverages Industry	29 - 30
V	Performance of Sugar Industry	31 - 33
VI	Performance of Cigarettes Industry	34 - 35
VII	Performance of Cement Industry	36 - 40
VIII	Performance of Fertilizer Industry	41 - 46
IX	Performance of Footwear Industry	47 - 48
X	Performance of Leather Tanning Industry	49 - 50
XI	Performance of Paper & Paper Board Industry	51 - 52
XII	Performance of Light Engineering Industry	53 - 59
XIII	Performance of Pharmaceutical Industry	60 - 63

A P P E N D I X

A	Telephone Numbers	64
---	-------------------	----

List of Tables

Table No.	Title of Table	Page No.
1	General Index of Industrial Production	1
2	Production Volume of Selected Items Pertaining to Large-Scale Manufacturing Sector, January- 2024 VS December -2023	4
3	Production Volume of Selected Items Pertaining to Large-Scale Manufacturing Sector, January 2024 VS January 2023	6
4.	Production Volume of Selected Items Pertaining to Large-Scale Manufacturing Sector 2023-24,(July- January) VS 2022-2023 (July- January)	8
5	Total Employment Regarding Selected Large-Scale Industries, December 2023, January 2024 and January 2023.	10
6	Total Number of Production Workers Regarding Selected Large-Scale Industries December 2023, January 2024 and January 2023	11
7.	Average Monthly Total Employment Regarding Selected Large-Scale Industries 2023-24 (July- January) and 2022-23 (July- January)	12
8	Average Monthly Production Workers regarding selected Large-Scale Industries 2023-24 (July- January) and 2022-23 (July- January)	13
9	Production of Man Made/Blended Yarn and Cloth	15
10	Detail of the Purchase, Sale Consumption and Stock of Cotton Bales.	17
11	Production, Purchase, Consumption, Sale and Stock of Cotton Yarn	18
12	Production .Purchase, Sale and Stock of Cotton Cloth	19
13	Employment, Wages/Salaries of Cotton Textile Industry	20
14	Manufacturing Activity of Woollen Industry	23
15	Detail of the Stock Purchase, Consumed and Sale of Edible Oil	26
16	Detail of Production, Sale and Stock of Vegetable Ghee/Cooking Oil	27
17	Employment, Wages/Salaries of Vegetable Ghee/Cooking Oil Industry	28
18	Manufacturing Activity of Beverages Industry	30
19	Manufacturing Activity of Sugar Industry	32
20	Employment, Wages/Salaries of Sugar Industry	33
21	Manufacturing Activity of Cigarettes Industry	35
22	Detail of Production, Consumption and Stock of Clinker	38
23	Detail of Production, Sale and Stock of Cement	39
24	Employment and Wages/Salaries of Cement Industry	40
25	Detail of Production, Sale and Stock of Urea and Amm. Sulphate	43
26	Detail of Production, Sale and Stock of Super Phosphate and Amm.Nitrate	44
27	Detail of Production, Sale and Stock of Nitro Phosphate	45
28	Employment Wages/Salaries of Fertilizer Industry	46
29	Manufacturing Activity of Footwear Industry	48
30	Manufacturing Activity of Leather Tanning Industry	50
31	Manufacturing Activity of Paper and Paper Board Industry	51
32	Manufacturing Activity of Light Engineering Industry	57
33	Total Employment of Light Engineering Industry	58
34	Production Workers of Light Engineering Industry	59
35	Manufacturing Activity of Pharmaceutical Industry	62
36	Employment and Wages/Salaries of Pharmaceutical Industry	63

List of Figures

Fig. No.	Title of Figures	Page No.
1	Quantum Index of Manufacturing Industries	1
2	Production of Cotton Yarn	16
3	Production of Cotton Cloth	16
4	Production of Knitting Wool	21
5	Production of Woollen Yarn	22
6	Production of Woollen and Worsted Cloth	22
7.	Production of Vegetable Ghee	24
8	Production of Cooking Oil	25
9	Production of Vegetable Ghee/Cooking Oil	25
10	Production of Fruit Juices	29
11	Production of Soft Drinks	29
12	Production of Sugar	31
13	Production of Cigarettes	34
14	Production of Clinker	36
15	Production of Cement	37
16	Production of Urea	41
17	Production of Super Phosphate	42
18	Production of Amm. Nitrate	42
19	Production of Nitro Phosphate	42
20	Production of Footwear	47
21	Production of Upper Leather	49
22	Production of Sole Leather	49
23	Production of Paper	51
24	Production of Paper Board	51
25	Production of Re-Rolled Steel	53
26	Production of Bicycles	54
27	Production of Electric Fans	55
28	Production of Electric Motors	56
29	Production of Diesel Engines	56
30	Production of Tablets	60
31	Production of Liquids	61
32	Production of Capsules	61
33	Production of Injections	61

EXPLANATORY NOTE

To have current information on production, employment and other aspects of manufacturing activities e.g. consumption of raw material, wages/salaries, export of industrial products, imports of raw material and productivity of labour etc. for economic planning, evaluation of industrial development and taking other policy related decisions, Government of the Punjab had decided in October 1972 to undertake a Monthly Survey on Industrial Production and Employment.

Prior to this Survey, the only data available on Industrial Statistics was the results of Census of Manufacturing Industries (C.M.I) that were available with the time lag of 2-3 years with a question mark on very high rate of non- response. This high rate of non-response affected the consistency of the results. Therefore, these results were of little use for current and future planning except for historical, research and academic interests/purposes. So Monthly Survey of Industrial Production and Employment was considered to be suitable for Economic Planning as well as for measuring the performance/growth of the industrial sector.

Only 15 industries and their 113 factories were selected to cover initially in October 1972. This report now contains statistics regarding 45 important industries, manufacturing about 100 selected items, contributing 72% of the total value added of large scale manufacturing sector in the province based on base year 2005-06 and covers more than 2000 industrial units from all over the Punjab.

Questionnaire

Keeping in view the pre-determined purpose the data on Industrial Inputs (raw material), Outputs (finished products), Sales, exports, Stocks, Employment & Employment Cost etc. are designed on the available information from CMI returns. These Questionnaires have been pre-tested in some of the large units manufacturing the respective items.

Methodology

Basically it is a mail enquiry. The respondents are the factory owners or the factory management (i.e. Accountants, Finance Manager, and Mill Manager etc.) The blank questionnaires of various industries are used to be mailed out to the factories for their use for the supply of the required information every month. About 60% to 70% questionnaires are received through mail. While the remaining non-responding industrial units are visited by the officers/officials of this Bureau during the third week of the following month for collection of requisite information.

Editing

The received questionnaires are statistically examined for the accuracy and consistency by comparing the production and employment levels of the current month with previous month and same month of the last year. The information of the factories which could not be collected during the month due to the absence of the concerned person or due to other reason is estimated on the basis of the last months average production or the last month information is repeated.

Tabulation

The information collected is tabulated on working sheets prepared for this purpose and also on computer for each industry/factory. Seven tables are prepared every month on production, total employment and production workers as well as comparisons are made with respect to last month, with same month of the last year and among current & previous financial years.

General index / Quantum Index of Manufacturing (QIM)

At present Punjab Bureau of Statistics is computing Index on Industrial Production using 2005-06 as base year. Index series is given in this report by using Laspayer's Index since 2006-07.

This Bureau initially prepared Index Series using 1970-71 as base year. Later on the base year was shifted to 1980-81 & then in October 2011 the base year was sifted to 2005-06. Majority of some new items are included in the new index series due to their relative weight and some items were discarded due to their negligible weights.

Formula of Quantum Index

$$QIM = \frac{\sum_{i=1}^n \frac{q_{im}}{q_{io}} w_i}{\sum_{i=1}^n w_i} \times 100$$

q_{im} = Production of i^{th} item during the current month

q_{io} = Average Production of the same i^{th} item in the base period (2005-06).

w_i = Weight of the i^{th} item in the base year (2005-06).

$\sum w_i$ = total weight of 45 large scale industries in the base period with respect to the total value added of all the industries covered in CMI in the base year (2005-06).

Final Product

Final product is a CIS report that contains QIM series, analytical note on the performance of Industrial Sector in the province, seven tables, and detailed performance report of some important industries as well.

User Agencies

- i. Ministry of Industries & Production, Government of the Pakistan, Islamabad.
- ii. Pakistan Bureau of Statistics, Government of Pakistan, Islamabad.
- iii. Provincial Bureaus of Statistics, Government of Sindh, KPK and Baluchistan.
- iv. Planning & Development Department, Government of the Punjab.
- v. Punjab Economic Research Institute (PERI).
- vi. Department of Commerce & Industry, Government of the Punjab.
- vii. State Bank of Pakistan

IMPORTANT DEFINITIONS

Factory

An entity where manufacturing process is carried out on any day of the preceding thirty days and in any part of which manufacturing process is being carried on with or without the aid of power or through chemical process. It does not include the Mine subject which comes under the operation of Mines Act 1923.

Large Scale Manufacturing Industries

Establishments where ten or more employees are working are classified as large scale industry.

Employment

This item include all full time and part time employees on the payrolls of operating manufacturing establishment during any part of the pay period of the month specified on the questionnaire. It should include all the employees on paid sick leave paid holidays, and paid vacations. Proprietors and partners of unincorporated business may not be included.

Production Workers

The “Production Workers” includes workers (up through the line-supervisor level) engaged in fabricating, processing, assembling, inspecting, receiving, storing, handling, packing, ware-housing, shipping (but no delivering), maintenance, repair, product development, auxiliary production for plant’s own use (e.g., power plant). Record keeping and other services closely associated with these production operations at the establishment covered by the report.

Non-Production Workers

The employees those are not involved directly in the manufacturing process are called non-production workers. E.g. Managers, Assistants, Clerks, Drivers, Peons, Malies and Chowkidars etc.

Employment Cost

Wages and salaries of all employees including production and non-production workers is called employment cost.

TABLE 1: GENERAL INDEX OF INDUSTRIAL PRODUCTION
FOR THE PERIOD JULY 2017 – JANUARY 2024
(2005-06=100)

MONTH/ YEAR	2017 - 18	2018 - 19	2019 - 20	2020 - 21	2021 - 22	2022 - 23	2023 - 24
JUL:	152.5	156.5	155.5	160.2	171.1	161.6	157.5
AUG:	154.7	154.3	152.8	155.2	171.8	165.9	163.6
SEP:	152.9	158.1	159.3	169.3	171.0	170.9	164.2
OCT:	160.1	168.7	171.7	176.5	177.6	172.2	160.4
NOV:	153.1	160.6	167.8	179.5	185.1	171.5	159.8
DEC:	178.1	168.7	182.2	216.6	213.2	221.8	208.3
JAN:	213.9	210.3	202.2	208.5	220.5	229.3	223.6
FEB:	222.1	198.9	203.5	207.4	225.1	238.4	
MAR:	245.0	251.9	186.9	213.6	217.8	214.3	
APR:	186.5	197.9	140.0	188.4	183.9	163.6	
MAY:	168.2	175.3	140.0	179.3	172.3	160.9	
JUN:	161.9	160.0	146.3	172.3	181.3	160.3	
Average*	176.8	178.1	166.0	184.5	189.8	183.8	175.1

* = Geometric Mean

Fig. 1 **Graph of Quantum Index of Manufacturing Industries.**

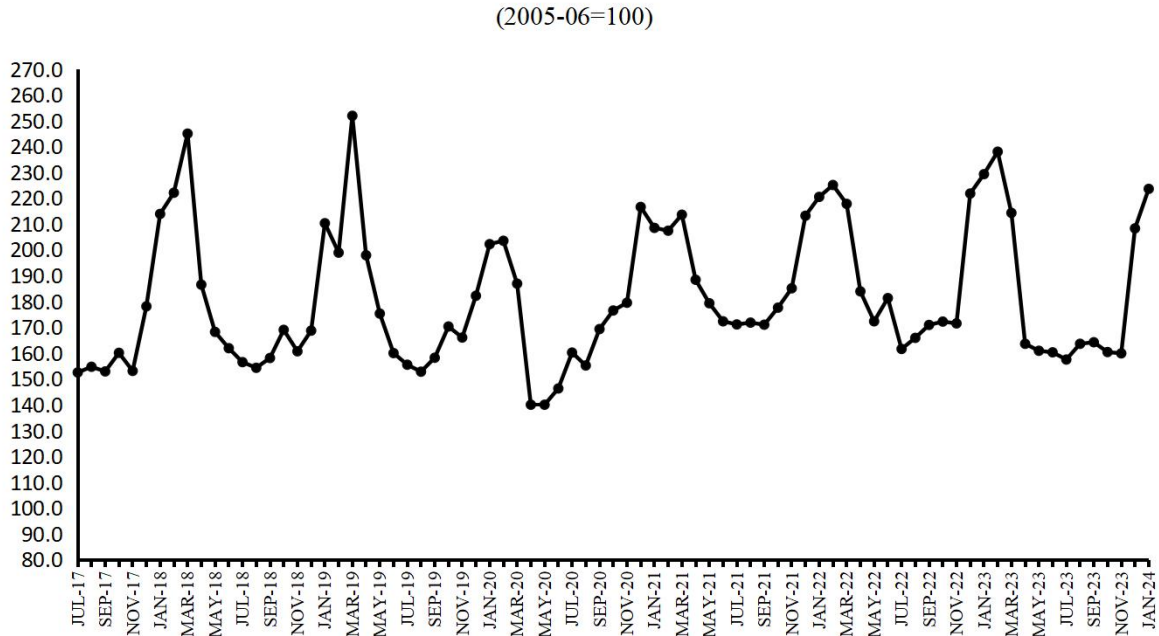


Figure: Graph of QIM for the period of July 2017 to JANUARY 2024

ANALYTICAL ANALYSIS

INDUSTRIAL PRODUCTION AND EMPLOYMENT (JANUARY 2024)

Coverage

This report covers 2041 industrial units pertaining to large scale industries which contribute about 72 percent of the total value added of Large-Scale Manufacturing sector in the Punjab.

Industrial Production Index

Industrial Production Index for the month of January-2024 stood at 223.6 against 208.3 and 229.3 as compared to December-2023 and January-2023 respectively. Index Series since July-2017 is given in Table-1 on previous page.

Production January 2024 VS December 2023 (Table-2)

Overall production during the month of January-2024 was 7.3 percent higher than December-2023.

The production was lower in case of Cigarettes (5.2%), Cement (16.5%), Fabricated Metal Products/HMC (12.5%) and Air-Conditioners (5.6%).

The production was higher in case Sugar (34.9%), Soft drink & Juices (26.3%) and Automobiles Cars/Trucks (5.7%).

Production January 2024 VS January 2023 (Table-3)

Overall production during January-2024 was 2.5 percent lower than January-2023.

The production was lower in case of Dairy Products (32.7%), Wheat Milling (5.5%), Soft drink & Juices (7.1%), Cigarettes (42.1%), Cloth/M.M Blended Cloth (6.6%), Basic Inorganic Chemicals/Acids (16.7%), Cement (18.5%), Steel Bar/ Angles (8.3%), Fabricated Metal Products/HMC (17.6%), Diesel Engines (21.7%), Motor Cycles (16.3%) and Electric Motors (9.5%).

The production was higher in case of Sugar (5.2%), Jute Textiles (15.5%), Footwear (9.6%), Ply Wood (30.1%), Pharmaceuticals (17.5%), Fertilizers (13.6%), Paints & Varnishes (17.2%), Tyres & Tubes (6.1%), Soap (5.1%), Petroleum Products (5.7%), Tractors (430.0%), Automobiles Cars/Trucks (5.7%), Bicycles (12.0%), Electric Motors (15.6%), Air-Conditioners (49.0%) and Agriculture Implements (6.5%).

Production July-January 2023-24 VS July-January 2022-23 (Table-4)

Overall production during July-January (2023-24) was 4.3 lower than July-January (2022-23).

The production was lower in case of Dairy Products (21.8%), Soft Drinks & Juices (9.1%), Cigarettes (34.6%), Cotton/M. M Blended Yarn (9.0%), Cloth/M. M Blended Cloth (11.1%), Upper Leather (8.7%), Basic Inorganic Chemicals/Acids (18.5%), Cement (7.4%), Steel Bars/Angles (10.3%), Fabricated Metal Products/HMC (55.6%), Automobile Cars/Trucks (31.1%), Diesel Engines (32.4%), Motor Cycles (19.7%), Electric Motors (15.6%), Air Conditioner (36.7%) and Refrigerators/Deep Freezers (15.8%).

The production was higher in case of Vegetable Ghee/Cooking Oil (7.1%), Jute Textiles (5.3%), Footwears (7.0%), Ply Wood (10.4%), Pharmaceuticals (13.6%), Fertilizers (6.6%), Paints & Varnishes (6.5%), Petroleum Products (11.1%) , Glass Sheets (8.6%), Tractors (43.4%), Safety Razor Blades (5.4%) and Agriculture Implements (8.2%).

Employment January 2024 VS December 2023 and January 2023 (Table-5)

Total employment during January 2024 was 4.1 percent and 2.0 percent higher than December 2023 and January 2023 respectively.

Average Employment July-January 2023-24 VS July-January 2022-23 (Table-7)

Average monthly employment during the period of July-January (2023-24) was 3.4 percent lower than the corresponding period of the previous year.

Table 2: Production Volume of Selected Items Pertaining to Large-Scale Manufacturing Sector, January 2024 VS December 2023

Group/Items	No. of Units Covered in Jan: 2024	Weight with 2005-06 base	Unit of Quantity	Production		Index of Production in Jan: 2024 with Dec: 2023
				Jan: 2024	Dec: 2023	
I Food Drinks & Tobacco	910					
1 Vegetable Ghee/Cooking Oil	44	5.00	M.Tons	102871	102588	100.3
i) Vegetable Ghee	44		M.Tons	82983	82871	100.1
ii) Cooking Oil	18		M.Tons	19888	19717	100.9
2 Dairy Products	8	4.13				95.1
i) Process/UHT Milk		1.62	`000` Litres	41112	40262	102.1
ii) Milk Powder		0.87	M.Tons	255	250	102.0
iii) Cheese		0.01	M.Tons	293	291	100.7
iv) Butter/ Desi Ghee		0.33	M.Tons	269	267	100.7
v) Cream		1.04	M.Tons	572	569	100.5
vi) Yoghurt		0.26	M.Tons	0	0	
3 Wheat Milling	776	1.25	M.Tons	781138	765238	102.1
4 Sugar	44	3.77	M.Tons	1675315	1241857	134.9
5 Tea (Blended)	3	0.03	M.Tons	7589	7577	100.2
6 Starch & its Products	2	0.56	M.Tons	37062	36972	100.2
i) Starch			M.Tons	22936	22915	100.1
ii) Glucose			M.Tons	14126	14057	100.5
7 Soft Drinks & Juices	30	0.82	`000` Litres	121729	96385	126.3
i) 7-up Coca Cola etc.	17		`000` Litres	108411	82479	131.4
ii) Fruit Juices	16		`000` Litres	10259	9465	108.4
iii) Syrups & Squashes	2		`000` Litres	3059	4441	68.9
8 Cigarettes	3	0.59	M. Nos	863	910	94.8
II Textiles	312					
1 Cotton Textiles	285					
i) Cotton/M. M Blended Yarn	247	15.40	M.Tons	125571	125374	100.2
ii) Cloth/M. M Blended Cloth	48	10.20	000 Mtrs.	57992	57889	100.2
2 Woolen Textiles	21	0.52	M.Tons	700	718	97.5
i) Woolen Yarn	14		M.Tons	678	696	97.4
ii) Knitting Wool	3		M.Tons	0	0	
iii) Woolen & Worsted Cloth	14		M.Tons	22	22	100.0
iv) Carpets	5	0.77	000 Mtrs.	0	0	
3 Jute Textiles	6	0.28	M.Tons	5136	4975	103.2
i) Jute Sacking				3288	3191	103.0
ii) Jute Hessian				1237	1182	104.7
iii) Jute Twine				611	602	101.5
III Leather Rubber & Plastic Products	147					
1 Leather Tanning	106					
i) Upper Leather	95	0.49	000 Sq. Mtrs.	800	794	100.8
ii) Sole Leather	11		M.Tons	14	14	100.0
2 Footwear	41	0.90	000 Pairs	2902	2902	100.0
IV Ply Wood	6	0.44	000 Sq. Feet	661	655	100.9
V Paper & Paper Board	47	4.19	M.Tons	57295	56485	101.4
1 Paper				22090	20765	106.4
i) Writing			M.Tons	9510	9719	97.8
ii) Printing			M.Tons	6931	5299	130.8
iii) Packing & Others			M.Tons	5649	5747	98.3
2 Paper Board			M.Tons	35205	35720	98.6
VI Chemical & Petroleum Products	139					
1 Pharmaceuticals	36	1.15				98.8
i) Tablets	28	0.38	000 Nos.	302102	298724	101.1
ii) Liquids (Syrups & Drops)	27	0.48	000 Ltrs.	1864	1879	99.2
iii) Capsules	19	0.08	000 Nos.	48187	49898	96.6
iv) Injections	12	0.14	000 Nos.	14671	14578	100.6
v) Ointments	7	0.03	Kgs.	52119	51458	101.3
vi) Galenicals	6	0.04	000 Ltrs.	2	3	66.7
2 Basic Inorganic Chemicals/Acids	8	1.34		89544	87120	102.8
i) Caustic Soda	2		M.Tons	22111	21987	100.6
ii) Hydrochloric Acid	2		M.Tons	43960	42480	103.5
iii) Chlorine Liquids	2		M.Tons	1776	1487	119.4
iv) Soda Ash	2		M.Tons	19587	18754	104.4
v) Sulphuric Acid	5		M.Tons	2110	2412	87.5

Group/Items	No. of Units Covered in Jan: 2024	Weight with 2005-06 base	Unit of Quantity	Production		Index of Production in Jan: 2024 with Dec: 2023
				Jan: 2024	Dec: 2023	
3 Fertilizers	7	7.18	M.Tons	458181	457510	100.1
i) Urea	4		M.Tons	318002	317452	100.2
ii) Amm. Nitrate	1		M.Tons	74180	74587	99.5
iii) Amm. Sulphate	0		M.Tons	0	0	
iv) Super Phosphate	1		M.Tons	0	0	
v) Nitro Phosphate	1		M.Tons	65999	65471	100.8
4 Paints & Varnishes	12	0.65		11381	11293	100.8
i) Paints		0.01	M.Tons	7360	7324	100.5
			`000` Litres	3992	3940	101.3
ii) Varnishes		1.04	M.Tons	16	16	100.0
		0.26	`000` Litres	13	13	100.0
5 Tyres & Tubes	6	0.12	`000` Nos.	3392	3381	100.3
i) Cycle Tyres				360	356	101.1
ii) Automobile Tyres				476	473	100.6
iii) Cycle Tubes				562	560	100.4
iv) Automobile Tubes				1994	1992	100.1
6 Soap	62	0.07	M.Tons	21714	21612	100.5
i) Toilet Soap	7			3593	3581	100.3
ii) Washing Soap	62			18121	18031	100.5
7 Matches	2	0.00	M. Box * 40 Sticks	646	646	100.0
8 Synthetic Fibre	4	0.95	M.Tons	42510	42418	100.2
9 Petroleum Products	2	0.99	`000` Litres	559930	558237	100.3
i) Petrol (LPG)			`000` Litres	12578	12900	97.5
ii) J.P.			`000` Litres	46984	45744	102.7
iii) White Kerosene			`000` Litres	1860	2025	91.9
iv) H.S. Diesel			`000` Litres	215857	214753	100.5
v) Diesel Fuel			`000` Litres	0	0	
vi) Furnace Fuel			`000` Litres	107648	106597	101.0
vii) Solvent Oil			`000` Litres	0	0	
viii) Lubricating Oil			`000` Litres	0	0	
ix) Bitumen 80/100			`000` Litres	11713	11683	100.3
x) Blown Bitumen Products			`000` Litres	0	0	
xi) Premium M.G.			`000` Litres	163290	164535	99.2
xii) Naphtha			`000` Litres	0	0	
VII Non-Metalic & Mineral	21					
1 Glass Sheets	9	0.19	M.Tons	24321	24245	100.3
2 Cement	12	3.91	M.Tons	1563532	1871814	83.5
VIII Engineering Products	459					
1 Steel Bars/ Angles	41	1.06	M.Tons	22101	22010	100.4
2 Fabricated Metal Products/HMC	1	0.53	M.Tons	14	16	87.5
3 Tractors	4	0.86	Nos.	3917	3840	102.0
4 Automobiles Cars/Trucks	1	1.65	Nos.	571	540	105.7
5 Diesel Engines	15	0.06	Nos.	126	128	98.4
6 Motor Cycles	17	0.13	Nos.	82164	79863	102.9
7 Bicycles	3	0.15	Nos.	13214	13145	100.5
8 Electric Fans	126	0.11	Nos.	148714	150154	99.0
i) Ceiling				86419	88174	98.0
ii) Pedestal				22416	22546	99.4
iii) Others				39879	39434	101.1
9 Electric Transformers	3	0.00	Nos.	1834	1810	101.3
10 Electric Motors	30	0.52	Nos.	1359	1362	99.8
11 Switch Gears	3	0.01	Nos.	909	897	101.3
12 Washing Machines	20	0.00	Nos.	31160	30421	102.4
13 Electric Meters	4	0.19	Nos.	186164	183542	101.4
14 Air-Conditioners	5	0.14	Nos.	3219	3410	94.4
15 Refrigerators/Deep Freezers	5	0.31	Nos.	28832	29014	99.4
16 Safety Razor Blades	1	0.14	Mill. Nos.	93	91	102.2
17 Agricultural Implements	151	0.38	Nos.	1269	1260	100.7
i) Chaff Cutter	54			720	716	100.6
ii) Sugarcane Machines	35			3	2	150.0
iii) Wheat Thrashers	30			54	53	101.9
iv) Others (Misc. Imp.)	43			492	489	100.6
18 Textiles Machinery	29	0.01		56	57	98.2
i) Power Looms	20		Nos.	52	53	98.1
ii) Bobbins	5		000 Nos.	0	0	
iii) Shuttles	6		000 Nos.	4	4	100.0
General Index	2041	72.14		223.6	208.3	107.3

Table 3: Production Volume of Selected Items Pertaining to Large-Scale Manufacturing Sector, January 2024 VS January 2023

Group/Items	No. of Units Covered in Jan: 2024	Weight with 2005-06 base	Unit of Quantity	Production		Index of Production in Jan: 2024 with Jan: 2023
				Jan: 2024	Jan: 2023	
I Food Drinks & Tobacco	910					
1 Vegetable Ghee/Cooking Oil	44	5.00	M.Tons	102871	103798	99.1
i) Vegetable Ghee	44		M.Tons	82983	84474	98.2
ii) Cooking Oil	18		M.Tons	19888	19324	102.9
2 Dairy Products	8	4.13				67.3
i) Process/UHT Milk		1.62	`000` Litres	41112	39609	103.8
ii) Milk Powder		0.87	M.Tons	255	1525	16.7
iii) Chees		0.01	M.Tons	293	1156	25.3
iv) Butter/ Desi Ghee		0.33	M.Tons	269	512	52.5
v) Cream		1.04	M.Tons	572	767	74.6
vi) Yoghurt		0.26	M.Tons	0	0	
3 Wheat Milling	776	1.25	M.Tons	781138	826453	94.5
4 Sugar	44	3.77	M.Tons	1675315	1591828	105.2
5 Tea (Blended)	3	0.03	M.Tons	7589	8458	89.7
6 Starch & its Products	2	0.56	M.Tons	37062	36065	102.8
i) Starch			M.Tons	22936	21454	106.9
ii) Glucose			M.Tons	14126	14611	96.7
7 Soft Drinks & Juices	30	0.82	`000` Litres	121729	131005	92.9
i) 7-up Coca Cola etc.	17		`000` Litres	108411	113829	95.2
ii) Fruit Juices	16		`000` Litres	10259	12385	82.8
iii) Syrups & Squashes	2		`000` Litres	3059	3337	91.7
8 Cigarettes	3	0.59	M. Nos	863	1491	57.9
II Textiles	312					
1 Cotton Textiles	285					
i) Cotton/M. M Blended Yarn	247	15.40	M.Tons	125571	128590	97.7
ii) Cloth/M. M Blended Cloth	48	10.20	000 Mtrs.	57992	62090	93.4
2 Woolen Textiles	21	0.52	M.Tons	700	670	104.5
i) Woolen Yarn	14		M.Tons	678	650	104.3
ii) Knitting Wool			M.Tons	0	0	
iii) Woolen & Worsted Cloth	14		M.Tons	22	20	110.0
iv) Carpets	5	0.77	000 Mtrs.	0	0	
3 Jute Textiles	6	0.28	M.Tons	5136	4447	115.5
i) Jute Sacking				3288	3068	107.2
ii) Jute Hessian				1237	1080	114.5
iii) Jute Twine				611	299	204.3
III Leather Rubber & Plastic Products	147					
1 Leather Tanning	106					
i) Upper Leather	95	0.49	000 Sq. Mtrs.	800	764	104.7
ii) Sole Leather	11		M.Tons	14	16	87.5
2 Footwear	41	0.90	000 Pairs	2902	2648	109.6
IV Ply Wood	6	0.44	000 Sq. Feet	661	508	130.1
V Paper & Paper Board	47	4.19	M.Tons	57295	56557	101.3
1 Paper				22090	21953	100.6
i) Writing			M.Tons	9510	8911	106.7
ii) Printing			M.Tons	6931	7307	94.9
iii) Packing & Others			M.Tons	5649	5735	98.5
2 Paper Board			M.Tons	35205	34604	101.7
VI Chemical & Petroleum Products	139					
1 Pharmaceuticals	36	1.15				117.5
i) Tablets	28	0.38	000 Nos.	302102	262313	115.2
ii) Liquids (Syrups & Drops)	27	0.48	000 Ltrs.	1864	1502	124.1
iii) Capsules	19	0.08	000 Nos.	48187	37999	126.8
iv) Injections	12	0.14	000 Nos.	14671	14110	104.0
v) Ointments	7	0.03	Kgs.	52119	51112	102.0
vi) Galenicals	6	0.04	000 Ltrs.	2	2	100.0
2 Basic Inorganic Chemicals/Acids	8	1.34		89544	107435	83.3
i) Caustic Soda	2		M.Tons	22111	24640	89.7
ii) Hydrochloric Acid	2		M.Tons	43960	39199	112.1
iii) Chlorine Liquids	2		M.Tons	1776	1702	104.3
iv) Soda Ash	2		M.Tons	19587	39007	50.2
v) Sulphuric Acid	5		M.Tons	2110	2887	73.1

Group/Items	No. of Units Covered in Jan: 2024	Weight with 2005-06 base	Unit of Quantity	Production		Index of Production in Jan: 2024 with Jan: 2023
				Jan: 2024	Jan: 2023	
3 Fertilizers	7	7.18	M.Tons	458181	403409	113.6
i) Urea	4		M.Tons	318002	272783	116.6
ii) Amm. Nitrate	1		M.Tons	74180	66038	112.3
iii) Amm. Sulphate	0		M.Tons	0	0	
iv) Super Phosphate	1		M.Tons	0	0	
v) Nitro Phosphate	1		M.Tons	65999	64588	102.2
4 Paints & Varnishes	12	0.65		11381	9710	117.2
i) Paints		0.01	M.Tons	7360	6924	106.3
			`000` Litres	3992	2757	144.8
ii) Varnishes		1.04	M.Tons	16	16	100.0
		0.26	`000` Litres	13	13	100.0
5 Tyres & Tubes	6	0.12	`000` Nos.	3392	3196	106.1
i) Cycle Tyres				360	321	112.1
ii) Automobile Tyres				476	429	111.0
iii) Cycle Tubes				562	593	94.8
iv) Automobile Tubes				1994	1853	107.6
6 Soap	62	0.07	M.Tons	21714	20670	105.1
i) Toilet Soap	7			3593	3241	110.9
ii) Washing Soap	62			18121	17429	104.0
7 Matches	2	0.00	M. Box * 40 Sticks	646	612	105.6
8 Synthetic Fibre	4	0.95	M.Tons	42510	42650	99.7
9 Petroleum Products	2	0.99	`000` Litres	559930	529878	105.7
i) Petrol (LPG)			`000` Litres	12578	12330	102.0
ii) J.P.			`000` Litres	46984	30513	154.0
iii) White Kerosene			`000` Litres	1860	2066	90.0
iv) H.S. Diesel			`000` Litres	215857	229505	94.1
v) Diesel Fuel			`000` Litres	0	0	
vi) Furnace Fuel			`000` Litres	107648	153742	70.0
vii) Solvent Oil			`000` Litres	0	0	
viii) Lubricating Oil			`000` Litres	0	0	
ix) Bitumen 80/100			`000` Litres	11713	9218	127.1
x) Blown Bitumen Products			`000` Litres	0	0	
xi) Premium M.G.			`000` Litres	163290	92504	176.5
xii) Naphtha			`000` Litres	0	0	
VII Non-Metalic & Mineral	21					
1 Glass Sheets	9	0.19	M.Tons	24321	24502	99.3
2 Cement	12	3.91	M.Tons	1563532	1917740	81.5
VIII Engineering Products	459					
1 Steel Bars/ Angles	41	1.06	M.Tons	22101	24089	91.7
2 Fabricated Metal Products/HMC	1	0.53	M.Tons	14	17	82.4
3 Tractors	4	0.86	Nos.	3917	739	530.0
4 Automobiles Cars/Trucks	1	1.65	Nos.	571	540	105.7
5 Diesel Engines	15	0.06	Nos.	126	161	78.3
6 Motor Cycles	17	0.13	Nos.	82164	98110	83.7
7 Bicycles	3	0.15	Nos.	13214	11799	112.0
8 Electric Fans	126	0.11	Nos.	148714	142010	104.7
i) Ceiling				86419	88188	98.0
ii) Pedestal				22416	20002	112.1
iii) Others				39879	33820	117.9
9 Electric Transformers	3	0.00	Nos.	1834	1801	101.8
10 Electric Motors	30	0.52	Nos.	1359	1502	90.5
11 Switch Gears	3	0.01	Nos.	909	807	112.6
12 Washing Machines	20	0.00	Nos.	31160	35002	89.0
13 Electric Meters	4	0.19	Nos.	186164	160999	115.6
14 Air-Conditioners	5	0.14	Nos.	3219	2160	149.0
15 Refrigerators/Deep Freezers	5	0.31	Nos.	28832	27920	103.3
16 Safety Razor Blades	1	0.14	Mill. Nos.	93	91	102.2
17 Agricultural Implements	151	0.38	Nos.	1269	1191	106.5
i) Chaff Cutter	54			720	645	111.6
ii) Sugarcane Machines	35			3	4	75.0
iii) Wheat Thrashers	30			54	19	284.2
iv) Others (Misc. Imp.)	43			492	523	94.1
18 Textiles Machinery	29	0.01		56	54	103.7
i) Power Looms	20		Nos.	52	50	104.0
ii) Bobbins	5		000 Nos.	0	0	
iii) Shuttles	6		000 Nos.	4	4	100.0
General Index	2041	72.14		223.6	229.3	97.5

Table 4:		Production Volume of Selected Items Pertaining to Large-Scale Manufacturing Sector, 2023-24 (Jul-Jan) VS 2022-23 (Jul-Jan)					
Group/Items		No. of Units Covered in Jan: 2024	Weight with 2005-06 base	Unit of Quantity	Production		Index of Production in 2023-24 (Jul-Jan) with 2022-23 (Jul-Jan)=100
					2023-24 (Jul-Jan)	2022-23 (Jul-Jan)	
I	Food Drinks & Tobacco	910					
1	Vegetable Ghee/Cooking Oil	44	5.00	M.Tons	712746	665649	107.1
	i) Vegetable Ghee	44		M.Tons	576912	542376	106.4
	ii) Cooking Oil	18		M.Tons	135834	123273	110.2
2	Dairy Products	8	4.13				78.2
	i) Process/UHT Milk		1.62	`000` Litres	285624	290753	98.2
	ii) Milk Powder		0.87	M.Tons	3449	7644	45.1
	iii) Chees		0.01	M.Tons	2216	4834	45.8
	iv) Butter/ Desi Ghee		0.33	M.Tons	2404	2455	97.9
	v) Cream		1.04	M.Tons	3880	4396	88.3
	vi) Yoghurt		0.26	M.Tons	0	0	
3	Wheat Milling	776	1.25	M.Tons	5592876	5744568	97.4
4	Sugar	44	3.77	M.Tons	2960871	2890674	102.4
5	Tea (Blended)	3	0.03	M.Tons	54576	51024	107.0
6	Starch & its Products	2	0.56	M.Tons	257195	252906	101.7
	i) Starch			M.Tons	158040	152837	103.4
	ii) Glucose			M.Tons	99155	100069	99.1
7	Soft Drinks & Juices	30	0.82	`000` Litres	1184991	1303949	90.9
	i) 7-up Coca Cola etc.	17		`000` Litres	1063169	1166279	91.2
	ii) Fruit Juices	16		`000` Litres	107522	122719	87.6
	iii) Syrups & Squashes	2		`000` Litres	14300	13497	105.9
8	Cigarettes	3	0.59	M. Nos	6476	9905	65.4
II	Textiles	312					
1	Cotton Textiles	285					
	i) Cotton/M. M Blended Yarn	247	15.40	M.Tons	867597	953309	91.0
	ii) Cloth/M. M Blended Cloth	48	10.20	000 Mtrs.	405504	456172	88.9
2	Woolen Textiles	21	0.52	M.Tons	4754	4628	102.7
	i) Woolen Yarn	14		M.Tons	4600	4521	101.7
	ii) Knitting Wool			M.Tons	0	0	
	iii) Woolen & Worsted Cloth	14		M.Tons	154	111	138.7
	iv) Carpets	5	0.77	000 Mtrs.	0	0	
3	Jute Textiles	6	0.28	M.Tons	32554	30906	105.3
	i) Jute Sacking				21895	20504	106.8
	ii) Jute Hessian				7562	7753	97.5
	iii) Jute Twine				3097	2649	116.9
III	Leather Rubber & Plastic Products	147					
1	Leather Tanning	106					
	i) Upper Leather	95	0.49	000 Sq. Mtrs.	5309	5817	91.3
	ii) Sole Leather	11		M.Tons	114	112	101.8
2	Footwear	41	0.90	000 Pairs	20047	18738	107.0
IV	Ply Wood	6	0.44	000 Sq. Feet	4268	3866	110.4
V	Paper & Paper Board	47	4.19	M.Tons	389950	405117	96.3
1	Paper				145349	136123	106.8
	i) Writing			M.Tons	63482	56574	112.2
	ii) Printing			M.Tons	39818	42156	94.5
	iii) Packing & Others			M.Tons	42049	37393	112.5
2	Paper Board			M.Tons	244601	268994	90.9
VI	Chemical & Petroleum Products	139					
1	Pharmaceuticals	36	1.15				113.6
	i) Tablets	28	0.38	000 Nos.	2040099	1832034	111.4
	ii) Liquids (Syrups & Drops)	27	0.48	000 Ltrs.	13149	10381	126.7
	iii) Capsules	19	0.08	000 Nos.	333595	306411	108.9
	iv) Injections	12	0.14	000 Nos.	104001	114172	91.1
	v) Ointments	7	0.03	Kgs.	366760	386971	94.8
	vi) Galenicals	6	0.04	000 Ltrs.	17	21	81.0
2	Basic Inorganic Chemicals/Acids	8	1.34		650707	798805	81.5
	i) Caustic Soda	2		M.Tons	155504	161629	96.2
	ii) Hydrochloric Acid	2		M.Tons	297851	301228	98.9
	iii) Chlorine Liquids	2		M.Tons	10320	12372	83.4
	iv) Soda Ash	2		M.Tons	169498	304388	55.7
	v) Sulphuric Acid	5		M.Tons	17534	19188	91.4

Group/Items	No. of Units Covered in Jan: 2024	Weight with 2005-06 base	Unit of Quantity	Production		Index of Production in 2023-24 (Jul-Jan) with 2022-23 (Jul-Jan)=100
				2023-24 (Jul-Jan)	2022-23 (Jul-Jan)	
3 Fertilizers	7	7.18	M.Tons	3121752	2929351	106.6
i) Urea	4		M.Tons	2143639	1922291	111.5
ii) Amm. Nitrate	1		M.Tons	517403	498121	103.9
iii) Amm. Sulphate	0		M.Tons	0	0	
iv) Super Phosphate	1		M.Tons	0	6884	
v) Nitro Phosphate	1		M.Tons	460710	502055	91.8
4 Paints & Varnishes	12	0.65		72654	68235	106.5
i) Paints		0.01	M.Tons	50443	48895	103.2
			`000` Litres	22008	19137	115.0
ii) Varnishes		1.04	M.Tons	112	112	100.0
		0.26	`000` Litres	91	91	100.0
5 Tyres & Tubes	6	0.12	`000` Nos.	23011	22457	102.5
i) Cycle Tyres				2446	2310	105.9
ii) Automobile Tyres				3228	3006	107.4
iii) Cycle Tubes				3939	4229	93.1
iv) Automobile Tubes				13398	12912	103.8
6 Soap	62	0.07	M.Tons	144961	151508	95.7
i) Toilet Soap	7			23688	23701	99.9
ii) Washing Soap	62			121273	127807	94.9
7 Matches	2	0.00	M. Box * 40 Sticks	4421	3807	116.1
8 Synthetic Fibre	4	0.95	M.Tons	303548	314307	96.6
9 Petroleum Products	2	0.99	`000` Litres	4023432	3620140	111.1
i) Petrol (LPG)			`000` Litres	93844	94018	99.8
ii) J.P.			`000` Litres	303725	231070	131.4
iii) White Kerosene			`000` Litres	16581	47120	35.2
iv) H.S. Diesel			`000` Litres	1600956	1346728	118.9
v) Diesel Fuel			`000` Litres	0	4517	
vi) Furnace Fuel			`000` Litres	755479	896942	84.2
vii) Solvent Oil			`000` Litres	0	0	
viii) Lubricating Oil			`000` Litres	0	0	
ix) Bitumen 80/100			`000` Litres	70482	54304	129.8
x) Blown Bitumen Products			`000` Litres	0	0	
xi) Premium M.G.			`000` Litres	1182365	945441	125.1
xii) Naphtha			`000` Litres	0	0	
VII Non-Metalic & Mineral	21					
1 Glass Sheets	9	0.19	M.Tons	178560	164436	108.6
2 Cement	12	3.91	M.Tons	12211951	13193250	92.6
VIII Engineering Products	459					
1 Steel Bars/ Angles	41	1.06	M.Tons	155059	172884	89.7
2 Fabricated Metal Products/HMC	1	0.53	M.Tons	100	225	44.4
3 Tractors	4	0.86	Nos.	22563	15737	143.4
4 Automobiles Cars/Trucks	1	1.65	Nos.	3732	5415	68.9
5 Diesel Engines	15	0.06	Nos.	925	1369	67.6
6 Motor Cycles	17	0.13	Nos.	611211	760971	80.3
7 Bicycles	3	0.15	Nos.	90752	87137	104.1
8 Electric Fans	126	0.11	Nos.	1203116	1245712	96.6
i) Ceiling				714788	727885	98.2
ii) Pedestal				170644	209120	81.6
iii) Others				317684	308707	102.9
9 Electric Transformers	3	0.00	Nos.	13779	21463	64.2
10 Electric Motors	30	0.52	Nos.	9651	11432	84.4
11 Switch Gears	3	0.01	Nos.	5870	6794	86.4
12 Washing Machines	20	0.00	Nos.	215570	243602	88.5
13 Electric Meters	4	0.19	Nos.	1263914	1225819	103.1
14 Air-Conditioners	5	0.14	Nos.	41720	65958	63.3
15 Refrigerators/Deep Freezers	5	0.31	Nos.	226771	269378	84.2
16 Safety Razor Blades	1	0.14	Mill. Nos.	647	614	105.4
17 Agricultural Implements	151	0.38	Nos.	8891	8217	108.2
i) Chaff Cutter	54			4940	4966	99.5
ii) Sugarcane Machines	35			18	27	66.7
iii) Wheat Thrashers	30			398	27	1474.1
iv) Others (Misc. Imp.)	43			3535	3197	110.6
18 Textiles Machinery	29	0.01		391	319	122.6
i) Power Looms	20		Nos.	364	292	124.7
ii) Bobbins	5		000 Nos.	0	0	
iii) Shuttles	6		000 Nos.	27	28	96.4
General Index*	2041	72.14		175.1	183.0	95.7

* Average Index over seven months.

Table 5: Total Employment Regarding Large-Scale Industries, December -2023, January-2024 and January-2023

Groups/Items		No. of Units Covered in Jan: 2024	Dec: 2023	Jan: 2024	Jan: 2023	Index of Employment	
						Jan: 2024 with Dec: 2023	Jan: 2024 with Jan: 2023
I	Food Drinks & Tobacco	910					
1	Vegetable Ghee/Cooking Oil	44	5816	5817	5839	100.0	99.6
2	Dairy Products	8	2121	2120	2091	100.0	101.4
3	Wheat Milling	776	9705	9754	9963	100.5	97.9
4	Sugar	44	25277	36381	28471	143.9	127.8
5	Tea (Blended)	3	1355	1356	1370	100.1	99.0
6	Starch & its Products	2	1805	1810	1839	100.3	98.4
7	Soft Drinks & Juices	30	7962	7966	8070	100.1	98.7
8	Cigarettes	3	583	583	648	100.0	90.0
II	Textiles	313					
1	Cotton Textiles	285	145389	145471	147853	100.1	98.4
2	Woolen Textiles	21	915	918	939	100.3	97.8
3	Jute Textiles	7	4771	4778	4898	100.1	97.6
III	Leather Rubber & Plastic Products	147					
1	Leather Tanning	106	2324	2326	2225	100.1	104.5
2	Footwear	41	12690	12693	12440	100.0	102.0
IV	Plywood	6	88	88	86	100.0	102.3
V	Paper & Paper Board	47					
1	Paper & Paper Board	47	5107	5112	5099	100.1	100.3
VI	Chemicals & Petroleum Products	139					
1	Pharmaceuticals	36	8066	8070	8040	100.0	100.4
2	Basic Inorganic Chemicals	8	2229	2230	2194	100.0	101.6
3	Fertilizers	7	5502	5507	5434	100.1	101.3
4	Paints & Varnishes	12	2387	2388	2372	100.0	100.7
5	Tyres & Tubes	6	1374	1374	1326	100.0	103.6
6	Soap	62	3018	3018	2975	100.0	101.4
7	Matches	2	510	512	500	100.4	102.4
8	Synthetic Fibre	4	1763	1765	1776	100.1	99.4
9	Petroleum Products	2	1013	1013	971	100.0	104.3
VII	Non-Metalic & Mineral Products	21					
1	Glass Sheets	9	1079	1079	1155	100.0	93.4
2	Cement	12	7278	7428	7412	102.1	100.2
VIII	Engineering Products	458					
1	Steel Bars/ Angles	40	1081	1082	1093	100.1	99.0
2	Fabricated Metal Products/HMC	1	16	16	16	100.0	100.0
3	Tractors	4	460	460	440	100.0	104.5
4	Automobile Cars/Trucks	1	693	695	700	100.3	99.3
5	Diesel Engines	15	24	24	24	100.0	100.0
6	Motor Cycles	17	3215	3217	3220	100.1	99.9
7	Bicycles	3	686	686	686	100.0	100.0
8	Electric Fans	126	2120	2110	2000	99.5	105.5
9	Electric Transformers	3	2680	2680	2680	100.0	100.0
10	Electric Motors	30	161	160	170	99.4	94.1
11	Electric Meters	4	1200	1200	1200	100.0	100.0
12	Switch Gears	3	12	12	12	100.0	100.0
13	Washing Machines	20	267	266	267	99.6	99.6
15	Air-Conditioners/Refrigerators/Deep Fre	10	2153	2153	2153	100.0	100.0
16	Safety Razor Blades	1	691	691	705	100.0	98.0
17	Agricultural Implements	151	498	498	471	100.0	105.7
18	Textiles Machinery	29	70	70	74	100.0	94.6
Total		2041	276154	287577	281897	104.1	102.0

Table 6: Total Number of Production Workers Regarding Large-Scale Industries, December-2023, January-2024 and January-2023

Groups/Items	No. of Units Covered in Jan: 2024	Dec: 2023	Jan: 2024	Jan: 2023	Index of Employment	
					Dec: 2023 with Jan: 2024	Dec: 2023 with Jan: 2023
I Food Drinks & Tobacco	910					
1 Vegetable Ghee/Cooking Oil	44	3695	3696	3644	100.0	101.4
2 Dairy Products	8	1385	1390	1332	100.4	104.4
3 Wheat Milling	776	5960	5987	6067	100.5	98.7
4 Sugar	44	28471	28982	25351	101.8	114.3
5 Tea (Blended)	3	1002	1003	1055	100.1	95.1
6 Starch & its Products	2	1604	1606	1690	100.1	95.0
7 Soft Drinks & Juices	30	4136	4157	4102	100.5	101.3
8 Cigarettes	3	324	324	451	100.0	71.8
II Textiles	313					
1 Cotton Textiles	285	122650	122649	124076	100.0	98.8
2 Woolen Textiles	21	718	718	732	100.0	98.1
3 Jute Textiles	7	4410	4413	4490	100.1	98.3
III Leather Rubber & Plastic Products	147					
1 Leather Tanning	106	1650	1652	1613	100.1	102.4
2 Footwear	41	9375	9378	9326	100.0	100.6
IV Plywood	6	73	73	70	100.0	104.3
V Paper & Paper Board	47					
1 Paper & Paper Board	47	3680	3697	3647	100.5	101.4
VI Chemicals & Petroleum Products	139					
1 Pharmaceuticals	36	3302	3270	3268	99.0	100.1
2 Basic Inorganic Chemicals	8	1382	1384	1375	100.1	100.7
3 Fertilizers	7	3433	3437	3415	100.1	100.6
4 Paints & Varnishes	12	1394	1395	1332	100.1	104.7
5 Tyres & Tubes	6	1062	1062	1040	100.0	102.1
6 Soap	62	2430	2431	2313	100.0	105.1
7 Matches	2	470	471	460	100.2	102.4
8 Synthetic Fibre	4	1471	1473	1472	100.1	100.1
9 Petroleum Products	2	580	580	506	100.0	114.6
VII Non-Metallic & Mineral Products	21					
1 Glass Sheets	9	802	802	840	100.0	95.5
2 Cement	12	4325	4423	4417	102.3	100.1
VIII Engineering Products	458					
1 Steel Bars/ Angles	40	772	773	804	100.1	96.1
2 Fabricated Metal Products/HMC	1	11	11	11	100.0	100.0
3 Tractors	4	328	329	320	100.3	102.8
4 Automobile Cars/Trucks	1	464	465	470	100.2	98.9
5 Diesel Engines	15	16	16	16	100.0	100.0
6 Motor Cycles	17	2400	2400	2404	100.0	99.8
7 Bicycles	3	527	527	527	100.0	100.0
8 Electric Fans	126	1692	1694	1770	100.1	95.7
9 Electric Transformers	3	1980	1980	1980	100.0	100.0
10 Electric Motors	30	135	134	142	99.3	94.4
11 Electric Meters	4	955	955	955	100.0	100.0
12 Switch Gears	3	10	10	10	100.0	100.0
13 Washing Machines	20	189	190	194	100.5	97.9
15 Air-Conditioners/Refrigerators/Deep Fre	10	1845	1845	1845	100.0	100.0
16 Safety Razor Blades	1	549	549	555	100.0	98.9
17 Agricultural Implements	151	358	358	385	100.0	93.0
18 Textiles Machinery	29	60	60	62	100.0	96.8
Total	2041	222075	222749	220534	100.3	101.0

Table 7: Average Monthly Total Employment Regarding Large-Scale Industries, 2023-24 (Jul-Jan): VS 2022-23 (Jul-Jan):

Groups/Items		No. of Units Covered in Jan: 2024	2023-24 (Jul-Jan):	2022-23 (Jul-Jan):	2023-24 (Jul-Jan) with 2022-23(Jul-Jan):
I	Food Drinks & Tobacco	910			
1	Vegetable Ghee/Cooking Oil	44	5819	5526	105.3
2	Dairy Products	8	2120	2027	104.6
3	Wheat Milling	776	9797	10065	97.3
4	Sugar	44	26773	26119	102.5
5	Tea (Blended)	3	1362	1357	100.4
6	Starch & its Products	2	1820	1841	98.9
7	Soft Drinks & Juices	30	8078	8199	98.5
8	Cigarettes	3	585	642	91.1
II	Textiles	313			
1	Cotton Textiles	285	144999	155173	93.4
2	Woolen Textiles	21	910	920	98.9
3	Jute Textiles	7	4752	5043	94.2
III	Leather Rubber & Plastic Products	147			
1	Leather Tanning	106	2308	2226	103.7
2	Footwear	41	12577	12395	101.5
IV	Plywood	6	88	87	101.1
V	Paper & Paper Board	47			
1	Paper & Paper Board	47	5151	5093	101.1
VI	Chemicals & Petroleum Products	139			
1	Pharmaceuticals	36	8052	8060	99.9
2	Basic Inorganic Chemicals	8	2219	2214	100.2
3	Fertilizers	7	5445	5536	98.4
4	Paints & Varnishes	12	2379	2352	101.1
5	Tyres & Tubes	6	1364	1334	102.3
6	Soap	62	3005	2874	104.6
7	Matches	2	503	495	101.8
8	Synthetic Fibre	4	1769	1776	99.6
9	Petroleum Products	2	1011	968	104.4
VII	Non-Metallic & Mineral Products	21			
1	Glass Sheets	9	1117	1149	97.2
2	Cement	12	7296	7444	98.0
VIII	Engineering Products	458			
1	Steel Bars/ Angles	40	1081	1091	99.1
2	Fabricated Metal Products/HMC	1	16	16	100.0
3	Tractors	4	457	475	96.3
4	Automobile Cars/Trucks	1	692	879	78.8
5	Diesel Engines	15	24	24	100.0
6	Motor Cycles	17	3203	3275	97.8
7	Bicycles	3	686	686	100.0
8	Electric Fans	126	2125	2113	100.5
9	Electric Transformers	3	2680	2680	100.0
10	Electric Motors	30	162	182	89.0
11	Electric Meters	4	1200	1200	100.0
12	Switch Gears	3	12	12	100.0
13	Washing Machines	20	266	275	96.9
15	Air-Conditioners/Refrigerators/Deep Freezer:	10	2153	2153	100.0
16	Safety Razor Blades	1	692	732	94.6
17	Agricultural Implements	151	515	421	122.3
18	Textiles Machinery	29	70	76	92.5
Total		2041	277335	287204	96.6

Table 8: Average Monthly Number of Production Workers Regarding Large-Scale Industries, 2023-24 (Jul-Jan): VS 2022-23 (Jul-Jan):

Groups/Items		No. of Units Covered in Jan: 2024	2023-24 (Jul-Jan):	2022-23 (Jul-Jan):	2023-24 (Jul-Jan) with 2022-23(Jul-Jan):
I	Food Drinks & Tobacco	910			
1	Vegetable Ghee/Cooking Oil	44	3701	3363	110.1
2	Dairy Products	8	1382	1279	108.1
3	Wheat Milling	776	6009	6087	98.7
4	Sugar	44	19077	16680	114.4
5	Tea (Blended)	3	1024	1044	98.1
6	Starch & its Products	2	1639	1694	96.7
7	Soft Drinks & Juices	30	4226	4247	99.5
8	Cigarettes	3	336	438	76.6
II	Textiles	313			
1	Cotton Textiles	285	122106	129942	94.0
2	Woolen Textiles	21	711	724	98.2
3	Jute Textiles	7	4375	4613	94.8
III	Leather Rubber & Plastic Products	147			
1	Leather Tanning	106	1631	1624	100.4
2	Footwear	41	9357	9386	99.7
IV	Plywood	6	73	71	102.8
V	Paper & Paper Board	47			
1	Paper & Paper Board	47	3710	3631	102.2
VI	Chemicals & Petroleum Products	139			
1	Pharmaceuticals	36	3300	3302	99.9
2	Basic Inorganic Chemicals	8	1374	1383	99.3
3	Fertilizers	7	3422	3599	95.1
4	Paints & Varnishes	12	1387	1243	111.6
5	Tyres & Tubes	6	1055	1046	100.9
6	Soap	62	2415	2273	106.3
7	Matches	2	463	448	103.5
8	Synthetic Fibre	4	1472	1472	100.0
9	Petroleum Products	2	577	488	118.3
VII	Non-Metalic & Mineral Products	21			
1	Glass Sheets	9	827	834	99.2
2	Cement	12	4366	4555	95.8
VIII	Engineering Products	458			
1	Steel Bars/ Angles	40	780	795	98.1
2	Fabricated Metal Products/HMC	1	11	11	100.0
3	Tractors	4	325	344	94.5
4	Automobile Cars/Trucks	1	463	589	78.6
5	Diesel Engines	15	16	16	100.0
6	Motor Cycles	17	2403	2450	98.1
7	Bicycles	3	527	527	100.0
8	Electric Fans	126	1717	1839	93.4
9	Electric Transformers	3	1980	1980	100.0
10	Electric Motors	30	136	149	91.6
11	Electric Meters	4	955	955	100.0
12	Switch Gears	3	10	10	100.0
13	Washing Machines	20	189	204	92.9
15	Air-Conditioners/Refrigerators/Deep Freezer:	10	1845	1845	100.0
16	Safety Razor Blades	1	548	577	95.1
17	Agricultural Implements	151	355	340	104.6
18	Textiles Machinery	29	60	65	92.3
Total		2041	212335	218161	97.3

PERFORMANCE OF COTTON TEXTILE INDUSTRY

Report for the month of January 2024

Coverage

This report covers Two Hundred & Eighty Five (285) Cotton Textiles Mills, Producing yarn and cloth.

Spindles/Rotors/Looms	Installed	Average Worked	% Utilization
Spindles	8287614	6287478	75.9%
Rotors	53966	35778	66.3%
Looms	8187	6081	74.3%

MANUFACTURING ACTIVITY (JANUARY 2024)

Production, Consumption and Stock of Cotton Bales

Textile mills purchased 946869 Bales of Cotton during the month, which was 2.9% lower than the last month. These mills consumed 848014 of Cotton Bales to manufacture Yarn that is 1.2% lower than the last month. The stock of Cotton Bales at the end of the month was 4586109 Bales.

Production, Consumption and Sale of Cotton Yarn

The production of Cotton Yarn during the month was 81970 thousand kgs. Which is 1.2% higher than the last month. The mills consumed 12009 thousand kgs. Of Cotton Yarn to manufacture Cotton Cloth, during the month, 78550 thousand kgs. Of Cotton Yarn was sold by the textile mills which was 0.3% lower than the December 2023. The Export of Cotton Yarn during the month was 11504 thousand kgs. Which was 0.9% lower than the last month.

Production and Sale of Cotton Cloth

The production of Cotton Cloth during the month was 51292 thousand Metres. Which is 0.4% higher than the last month, 68622 thousand Metres. Of Cotton Cloth was sold, out of which 14947 thousand Metres was exported by the Textile Mills during the month which was 0.6% lower than last month.

Production of Man Made/Blended Yarn and Cloth

The production of Man Made/Blended Yarn was 43594 thousand kgs. which is 0.4% higher than the last month. The production of Man Made/Blended Cloth was 6700 thousand Mtrs. which is 1.3% lower than the last month.

Employment and Wages/Salaries

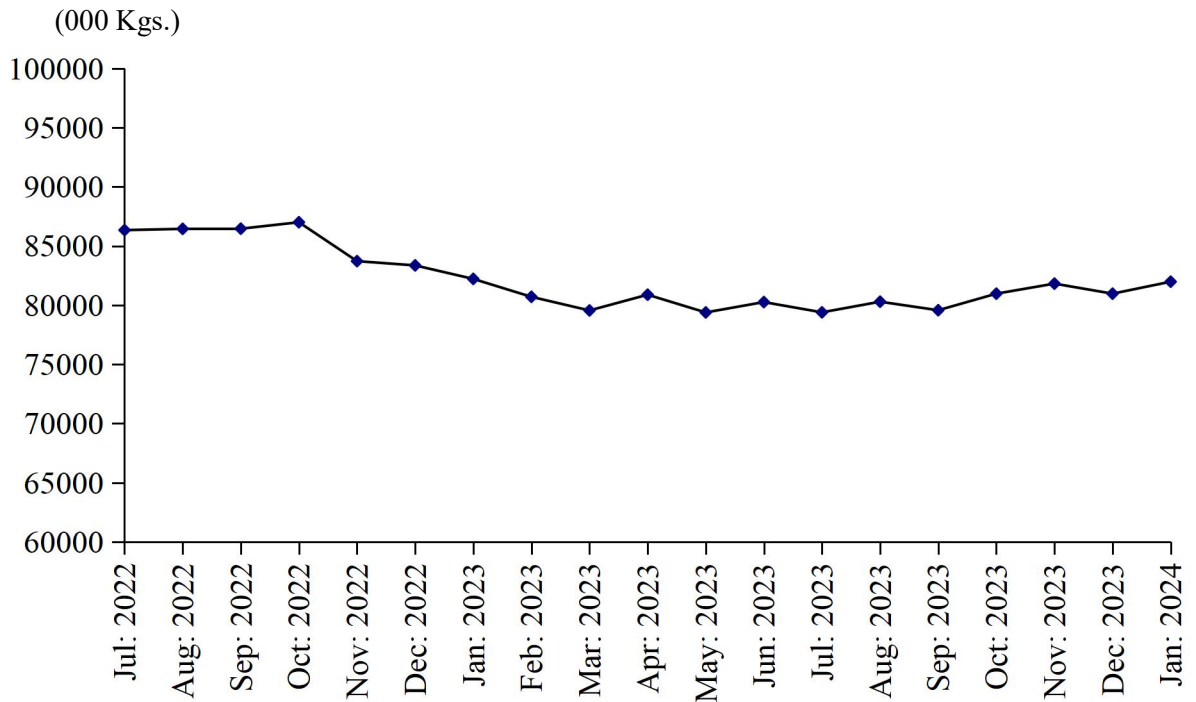
Total employment during the month was 145657 Out of this total employment, 122435 were production workers. Total wages/salaries for the month amounted to 3337.2 Million Rupees.

Production of Man Made/Blended Yarn and Cloth (Since July 2023)

Month/Year	Man Made / Blended Yarn (000 Kgs.)		Man Made / Blended Cloth (000.Mtrs.)	
	2022-23	2023-24	2022-23	2023-24
<u>July- Jan:</u>	<u>357801</u>	<u>301666</u>	<u>62085</u>	<u>47844</u>
July	52124	42910	9635	6851
August	51864	43270	9480	6940
September	51960	42685	9065	6876
October	52978	43399	9080	6888
November	51399	42399	8671	6800
December	51099	43409 (R)	8639	6789
January	46377	43594	7515	6700
February	45812		7449	
March	44518		7348	
April	44343		6944	
May	43218		6856	
June	43707		6876	

PRODUCTION OF COTTON YARN

July 2022 to January 2024



PRODUCTION OF COTTON CLOTH

July 2022 to January 2024

(000 Linear Mtrs.)

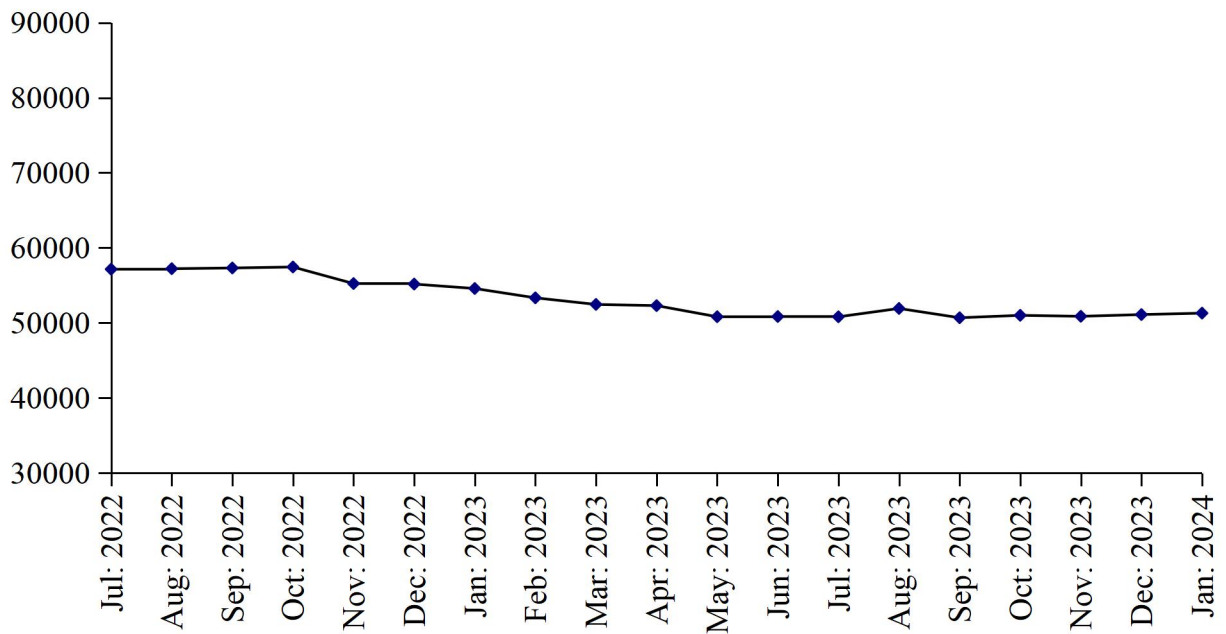


TABLE 10: DETAIL OF THE PURCHASE, SALE, CONSUMPTION AND STOCK OF COTTON BALES.

(one Bale = 170 Kg)

Year (July-June)/ Month	No. Of Reporting Mills	Purchase	Sale	Consumed for Spinning	Stock at the end of Year/Month
2007-08	268	8457435	451365	7987689	1978115
2008-09	268	7284896	483579	7100353	1679079
2009-10	268	8143340	505951	7889680	1426788
2010-11	274	8801855	484794	8596317	1147532
2011-12	274	8025974	387146	7286551	1499809
2012-13	277	8618084	326690	7863746	1927457
2013-14	277	8301002	434565	7838753	1955141
2014-15	277	8281619	550118	7819131	1867511
2015-16	290	7263140	330272	7085902	1714477
2016-17	290	8271104	587127	7802375	1596079
2017-18	299	8157127	412752	7459759	1880695
2018-19	299	8156763	448409	7552656	2036393
2019-20	299	6953009	399666	6319497	2270239
2020-21	285	8478928	314792	7320669	3113706
2021-22	285	11846884	1594595	9431481	3934514
2022-23	285	11142140	247639	10794841	4034174
(Jul: – Jan:)	<u>285</u>	<u>6721606</u>	<u>136854</u>	<u>6271885</u>	<u>4247381</u>
Jul:	285	820550	5941	887827	3861296
Aug:	285	832204	6141	886409	3800950
Sep:	285	832004	6044	866238	3760672
Oct:	285	1224446	20334	912256	4052528
Nov:	285	1153844	51368	904283	4250721
Dec:	285	992031	9189	921049	4312514
Jan:	285	866527	37837	893823	4247381
Feb:	285	941554	29648	889218	4270069
Mar:	285	871927	27947	900564	4213485
Apr:	285	823512	21055	900460	4115482
May	285	891087	23080	929039	4054450
June	285	892454	9055	903675	4034174
<u>2023-24</u>					
(Jul: – Jan:)	<u>285</u>	<u>6781033</u>	<u>47138</u>	<u>6181960</u>	<u>4586109</u>
Jul:	285	891087	8169	875325	4041767
Aug:	285	992290	6570	869758	4157729
Sep:	285	992300	6590	870629	4272810
Oct:	285	988300	6531	879843	4374736
Nov:	285	995428	6653	979810	4383701
Dec:	285	974759	6904	858581	4492975
Jan:	285	946869	5721	848014	4586109

TABLE 11: PRODUCTION, PURCHASE, CONSUMPTION, SALE AND STOCK OF COTTON YARN

Year (July-June)/ Month	No. of Reporting Mills	Production	Purchase	Consumed	SALE			Stock at the end of Year/ Month
					Total	Within Country	Exported	
2007-08	263	869531	182463	185558	853110	626939	226171	49969
2008-09	263	744478	138920	150092	736453	562275	174178	46822
2009-10	263	824100	93550	108458	809044	646616	162428	46970
2010-11	263	861278	86884	107441	843590	672067	171523	44101
2011-12	263	807305	83157	76949	824281	661528	162753	33333
2012-13	274	892200	116081	106323	898240	651670	246570	37051
2013-14	274	939965	129796	132378	931890	720629	211561	42544
2014-15	289	982172	132904	139454	974797	750512	224285	43369
2015-16	292	987258	139201	162386	962945	753246	209699	44497
2016-17	290	1063645	143722	153715	1056034	857310	198724	42115
2017-18	247	1082179	191064	179554	1090682	857987	232695	45122
2018-19	247	1075008	186447	178128	1082390	888248	194132	46059
2019-20	247	976627	221511	180109	997528	812952	184576	66560
2020-21	247	998181	342664	169862	1182999	991173	191826	54544
2021-22	247	1006783	252995	215857	1033312	843488	189824	65153
2022-23	247	996268	204535	194104	966807	819302	147505	105045
(Jul: – Jan:)	247	595508	125683	125624	586531	495295	91236	74189
Jul:	247	86335	17915	18646	83465	68391	15074	67292
Aug:	247	86440	18309	18613	83078	68133	14945	70350
Sep:	247	86455	18194	18498	82345	67956	14389	74156
Oct:	247	86998	22361	20963	90334	81469	8865	72218
Nov:	247	83714	14233	16093	81358	70434	10924	72714
Dec:	247	83353	20261	16310	80147	67481	12666	79871
Jan:	247	82213	14410	16501	85804	71431	14373	74189
Feb:	247	80699	13903	15866	78162	64547	13615	74763
Mar:	247	79548	13894	14385	76427	63867	12560	77393
Apr:	247	80878	17005	12703	75030	65310	9720	87543
May	247	79380	17045	12613	75668	65994	9674	95687
Jun:	247	80255	17005	12913	74989	64289	10700	105045
2023-24								
(Jul: – Jan:)	247	564961	118743	87937	558200	475216	82984	142612
July	247	79388	16900	12613	74175	63375	10800	114545
Aug:	247	80286	17128	12820	75414	64584	10830	123725
Sep:	247	79566	17126	12671	82881	70238	12643	124865
Oct:	247	80965	17026	12804	82132	70370	11762	127920
Nov:	247	81814	17111	12711	86256	72415	13841	127878
Dec:	247	80965	17026	12309	78792	67188	11604	134768
Jan:	247	81977	16426	12009	78550	67046	11504	142612

TABLE 12: PRODUCTION, PURCHASE, SALE AND STOCK OF COTTON CLOTH.

(000 Mtrs.)

Year (July-June)/ Month	No. Of Reporting Mills	Production	Purchased	SALE			Stock at the end of Year/ Month
				Total	Within Country	Exported	
2007-08	52	401275	22913	410559	245425	165134	69914
2008-09	52	350406	52966	397698	207800	189898	75588
2009-10	52	369035	62330	438802	258870	179932	68151
2010-11	53	377058	27814	411759	273413	138346	61264
2011-12	53	324906	26410	354262	245679	108583	58318
2012-13	56	337955	39613	384441	227950	156491	51445
2013-14	56	414827	44459	454427	230989	223438	56304
2014-15	57	468206	33332	500905	297034	203871	56937
2015-16	57	522412	18246	542268	325894	216374	55327
2016-17	58	670884	42791	703647	431374	272273	65355
2017-18	39	703513	44908	749157	439486	309671	64619
2018-19	39	697096	38577	751178	456319	294859	49114
2019-20	39	650317	30785	658561	455655	202906	75042
2020-21	38	644439	48331	702494	513618	188876	65318
2021-22	38	690956	48439	728202	512555	215647	76511
2022-23	38	653813	166284	804749	633760	170989	91859
(Jul: – Jan:)	38	394087	77298	449062	348576	100486	98834
Jul:	38	57145	1756	54757	40640	14117	80655
Aug:	38	57215	1826	54897	40710	14187	84799
Sep:	38	57310	1928	55094	40807	14287	88943
Oct:	38	57442	18886	67030	50674	16356	98241
Nov:	38	55235	17725	71249	56048	15201	99952
Dec:	38	55165	17125	72514	60078	12436	99728
Jan:	38	54575	18052	73521	59619	13902	98834
Feb:	38	53332	17072	71385	58141	13244	97853
Mar:	38	52452	18204	75331	59737	15594	93178
Apr:	38	52292	18304	71490	57080	14410	92284
May:	38	50811	18204	69909	55599	14310	91390
Jun:	38	50839	17202	67572	54627	12945	91859
<u>2023-24</u>							
(Jul: – Jan:)	38	357660	126535	482210	386247	95963	93844
Jul:	38	50804	18204	68539	55592	12947	92328
Aug:	38	51916	18404	69671	56704	12967	92977
Sep:	38	50678	18204	67929	54982	12947	93930
Oct:	38	50999	18104	69167	55220	13947	93866
Nov:	38	50871	18211	69278	55017	14261	93670
Dec:	38	51100 (R)	18104	69004	55057	13947	93870
Jan:	38	51292	17304	68622	53675	14947	93844

TABLE 13: EMPLOYMENT AND WAGES/SALARIES

Year (July-June)/ Month	No. Of Reporting Mills	E M P L O Y M E N T (Nos.)*			WAGES/SALARIES (000 Rs.)		
		Total	Production Workers	Office Staff	Total	Production Workers	Office Staff
2007-08	288	176643	152036	24607	842722	661182	181540
2008-09	288	162984	139152	23832	802438	629608	172830
2009-10	288	168727	144487	24240	944137	750701	193436
2010-11	295	166718	142756	23962	1149580	893633	255947
2011-12	295	163535	140315	23220	1171743	926744	245002
2012-13	280	169697	144411	25286	1323153	1043134	280586
2013-14	281	172129	144216	27913	1627528	1286234	341294
2014-15	289	170528	143048	27480	1734882	1372957	361925
2015-16	289	164049	135777	28272	1925533	1497525	423209
2016-17	298	165251	133259	31992	2069106	1599857	469249
2017-18	299	161727	133190	28537	2251084	1756455	494629
2018-19	299	157846	131085	26761	2438412	1891246	247166
2019-20	299	151851	126203	25648	2499773	1973563	526210
2020-21	285	154706	129886	24820	2816361	2213454	602907
2021-22	285	157343	132207	25136	3146792	2425150	721642
2022-23	285	150922	126438	24484	3307707	2550426	757281
(Jul: – Jan:)	285	155173	129942	25231	3285860	2522782	763078
Jul:	285	159734	133921	25813	3312202	2537499	774703
Aug:	285	159579	133766	25813	3246751	2467880	778871
Sep:	285	159251	133635	25616	3231165	2457355	773810
Oct:	285	159311	133665	25646	3334720	2570476	764244
Nov:	285	150546	125553	24993	3201749	2470765	730984
Dec:	285	149936	124976	24960	3342458	2577991	764467
Jan:	285	147853	124076	23777	3331972	2577507	754465
Feb	285	147305	123555	23750	3331919	2580691	751228
Mar:	285	144508	120555	23953	3321011	2571512	749499
Apr:	285	144580	121186	23394	3373814	2614747	759067
May	285	143780	120886	22894	3332210	2589146	743064
Jun	285	144675	121481	23194	3332509	2589546	742963
2023-24							
(Jul: – Jan:)	285	145076	121943	23133	3335487	2595941	739546
Jul:	285	143780	120886	22894	3332210	2589146	743064
Aug:	285	144155	121036	23119	3334120	2590137	743983
Sep:	285	145255	122036	23219	3336181	2598182	737999
Oct:	285	145557	122238	23319	3336063	2598282	737781
Nov:	285	145571	122731	22840	3336611	2598372	738239
Dec:	285	145557	122238	23319	3336063	2598282	737781
Jan:	285	145657	122435	23222	3337164	2599183	737981

* = Monthly averages over the seven months.

PERFORMANCE OF WOOLLEN TEXTILE INDUSTRY

Report for the month of January 2024

Coverage

This report covers Twenty Six (21) Woollen Textile Mills of the Punjab.

Production

The Woollen Textile Mills Produced 678 thousand Kgs. of Woollen Yarn, and nil production of Knitting Wool during the month of January 2024. The production of Woollen Yarn was 0.6% higher than the last month and Knitting Wool was 100% higher than the last month respectively.

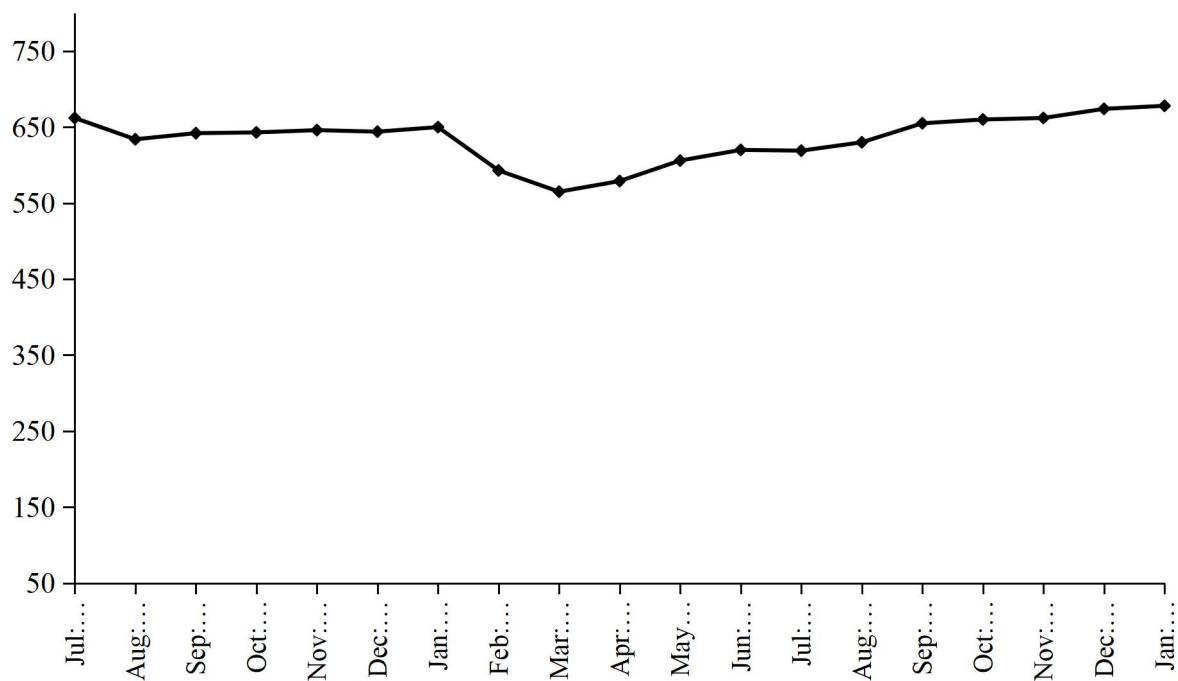
Employment

Total employment in Woollen Textile Mills during the month was 912 which was is 0.3% lower than the last month. Out of this total employment, 718 were production workers.

PRODUCTION OF WOOLEN YARN

July 2022 to January 2024

(000 Kg.)



PRODUCTION OF WOOLLEN WORSTED CLOTH

July 2022 to January 2024

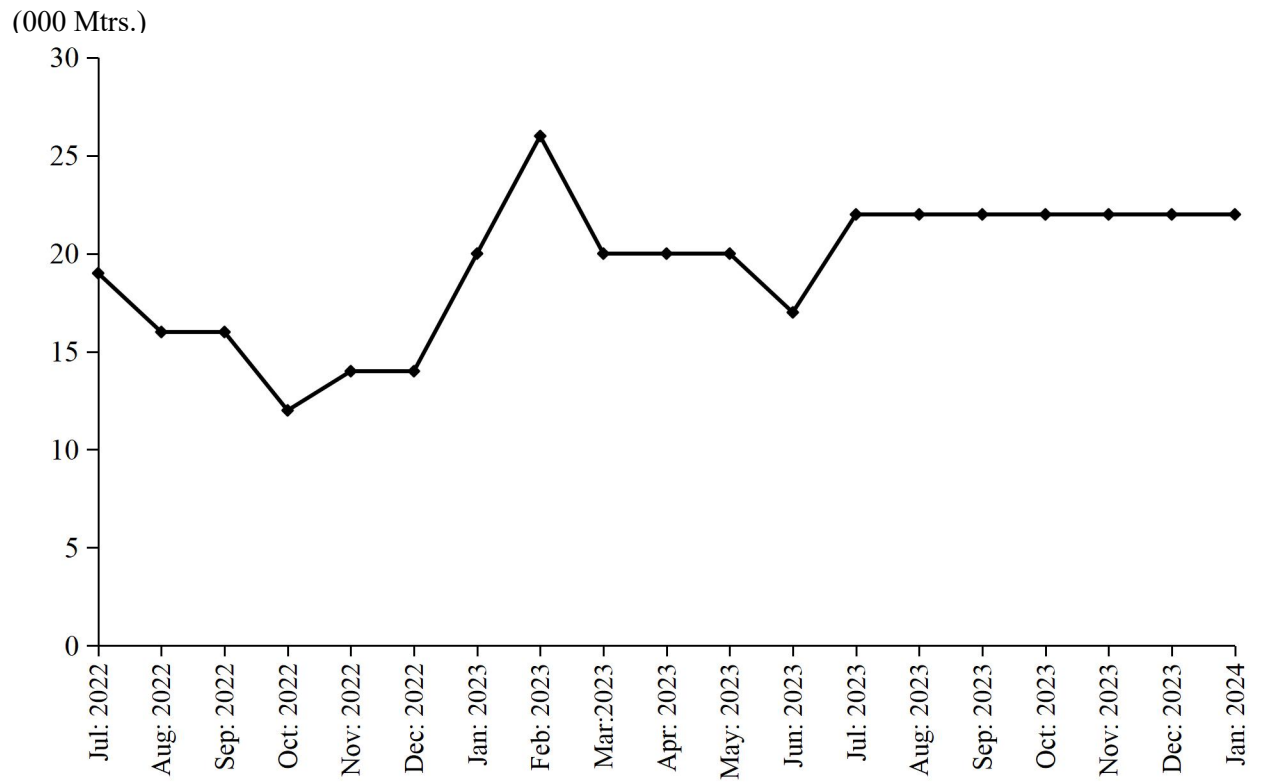


TABLE 13: MANUFACTURING ACTIVITY OF WOOLLEN INDUSTRY.

Year (July-June)/ month	No. Of Reporting Units	PRODUCTION				EMPLOYMENT (Nos.) *	
		Woollen Yarn (M.Tons)	Knitting Wool (M.Tons)	Woollen Worsted Cloth (000 Mtrs.)	Blankets (Nos.)	Total	Production Workers
2007-08	27	1194	3306	819	-	1719	1401
2008-09	27	1046	2778	991	-	1787	1476
2009-10	27	1154	2565	825	-	1797	1491
2010-11	27	1037	2351	844	-	1729	1478
2011-12	27	826	2097	808	-	1680	1405
2012-13	27	740	2250	592	-	1661	1413
2013-14	27	864	1633	221	-	1410	1153
2014-15	27	1510	1805	243	-	1301	1037
2015-16	27	1334	1963	246	-	1252	998
2016-17	27	1738	1898	226	-	1318	1056
2017-18	26	2159	1673	160	-	1397	1116
2018-19	26	1918	1488	11	-	1372	1096
2019-20	25	2731	883	79	-	1318	1055
2020-21	21	7988	428	172	-	1303	1017
2021-22	21	7068	27	223	-	1096	832
2022-23	21	7484	-	214	-	918	721
(Jul: – Jan:)	21	4521	=	111	=	920	724
Jul:	21	662	-	19	-	913	726
Aug:	21	634	-	16	-	913	720
Sep:	21	642	-	16	-	915	721
Oct:	21	643	-	12	-	921	725
Nov:	21	646	-	14	-	919	723
Dec:	21	644	-	14	-	919	723
Jan:	21	650	-	20	-	939	732
Feb:	21	593	-	26	-	919	723
Mar:	21	565	-	20	-	904	708
Apr:	21	579	-	20	-	911	712
May	21	606	-	20	-	913	715
Jun:	21	620	-	17	-	925	729
2023-24							
(Jul: – Jan:)	21	4578	=	154	=	909	712
Jul:	21	619	-	22	-	904	706
Aug:	21	630	-	22	-	904	706
Sep:	21	655	-	22	-	902	706
Oct:	21	660	-	22	-	912	714
Nov:	21	662	-	22	-	912	714
Dec:	21	674	-	22	-	915	718
Jan:	21	678	-	22	-	912	718

* = Monthly Average over seven months.

ANNEXURE – III

PERFORMANCE OF VEGETABLE GHEE/COOKING OIL INDUSTRY

Report for the month of January 2024

Coverage

This report covers Fifty (50) Vegetable Ghee/Cooking Oil Mills of the Punjab Province.

Purchase, Consumption and Stock of Edible Oil

During the month of January 2024, about 37035 metric tons Local Oil and 28115 metric tons Imported Palm Oil was purchased by the Mills, meanwhile, about 16945 metric tons Other Oil was produced as compared to 16047 metric tons produced in the last month. The Oil intake for production of Vegetable Ghee/Cooking Oil during the month was recorded at 38070 metric tons witnessed 3.9% decrease as compared to the last month. The stock of Oil at the end of the month was closed at 93478 metric tons.

Production, Sale and Stock of Vegetable Ghee/Cooking Oil

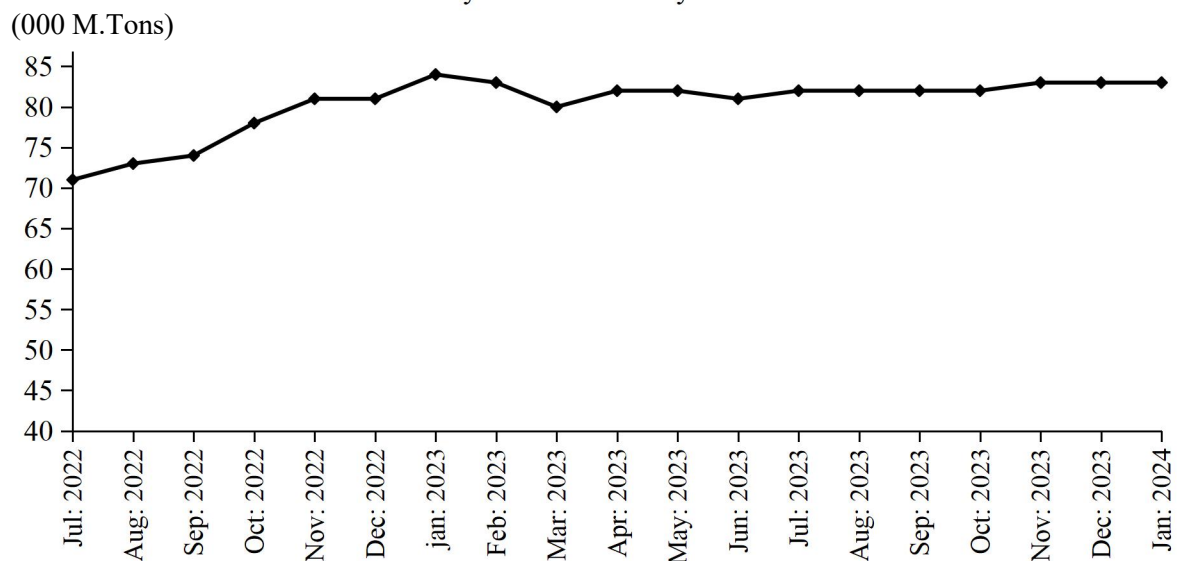
Vegetable Ghee and Cooking Oil production in the province during the month registered 0.2% percent decrease as compared to last month. The data revealed about 82787 metric tons & 19355 metric tons production of Vegetable Ghee and Cooking Oil during the month respectively. The sale of Vegetable Ghee/Cooking Oil during the month was 102142 metric tons witnessed 2.7% percent decrease as compared to the last month. The stock of Vegetable Ghee/Cooking Oil closed at the end of the month at 12207 metric tons.

Employment and Wages/Salaries

Total employment recorded in the Mills of Vegetable Ghee/Cooking Oil during the month was 5848, which was 2.5% lower than the last month. Production workers was 3761 amount of Rs.129.5 million was paid by the Mills against total wages/salaries for the month of November 2023.

PRODUCTION OF VEGETABLE GHEE

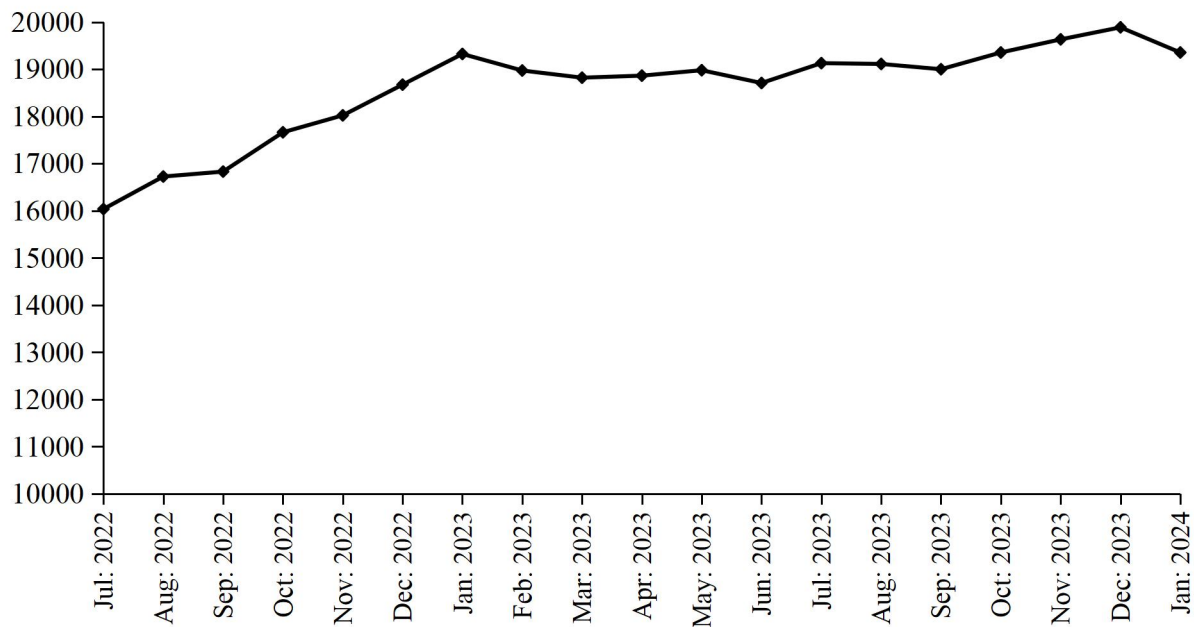
July 2022 to January 2024



PRODUCTION OF COOKING OIL

July 2022 to January 2024

(000 M.Tons)



PRODUCTION OF VEGETABLE GHEE/COOKING OIL

July 2022 to January 2024

(000 M.Tons)

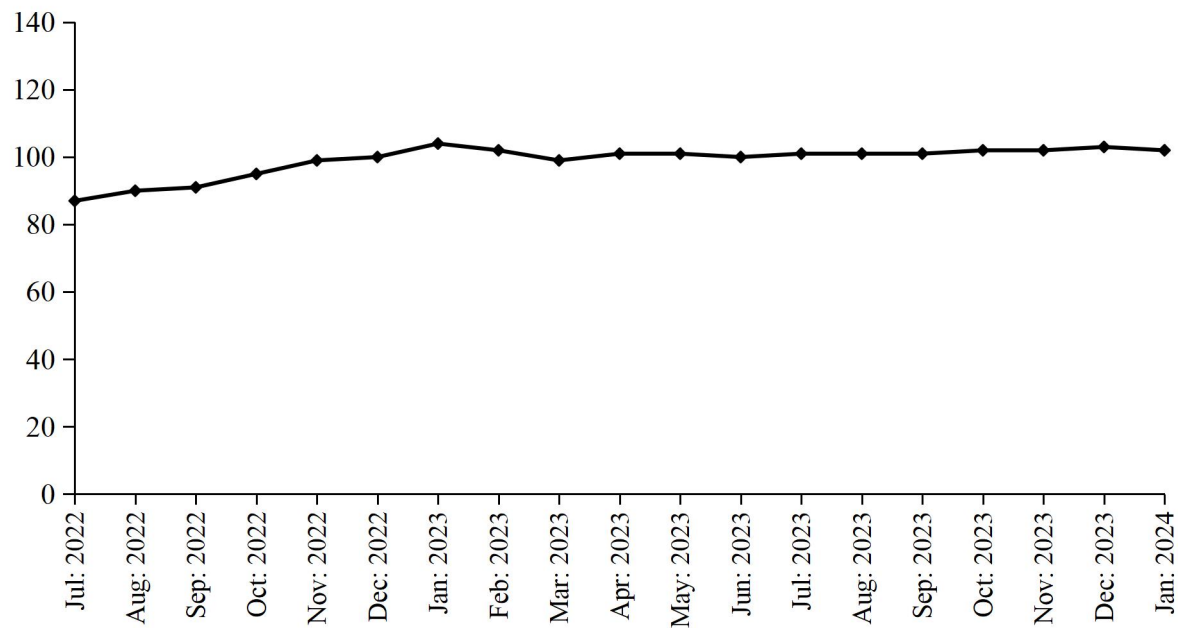


TABLE 15:DETAIL OF THE STOCK, PURCHASED, CONSUMED AND SALE OF EDIBLE OIL.

(M. Tons)

Year (July-June)/ Month	No. Of Report- ing Mills	LOCALLY PURCHASED		PRODUCED		Impor- ted	Consumed / Sent for Refinery	Sold/ Trans- ferred	Stock at the end of Year/ Month
		Cotton Seed Oil	Other Oil	Cotton Seed Oil	Other Oil				
2007-08	54	-	92673	-	-	432703	530500	-	15034
2008-09	54	-	100857	-	5206	398310	487250	-	32157
2009-10	54	-	104202	-	25852	512468	615680	25090	33909
2010-11	54	327	183884	-	35675	482008	634601	77461	23741
2011-12	54	-	183112	-	34577	423778	607993	37657	19558
2012-13	54	-	229765	-	43652	431163	660016	33454	30668
2013-14	54	-	216660	-	38972	495070	696775	42965	41630
2014-15	53	-	162624	-	49151	585062	753658	50338	34471
2015-16	53	-	185823	-	44073	885878	885882	18622	40602
2016-17	50	-	220571	-	60257	633199	881071	39566	33992
2017-18	51	-	206532	-	83627	849072	1074228	60975	38020
2018-19	51	-	213910	-	92005	836051	1055742	77884	46360
2019-20	52	-	248945	-	60421	715798	921638	102073	47813
2020-21	50	-	374560	-	84020	578628	837241	176122	65658
2021-22	44	-	363623	-	137479	560354	710634	330409	86071
2022-23	44	-	442323	-	147675	441595	481286	554926	81452
(Jul: – Jan:)	44	=	238282	=	68256	267628	259751	301004	99482
Jul:	44	-	29239	-	8594	40283	33465	44310	86412
Aug:	44	-	29250	-	8794	39983	32965	42906	88568
Sep:	44	-	29839	-	8807	40121	33750	44628	88957
Oct:	44	-	33981	-	8998	35798	34223	43241	90270
Nov:	44	-	35080	-	9982	35179	36196	37128	97187
Dec:	44	-	37569	-	10002	38372	43751	39940	99439
Jan:	44	-	43324	-	13079	37892	45401	48851	99482
Feb:	44	-	43439	-	16429	40293	42354	56435	100854
Mar:	44	-	41766	-	14890	37662	49269	55988	89915
Apr:	44	-	39534	-	16037	32019	43104	50962	83439
May:	44	-	39551	-	16044	32031	43174	47620	80271
Jun:	44	-	39751	-	16019	31962	43634	42917	81452
2023-24									
(Jul: – Jan:)	44	=	271356	=	113209	216862	315503	273898	93478
Jul:	44	-	39239	-	16513	32370	45496	41549	82529
Aug:	44	-	39136	-	15701	32258	45081	40067	84476
Sep:	44	-	39239	-	16013	32740	45096	40898	86474
Oct:	44	-	39134	-	16045	30119	45449	38171	88152
Nov:	44	-	39035	-	15945	31130	45249	38070	90943
Dec:	44	-	38538	-	16047	30130	44849	37073	93736
Jan:	44	-	37035	-	16945	28115	44283	38070	93478

TABLE 16:DETAIL OFPRODUCTION, SALE AND STOCK OF VEGETABLE GHEE/COOKING OIL

(M.Tons)

Year (July-June)/ Month	No. Of Repor- ting Mills	P R O D U C T I O N			Sale	Stock At the end
		Vegetable Ghee	Cooking Oil	Total		
2007-08	54	438129	55186	493315	494707	6540
2008-09	54	427976	60147	488123	486544	8119
2009-10	54	519765	87487	607252	606825	8546
2010-11	54	524809	96711	621520	622978	7088
2011-12	54	507688	93151	600839	600269	7658
2012-13	54	537111	119437	656548	654031	9059
2013-14	54	533628	20248	159078	156829	10897
2014-15	53	576943	102881	679824	679487	8985
2015-16	53	641889	113708	755597	755526	9057
2016-17	50	644550	110166	754716	755306	8170
2017-18	51	786226	127257	913483	912553	9100
2018-19	51	804497	152352	956849	944020	18074
2019-20	50	880796	193901	1074697	1076905	15866
2020-21	50	860505	198332	1058837	1063974	10729
2021-22	44	859227	193809	1053036	1051023	12742
2022-23	44	950409	217618	1168027	1168721	12048
(Jul: – Jan:)	<u>44</u>	<u>542376</u>	<u>123273</u>	<u>665649</u>	<u>666774</u>	<u>11617</u>
Jul:	44	71360	16036	87396	87036	13102
Aug:	44	73360	16725	90085	87767	15420
Sep:	44	74112	16830	90942	91607	14755
Oct:	44	77531	17663	95194	95195	14754
Nov:	44	80545	18022	98567	97584	15737
Dec:	44	80994	18673	99667	101393	14011
Jan:	44	84474	19324	103798	106192	11617
Feb:	44	82964	18973	101937	101741	11813
Mar:	44	80216	18821	99037	98190	12660
Apr:	44	81823	18864	100687	102183	11164
May	44	81879	18979	100858	100235	11787
Jun:	44	81151	18708	99859	99598	12048
<u>2023-24</u>						
(Jul: – Jan:)	<u>44</u>	<u>579828</u>	<u>135472</u>	<u>715300</u>	<u>715141</u>	<u>12207</u>
Jul:	44	82249	19129	101378	100981	12445
Aug:	44	82106	19112	101218	100824	12839
Sep:	44	82038	19000	101038	100621	13256
Oct:	44	81878	19355	101233	102262	12227
Nov:	44	82787	19633	102420	101471	13176
Dec:	44	82983	19888	102871	102825	13222
Jan:	44	82787	19355	102142	103157	12207

TABLE 17: EMPLOYMENT AND WAGES/SALARIES.

Year (July-June)/ Month	No. Of Reporting Mills	E M P L O Y M E N T (NOS)*			WAGES/SALARIES (000 Rs.)	
		Total	Production Workers	Office Staff	Total	Production Workers
2007-08	54	3917	2408	1509	19923	11167
2008-09	54	3406	2109	1297	23522	12589
2009-10	54	3449	2176	1273	30532	17526
2010-11	54	3675	2366	1309	34883	20727
2011-12	54	3703	2558	1145	35708	20873
2012-13	54	3798	2625	1173	40008	23277
2013-14	54	4072	2753	1319	50720	28667
2014-15	53	4009	2756	1253	55717	31302
2015-16	53	4122	2901	1221	64521	38408
2016-17	50	3933	2678	1255	62720	35328
2017-18	51	4105	2737	1368	65889	38083
2018-19	52	4111	2787	1324	69521	39564
2019-20	50	5001	3286	1715	77791	41351
2020-21	50	5111	3250	1861	91913	42105
2021-22	44	5295	3287	2008	99277	48422
2022-23	44	5649	3464	2185	122345	59546
(Jul: – Jan:)	44	5525	3368	2157	115863	58101
Jul:	44	5351	3392	1959	105579	51995
Aug:	44	5351	3392	1959	105579	51995
Sep:	44	5371	3362	2009	105974	51535
Oct:	44	5525	3254	2271	122547	60109
Nov:	44	5611	3265	2346	123348	62129
Dec:	44	5629	3267	2362	123795	63619
Jan:	44	5839	3644	2195	124217	65322
Feb:	44	5810	3583	2227	130667	61288
Mar:	44	5752	3554	2198	130031	61724
Apr:	44	5848	3611	2237	131845	62020
May:	44	5855	3621	2234	132330	62050
Jun:	44	5848	3619	2229	132223	60766
2023-24						
(Jul: – Jan:)	44	5835	3709	2126	129661	60752
Jul:	44	5798	3681	2117	129493	60673
Aug:	44	5798	3681	2117	129493	60673
Sep:	44	5798	3681	2117	129493	60673
Oct:	44	5795	3680	2115	129512	60751
Nov:	44	5810	3690	2120	129611	60840
Dec:	44	6000	3786	2214	130512	60901
Jan:	44	5848	3761	2087	129512	60751

* =Monthly averages over the seven months.

PERFORMANCE OF BEVERAGES INDUSTRY

Report for the month of January 2024

Coverage

The report covers Thirty (30) Beverages factories of the Punjab.

Production

The factories produced 108411 thousand litres of Soft Drinks and 10259 thousand litres of Fruit Juices during January 2024. The production of Soft Drinks and Fruit Juices was 31.4%, and 8.4% higher than the last month respectively.

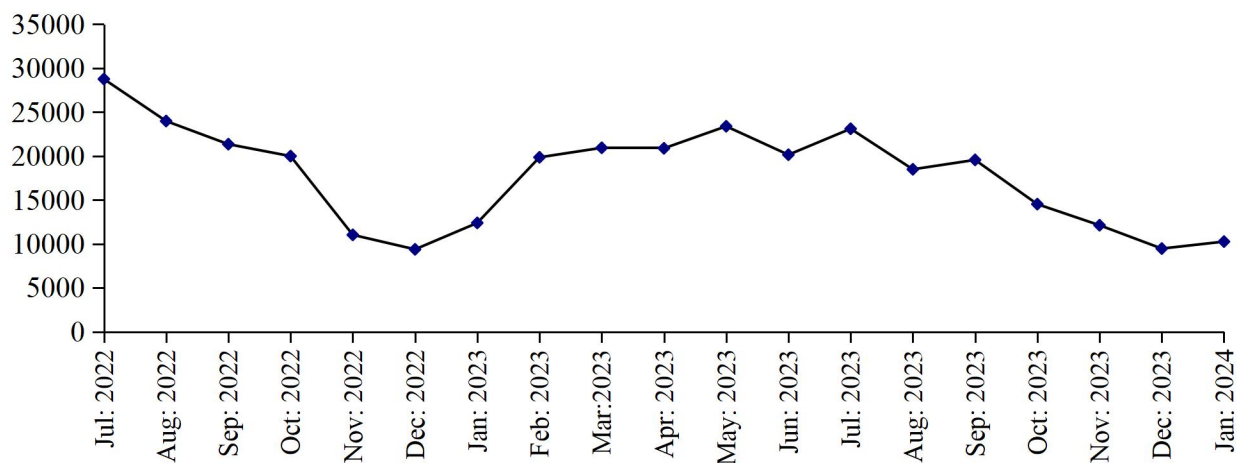
Employment

Total employment in these factories was 7966 which was 0.1% higher than the last month. Out of this total employment 4157 were production workers.

PRODUCTION OF FRUIT JUICES

July 2022 to January 2024

('000'Ltrs)



PRODUCTION OF SOFT DRINKS

July 2022 to January 2024

('000'Ltrs)

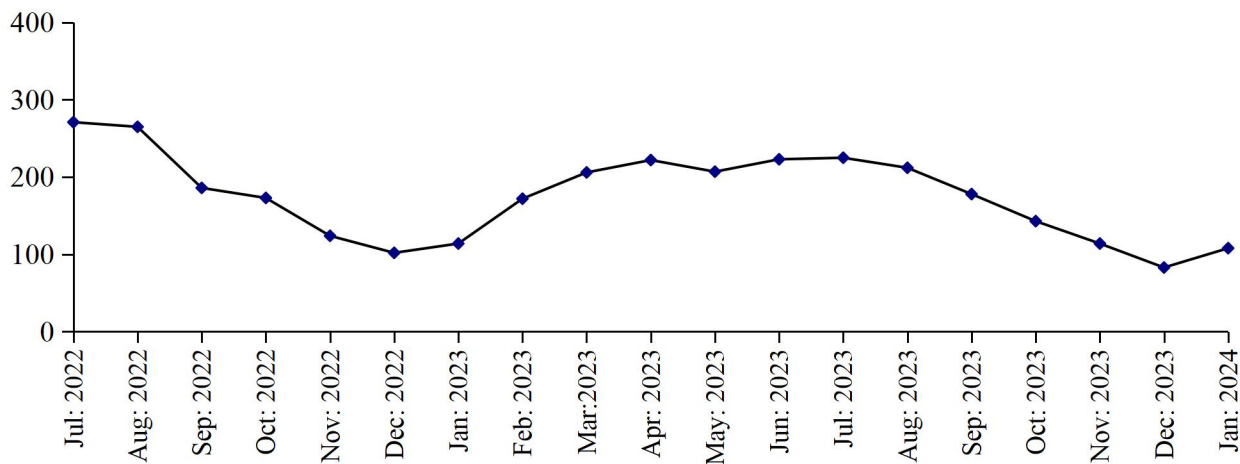


Table 18: MANUFACTURING ACTIVITY OF BEVERAGES INDUSTRY.

Year (July-June)/ Month	No. Of Reporting Units	PRODUCTION (in '000' Ltrs)		EMPLOYMENT (NOS.)*	
		Soft Drinks	Fruit Juices	Total	Production Workers
2007-08	37	1367154	98692	6621	2733
2008-09	37	1445760	67932	6492	3037
2009-10	37	1041643	68020	6925	3323
2010-11	37	982963	92115	7577	3027
2011-12	37	1155234	116048	7948	3136
2012-13	37	1349580	120176	8224	3501
2013-14	37	1409663	127571	8125	3659
2014-15	34	1552102	156889	8328	4379
2015-16	30	1722698	139237	15461	8600
2016-17	29	1964432	154877	8549	3997
2017-18	30	1893694	177397	8981	4216
2018-19	31	1830166	219885	8529	4306
2019-20	31	1587814	183550	8173	4099
2020-21	31	1964275	172608	7988	4053
2021-22	30	2258557	214698	8173	4210
2022-23	30	2196507	227924	8244	4267
(Jul: – Jan:)	<u>30</u>	<u>116627</u>	<u>122719</u>	<u>8199</u>	<u>4247</u>
Jul:	30	254026	26462	8425	4413
Aug:	30	214578	22130	8384	4377
Sep:	30	185552	21348	8203	4322
Oct:	30	172708	19991	8184	4264
Nov:	30	124018	11026	8040	4145
Dec:	30	101568	9377	8086	4107
Jan:	30	113829	12385	8070	4102
Feb:	30	172135	19856	8192	4199
Mar:	30	206094	20937	8359	4332
Apr:	30	221576	20878	8350	4304
May	30	207467	23387	8318	4323
Jun:	30	222956	20147	8317	4313
<u>2023-24</u>					
(Jul: – Jan:)	<u>30</u>	<u>1063169</u>	<u>107522</u>	<u>8078</u>	<u>4226</u>
Jul:	30	225104	23104	8272	4309
Aug:	30	212098	18489	8240	4278
Sep:	30	178185	19560	7912	4283
Oct:	30	142799	14523	8141	4221
Nov:	30	114093	12122	8054	4197
Dec:	30	82479	9465	7962	4136
Jan:	30	108411	10259	7966	4157

* =Monthly Average over the seven months.

PERFORMANCE OF SUGAR INDUSTRY

Report for the month of January 2024

Coverage

This report covers Forty four (44) Sugar Mills located in the Punjab Province.

Cane Crushing

Total cane crushed for the month of “January” 2024, was 1261716 Metric Tons. The has been started in November 2023.

Production

Total Sugar Produced during the month of “January” 2024, was 2617181 Metric tons. The Production has been reported due to on season.

Sale and Stock of Sugar 2023-24

The sugar sold out from the previous stock as reported during the month of January 2024 was 2381723 Metric Tons and the remaining stock of sugar is 1587167 Metric Tons.

Employment and Wages / Salaries

Total employment during the month of January 2024 was 36972. Out of this total employment, the number of production workers were 23478. The total wages/salaries during this month is amounted to 800 million rupees.

MONTHLY PRODUCTION OF SUGAR

Season 2022-23 VS 2023-24

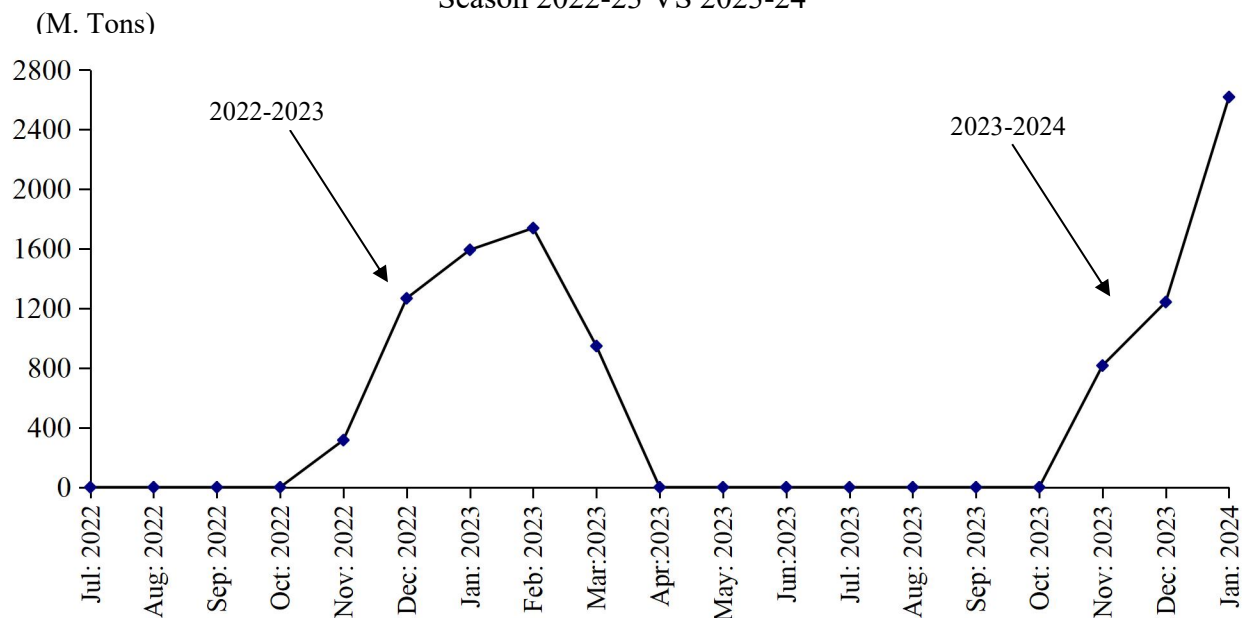


Table 19: MANUFACTURING ACTIVITY OF SUGAR INDUSTRY.

Year	Months	No. Of Units Covered	Sugarcane Crushed	Opening Stock Of Sugar	Production Of Sugar	Sale Of Sugar	(Metric Tons)	
							Closing Stock Of Sugar	Molasses
2006-07	Nov: 06 – Apr: 07	41	27105733	-	2163263	-	-	1544850
2007-08	Nov: 07- May 08	41	29394739	-	2676345	-	-	1751935
2008-09	Nov:08-Apr:09	45	20388990	-	1926209	-	-	1280422
2009-10	Nov:09 –March10	46	22460655	-	1987285	-	-	887362
2010-11	Nov:10 –April 11	46	27026172	128193	2475907	2013178	590922	709876
2011-12	Oct: 11- Apr: 12	46	32310644	590922	3057611	2633244	1015289	750699
2012-13	Nov:12–May 13	46	35745878	1015289	3739171	4064180	690280	666328
2013-14	Nov:13–Apr: 14	46	30864941	690280	3075144	2013384	1752040	807507
2014-15	Nov:14–Apr: 15	46	31453631	1752040	3036312	2775995	2012357	66682
2015-16	Nov:15–Apr: 16	44	28922605	2012357	2666278	2951038	1727597	571184
2016-17	Nov: 16-Apr: 17	44	44143327	1727597	4314228	2754948	3286877	1522522
2017-18	Nov: 17-Apr: 18	45	53190310	3286877	5111165	6745070	1652972	1352698
2018-19	Dec: 18-Apr: 19	45	30835769	1652972	4868545	4278122	2243395	1361477
2019-20	Nov: 19-Mar:20	44	23839905	1973322	3102104	4054794	1020632	671189
2020-21	Nov: 20-Mar:21	44	50011167	1020632	3877150	3620582	1277200	1166132
2021-22	Nov:21-Apr:22	44	47559505	1277200	5258131	4696627	1838704	2631504
2022-23	Nov:22-Apr:23	44	21410225	1838704	5575980	5397591	2017093	778634
<u>2023-24</u>	<u>(Jul: – Jan:)</u>	<u>44</u>	<u>2844968</u>	<u>2017093</u>	<u>2960871</u>	<u>4332663</u>	<u>1087168</u>	<u>680959</u>
	Jul:	44	-	2017093	-	394243	1622850	-
	Aug:	44	-	1622850	-	289365	1333485	-
	Sep:	44	-	1333485	-	286592	1046893	-
	Oct:	44	-	1046893	-	287672	759221	-
	Nov:	44	83131	759554	43699	279912	523008	-
	Dec:	44	1100121	523008	1241857	413156	1351709	330961
	Jan:	44	1261716	1351709	1675315	2381723	645299	349998

TABLE 20: EMPLOYMENT AND WAGES / SALARIES

Year /Months	No. Of Units Covered	EMPLOYMENT (Nos.)			WAGES / SALARIES (000 Rs.)	
		Total	Production Workers	Office Staff	Total	Production Workers
2008-2009	<u>45</u>	<u>21716</u>	<u>13193</u>	<u>8524</u>	<u>164256</u>	<u>95503</u>
(Crushing Season)		27532	17387	10145	193291	119674
(Non-Crushing Season)		20262	12144	32473	156998	89461
2009-10	<u>46</u>	<u>24448</u>	<u>15250</u>	<u>9197</u>	<u>197290</u>	<u>116870</u>
(Crushing Season)		31580	20435	11145	247830	153135
(Non-Crushing Season)		19354	11547	7807	161190	90967
2010-11	<u>46</u>	<u>22967</u>	<u>14468</u>	<u>8499</u>	<u>209749</u>	<u>126526</u>
(Crushing Season)		27879	18340	9539	246395	154557
(Non-Crushing Season)		18055	10595	7459	173102	98495
2011-12	<u>46</u>	<u>23078</u>	<u>13932</u>	<u>9145</u>	<u>230146</u>	<u>132212</u>
(Crushing Season)		26017	10957	8007	204749	111423
(Non-Crushing Season)		18964	16058	9959	248287	147060
(2012-13)	<u>46</u>	<u>25311</u>	<u>16021</u>	<u>9848</u>	<u>276892</u>	<u>171611</u>
(Crushing Season)		28541	19094	10404	318296	203325
(Non-Crushing Season)		20788	11719	9069	127701	127212
(2013-14)	<u>46</u>	<u>25672</u>	<u>16563</u>	<u>9009</u>	<u>318239</u>	<u>196709</u>
(Crushing Season)		29968	19690	10278	366452	229798
(Non-Crushing Season)		21300	13907	7393	260446	162496
(2014-15)	<u>46</u>	<u>23845</u>	<u>15042</u>	<u>8804</u>	<u>337354</u>	<u>207609</u>
(Crushing Season)		27988	18137	9852	389645	244041
(Non-Crushing Season)		19703	11947	7755	285051	171178
(2015-16)	<u>44</u>	<u>22554</u>	<u>14023</u>	<u>8531</u>	<u>341965</u>	<u>205969</u>
(Crushing Season)		25752	16141	9611	388494	237002
(Non-Crushing Season)		19356	11738	7618	298435	174937
2016-17	<u>45</u>	<u>24469</u>	<u>14900</u>	<u>9569</u>	<u>404061</u>	<u>250817</u>
(Crushing Season)		30354	18632	11722	480241	305510
(Non-Crushing Season)		18583	11168	7415	327881	156664
2017-18	<u>45</u>	<u>26874</u>	<u>16910</u>	<u>9964</u>	<u>588807</u>	<u>325440</u>
(Crushing Season)		31429	20009	11419	706001	393686
(Non-Crushing Season)		22318	13810	8507	471613	257195
2018-19	<u>45</u>	<u>28234</u>	<u>18208</u>	<u>10226</u>	<u>720481</u>	<u>406815</u>
(Crushing Season)		32495	21556	10939	794668	459287
(Non-Crushing Season)		25190	15817	9373	667492	369336
2019-20	<u>45</u>	<u>19599</u>	<u>12795</u>	<u>6834</u>	<u>419356</u>	<u>265765</u>
(Crushing Season)		31689	21217	10472	722697	285965
(Non-Crushing Season)		22940	15223	9373	7717	507681
2020-21	<u>44</u>	<u>27571</u>	<u>17326</u>	<u>10245</u>	<u>616305</u>	<u>359633</u>
(Crushing Season)		33603	21507	12096	692380	424448
(Non-Crushing Season)		21538	13145	8393	540231	294819
2021-22	<u>44</u>	<u>28202</u>	<u>17665</u>	<u>10537</u>	<u>680443</u>	<u>439798</u>
(Crushing Season)		34807	21899	12908	760582	504374
(Non-Crushing Season)		21597	13430	8167	600255	375223
2022-23	<u>44</u>	<u>28585</u>	<u>18343</u>	<u>10242</u>	<u>735006</u>	<u>503106</u>
(Crushing Season)		36555	24339	12216	829622	487871
(Non-Crushing Season)		22893	14203	8690	667423	431143
(Jul: – Jan:)	<u>44</u>	<u>29838</u>	<u>18350</u>	<u>11488</u>	<u>767798</u>	<u>515957</u>
Jul:	44	25110	15232	9878	736080	487363
Aug:	44	24975	15094	9881	736382	487666
Sep:	44	25217	15207	10010	754281	509523
Oct:	44	25318	15381	9937	755191	512521
Nov:	44	35006	21501	13505	795968	537730
Dec:	44	36271	22560	13711	796871	537916
Jan:	44	36972	23478	13494	799813	538979

*= Monthly average over the seven months/ crushing/Non crushing season.

PERFORMANCE OF CIGARETTES INDUSTRY

Report for the month of January 2024

Coverage

This report covers three (03) Cigarettes factories of the Punjab.

Production

The production of Cigarettes during the month was 863 Million Nos. Which was 5.2% lower than December 2023.

Sale and Stock

Sale of Cigarettes during the month was 935 Million Nos. Which was 7.4% lower than December 2023.

Employment

Total employment in these factories during the month was 583, which was same as the last month. Out of this total employment, 324 were production workers. Total wages/salaries for the month were amounted to Rs.68.7 Millions.

PRODUCTION OF CIGARETTES

July 2022 to January 2024

(Millions Nos.)

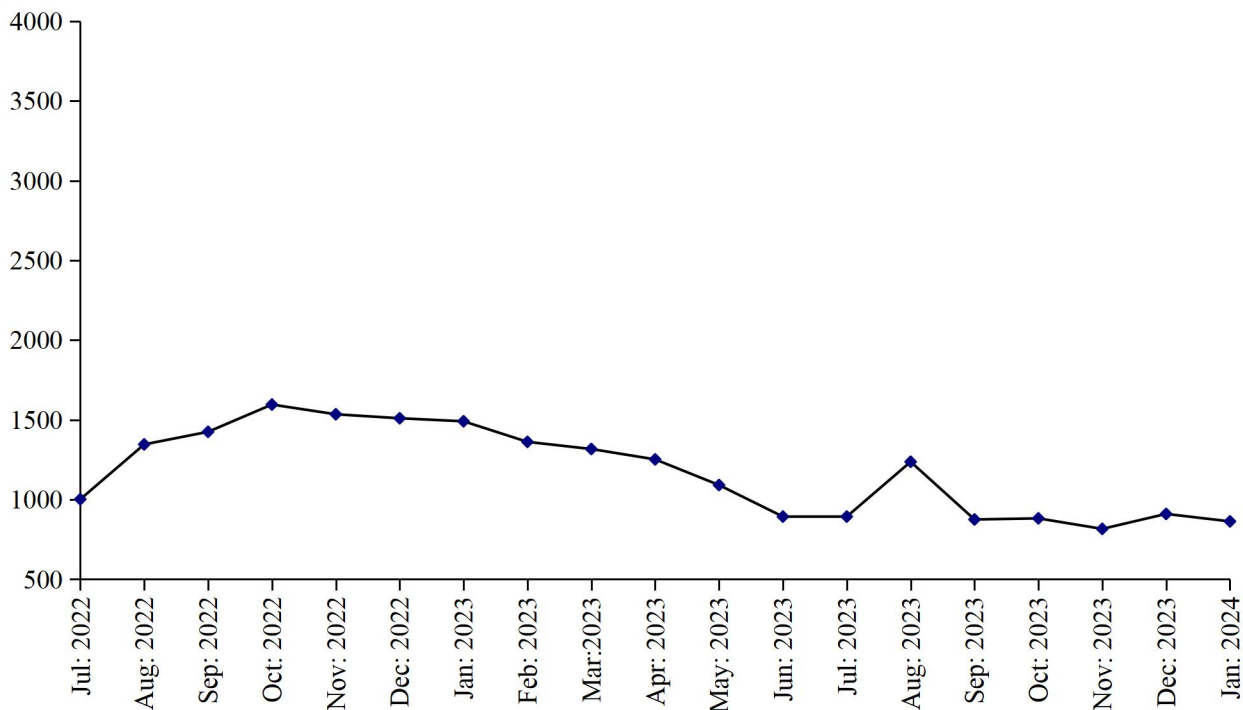


Table No.21 MANUFACTURING ACTIVITY OF CIGARETTES INDUSTRY.

Year (July-June)/ Month	No. Of Reporting Units	PRODUCTION, SALE & STOCK OF CIGARETTES (Million Nos.)			EMPLOYMENT* (Nos.)		WAGES/SALARIES (‘000’Rs.)	
		Production	Sale	Stock at the end	Total	Production Workers	Total	Production Workers
2006-07	3	29901.9	29642.1	1297.5	1398	1272	18278	14591
2007-08	3	34987.2	35762.5	510	1364	1238	22291	16829
2008-09	3	43058.0	42901.0	667	1307	1089	23946	18512
2009-10	3	37296.0	36987.0	976	1269	1136	26379	20638
2010-11	3	37944	37420	1500	1178	1051	28432	25294
2011-12	3	34955	35961	494	998	898	32942	29936
2012-13	3	37845	37996	343	907	811	27023	22214
2013-14	3	33094	24934	8503	904	797	27781	22032
2014-15	3	33966	38328	4141	905	793	32807	24413
2015-16	3	27502	29914	1729	808	707	33019	24855
2016-17	3	28452	274135	3046	603	509	33264	25008
2017-18	3	28324	30503	867	509	425	32139	23057
2018-19	3	35850	27486	9231	552	446	36978	21686
2019-20	3	25634	21861	13234	640	493	45641	20945
2020-21	3	21353	19306	15124	657	494	50439	21564
2021-22	3	19438	19013	15549	658	490	55998	24776
2022-23	3	15820	23373	7996	618	414	64979	33029
(Jul: - Jan:)	3	9905	10438	13016	642	438	65547	29922
Jul:	3	1002	1551	15000	630	372	63984	25377
Aug:	3	1346	1472	14874	639	444	65178	30192
Sep:	3	1425	1577	14722	643	452	65586	30736
Oct:	3	1596	1573	14745	639	448	65976	30731
Nov:	3	1535	1519	14761	648	451	66036	30805
Dec:	3	1510	1415	14856	648	451	66036	30805
Jan:	3	1491	3331	13016	648	451	66036	30805
Feb:	3	1362	2235	12143	608	358	63161	38023
Mar:	3	1317	1825	11635	588	358	63231	38223
Apr:	3	1252	2433	10454	581	389	64943	39157
May	3	1091	2333	9212	577	399	64943	38156
Jun:	3	893	2433	7672	571	389	64643	33343
2023-24								
(Jul: - Jan:)	3	6476	11453	2695	586	336	68832	30510
Jul:	3	893	2033	6532	591	405	69943	38353
Aug:	3	1237	2109	5660	585	325	68244	34307
Sep:	3	875	2222	4313	586	325	68730	28207
Oct:	3	882	2122	3073	586	325	68725	28195
Nov:	3	816	1022	2867	586	325	68725	28195
Dec:	3	910	1010	2767	583	324	68730	28107
Jan:	3	863	935	2695	583	324	68730	28207

* = Monthly Average over the seven months.

PERFORMANCE OF CEMENT INDUSTRY

Report for the month of January 2024

Coverage

This report covers twelve (12) factories in the Punjab.

Production of Clinker

The cement factories produced 1585141 Metric Tons of Clinker during January 2024, which was 0.4% lower than the last month. The factories consumed 1323839 Metric Tons of Clinker to produce Cement.

Production of Cement

The cement factories produced 1563532 Metric Tons of Cement during the month, which was 16.5% lower than the last month.

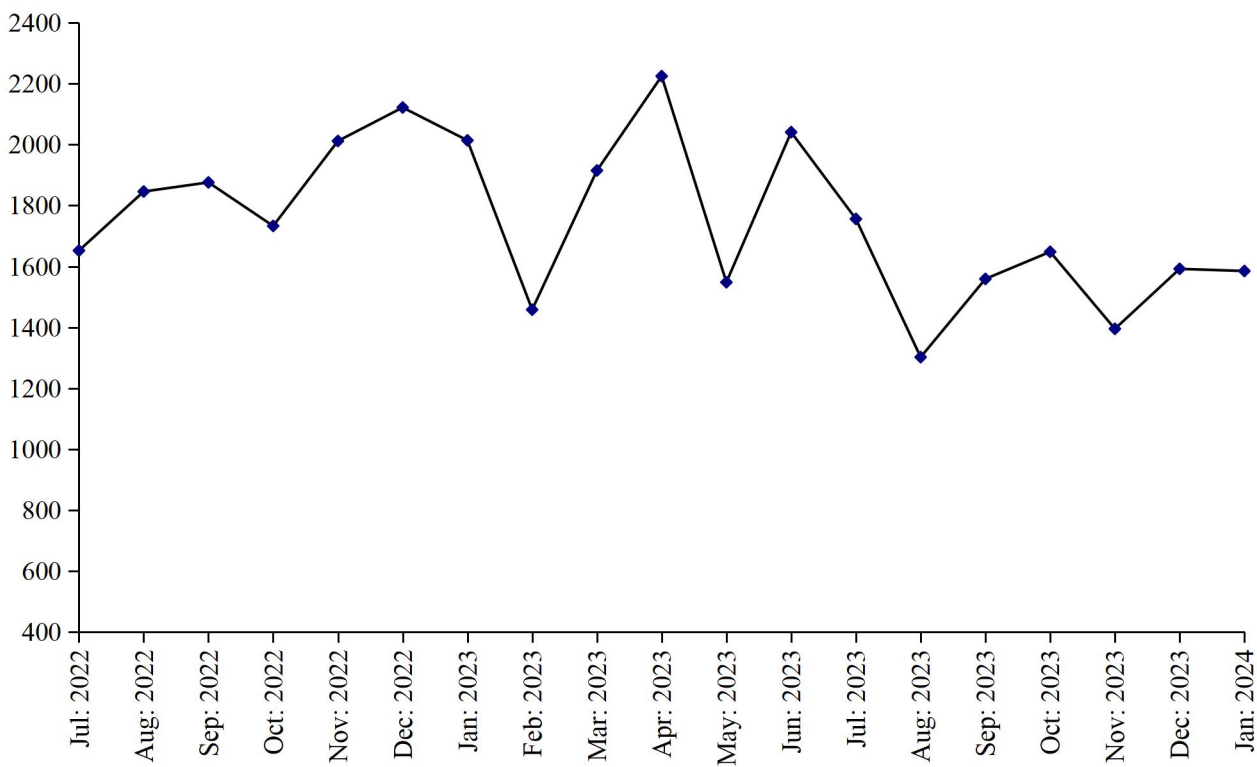
Employment

Total employment in the factories as reported was 7428 which was almost 2.1% higher than the last month. Out of this total employment, 4423 were production workers. Total wages/salaries for the month under report were 800.4 Million Rupees.

PRODUCTION OF CLINKER

July 2022 to January 2024

(000 M. Tons)



PRODUCTION OF CEMENT

July 2022 to January 2024

(000 M. Tons)

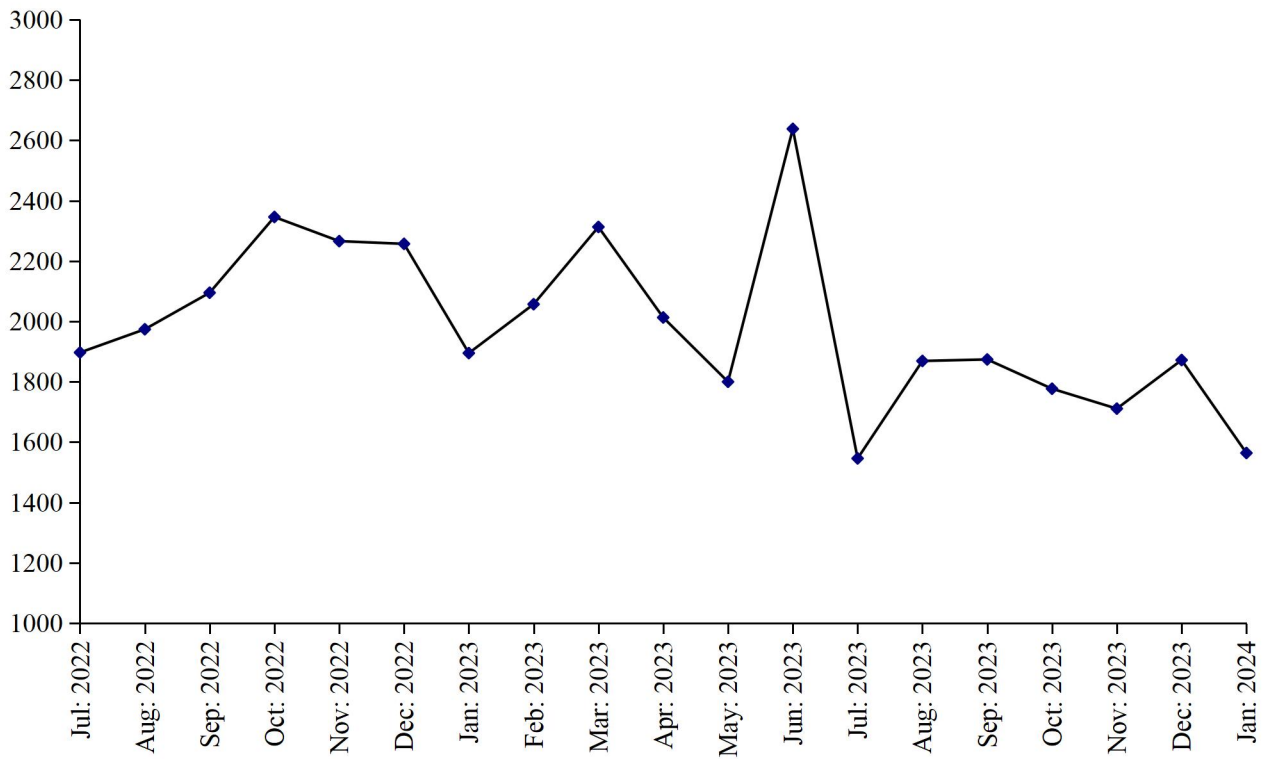


Table No.22 DETAIL OF PRODUCTION, CONSUMPTION AND STOCK OF CLINKER.

(M.Tons)

Year (July-June)/ Month	No. Of reporting Units	Stock at the Beginning	Production	Consumption	Stock at the end
2007-08	13	412569	10403031	10417823	397777
2008-09	13	397777	14275929	13996684	677022
2009-10	13	677022	15438372	15593172	522222
2010-11	13	522222	14340746	13920004	942964
2011-12	13	942964	13937197	13851368	1028793
2012-13	12	1028793	15210981	14730923	1508851
2013-14	12	1508851	15780981	15535319	1754513
2014-15	12	1754513	15926314	15853807	1827020
2015-16	12	1827020	15973852	17140392	660480
2016-17	12	660480	19101688	18498074	1264094
2017-18	12	1264094	20080615	19767345	1577364
2018-19	12	1577364	18892935	18992061	1478238
2019-20	12	1478238	19838457	19197793	2118902
2020-21	12	2118902	21735282	21668097	2186087
2021-22	12	2186087	22442834	22377411	2251510
2022-23	12	2251510	19792339	19864127	2179722
(Jul: – Jan:)	<u>12</u>	<u>2251510</u>	<u>11479899</u>	<u>11611385</u>	<u>2120024</u>
Jul:	12	2251510	2088489	1370038	2969961
Aug:	12	2969961	1027513	1464659	2532815
Sep:	12	2532815	1476615	1777019	2232411
Oct:	12	2232411	1524220	1781599	1975032
Nov:	12	1975032	1769433	1831898	1912567
Dec:	12	1912567	2041714	1717585	2236696
Jan:	12	2236696	1551915	1668587	2120024
Feb:	12	2120024	2063896	1884200	2299720
Mar:	12	2299720	1713215	1687196	2325739
Apr:	12	2325739	1428362	1839402	2414699
May:	12	2414699	1419425	1649867	2184257
Jun:	12	2184257	1687542	1692077	2179722
<u>2023-24</u>					
(Jul: – Jan:)	<u>12</u>	<u>2179722</u>	<u>10835388</u>	<u>10631523</u>	<u>2883587</u>
Jul:	12	2179722	1755582	1288545	2646759
Aug:	12	2646759	1301811	1601107	2347463
Sep:	12	2347463	1558920	1635401	2270982
Oct:	12	2270982	1647523	1656235	2262270
Nov:	12	2262270	1394661	1498822	2158109
Dec:	12	2158109	1591750	1627574	2122285
Jan:	12	2122285	1585141	1323839	2383587

Table No.23 DETAIL OF PRODUCTION, SALE AND STOCK OF CEMENT

(M.Tons)

Year (July- June)/ Month	No. Of Reporting Units	Stock at the beginning	Production	S O L D			Stock at the end
				Total	Within country	Export- ed	
2007-08	13	145295	10713689	10767713	10767713	-	91271
2008-09	13	91271	14227580	14068486	14068486	-	250365
2009-10	13	250365	16951531	16973086	16973086	-	228810
2010-11	13	228810	14685518	14528966	14528966	-	385362
2011-12	13	385362	15269328	15299852	15299852	-	354838
2012-13	12	354838	15929819	15922363	15922363	-	362294
2013-14	12	362294	16668915	16472689	16472689	-	558520
2014-15	12	558520	17175158	17358446	17358446	-	375232
2015-16	12	375232	18479957	18588721	18588721	-	266468
2016-17	12	266468	19569160	19445145	19445145	-	390483
2017-18	12	390483	22067871	22188484	22188484	-	269870
2018-19	12	269870	21077461	20903996	20903996	-	443335
2019-20	12	443335	20386575	20021979	20021979	-	807931
2020-21	12	807931	24535481	24360442	24360442	-	982970
2021-22	12	982970	25551134	25220928	25220928	-	1313176
2022-23	12	1313176	22316924	22263250	22263250	-	1366850
(Jul: –Jan:)	12	1313176	13193250	13210015	13210015	=	1296411
Jul:	12	1313176	1288682	1186775	1186775	-	1415083
Aug:	12	1415083	1603861	1710889	1710889	-	1308055
Sep:	12	1308055	2052463	2052262	2052262	-	1308256
Oct:	12	1308256	2130127	2089301	2089301	-	1349082
Nov:	12	1349082	2140314	2133084	2133084	-	1356312
Dec:	12	1356312	2060063	2036330	2036330	-	1380045
Jan:	12	1380045	1917740	2001374	2001374	-	1296411
Feb:	12	1296411	2062575	2041991	2041991	-	1316995
Mar:	12	1316995	1988018	1978052	1978052	-	1326961
Apr:	12	1326961	1548970	1611802	1611802	-	1264129
May:	12	1264129	1730389	1711181	1711181	-	1283337
Jun:	12	1283337	1793722	1710209	1710209	-	1366850
2023-24							
(Jul: – Jan:)	12	1366850	12211951	12001799	12001799	=	1577002
Jul:	12	1366850	1545757	1495974	1495974	-	1416633
Aug:	12	1416633	1868539	1887634	1887634	-	1397538
Sep:	12	1397538	1873939	1789233	1789233	-	1482244
Oct:	12	1482244	1777130	1712812	1712812	-	1546562
Nov:	12	1546562	1711240	1712369	1712369	-	1545433
Dec:	12	1545433	1871814	1831915	1831915	-	1585332
Jan:	12	1585332	1563532	1571862	1571862	-	1577002

Table No.24 EMPLOYMENT AND WAGES/SALARIES OF CEMENT INDUSTRY

Year (July-June)/ Month	No. Of Reporting Units	EMPLOYMENT (No)*			WAGES/SALARIES (000 Rs.)	
		Total	Production Workers	Non-Production Workers	Total	Production Workers
2007-08	13	5429	3200	2229	113212	54248
2008-09	13	5858	3906	1952	137089	755759
2009-10	13	6272	4292	1980	157409	80564
2010-11	13	6713	4631	2082	177979	94502
2011-12	13	6614	4729	1885	195861	115717
2012-13	12	6463	4591	1872	226498	135792
2013-14	12	6593	4648	1945	241852	140576
2014-15	12	6767	4817	1950	301847	178187
2015-16	12	7046	5009	2037	384190	222124
2016-17	12	7627	5178	2448	521509	292515
2017-18	12	8033	5262	2771	729712	399586
2018-19	12	8077	5360	2717	668155	384602
2019-20	12	7988	5400	2588	634682	387052
2020-21	12	7912	5328	2583	661961	405863
2021-22	12	7966	5317	2649	717914	438054
2022-23	12	7394	4514	2880	668006	366140
(Jul: – Jan:)	<u>12</u>	<u>7444</u>	<u>4555</u>	<u>2889</u>	<u>672315</u>	<u>370361</u>
Jul:	12	7449	4695	2754	662075	371559
Aug:	12	7426	4699	2727	673867	375353
Sep:	12	7426	4700	2726	673448	375018
Oct:	12	7484	4513	2971	676081	371098
Nov:	12	7466	4434	3032	673403	366475
Dec:	12	7444	4428	3016	673371	366319
Jan:	12	7412	4417	2995	673962	366702
Feb:	12	7440	4423	3017	657608	366947
Mar:	12	7322	4305	3017	666397	360466
Apr:	12	7296	4533	2763	658579	358743
May:	12	7264	4497	2767	661213	358680
Jun:	12	7300	4521	2779	666067	356314
<u>2023-24</u>						
(Jul: – Jan:)	<u>12</u>	<u>7296</u>	<u>4366</u>	<u>2930</u>	<u>777399</u>	<u>409088</u>
Jul:	12	7135	4416	2719	712882	379167
Aug:	12	7298	4346	2952	795629	412115
Sep:	12	7314	4359	2955	774383	404138
Oct:	12	7310	4351	2959	793464	419529
Nov:	12	7309	4342	2967	785894	407272
Dec:	12	7278	4325	2953	779116	404152
Jan:	12	7428	4423	3005	800427	437245

* = Monthly average over the seven months.

PERFORMANCE OF FERTILIZER INDUSTRY

Report for the month of January 2024

Coverage

This report covers Seven (07) fertilizer factories in the Punjab Province.

Production

These factories produced 318002 Metric Tons of Urea, 0 Metric Tons of Super Phosphate, 74180 Metric Tons of Amm. Nitrate and 65999 Metric Tons of Nitro Phosphate. The overall production of Fertilizer during the month was 0.9% lower than the last month.

Sale and Stock

These fertilizer factories reported a sale of 315621 Metric Tons of Urea, 4899 Metric Tons of Super phosphate, 74115 Metric Tons of Amm. Nitrate and 65802 Metric Tons of Nitro Phosphate. The stock of Urea, Super Phosphate, Amm. Nitre and Nitro Phosphate at the end of the month was 38821, 1156, 720 and 420 Metric Tons respectively.

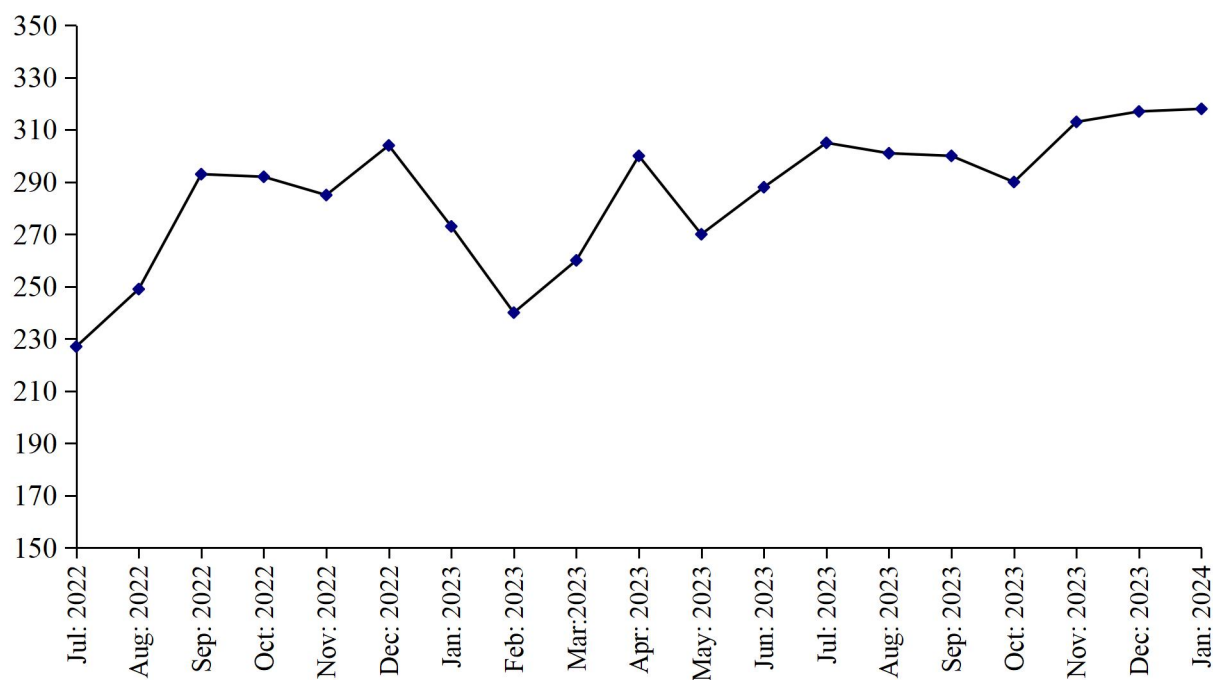
Employment and Wages/Salaries

Total employment during the month was 5507 which is. 0.8% higher than the last month. Out of this total employment 3464 were production workers. Total Wages/Salaries for the month under report were amounted to 1496 Million Rupees.

PRODUCTION OF UREA

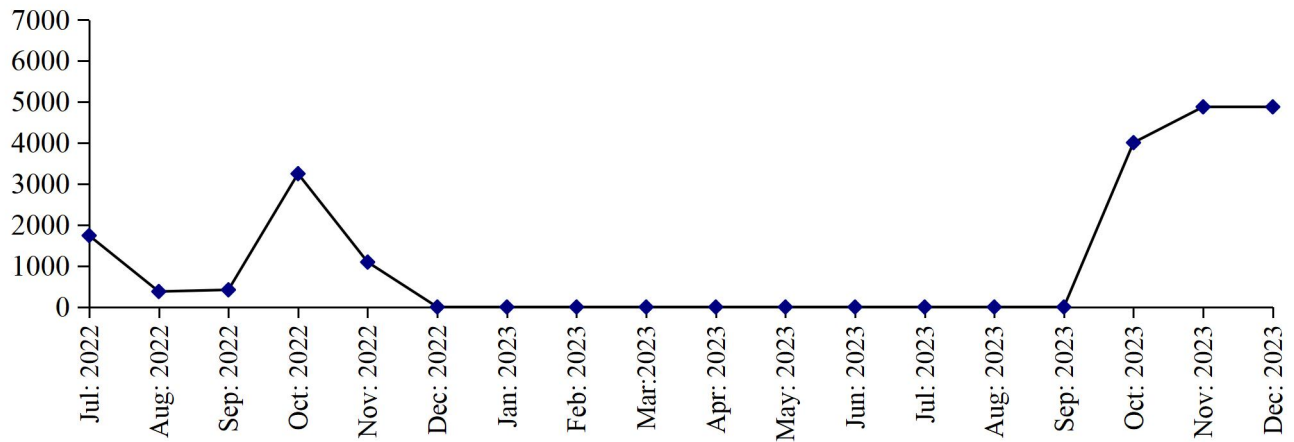
July 2022 to January 2024

(000 M. Tons)



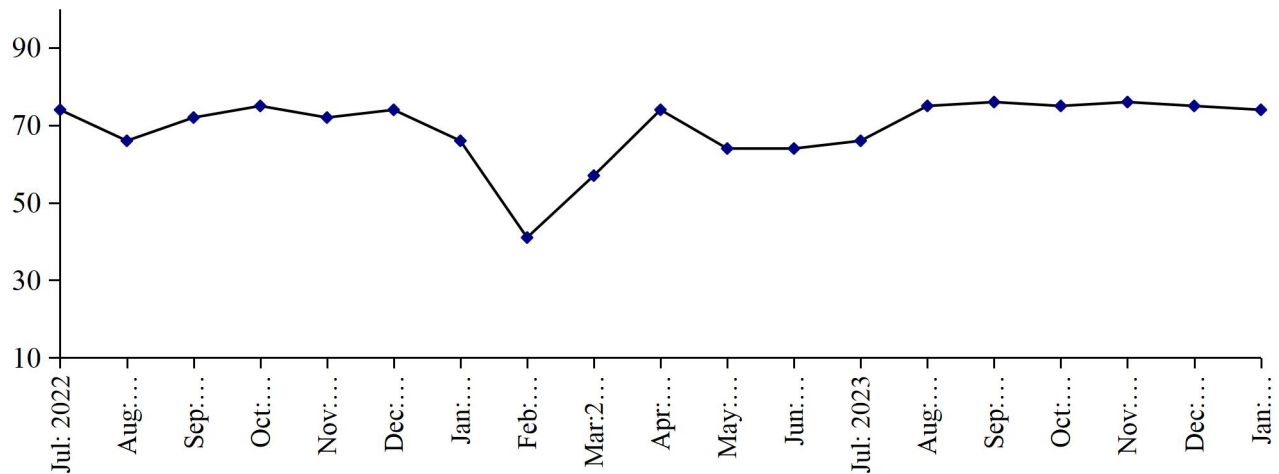
PRODUCTION OF SUPER PHOSPHATE

(000 M. Tons) July 2022 to January 2024



PRODUCTION OF AMM. NITRATE

(000 M. Tons) July 2022 to January 2024



PRODUCTION OF NITRO PHOSPHATE

(000 M. Tons) July 2022 to January 2024

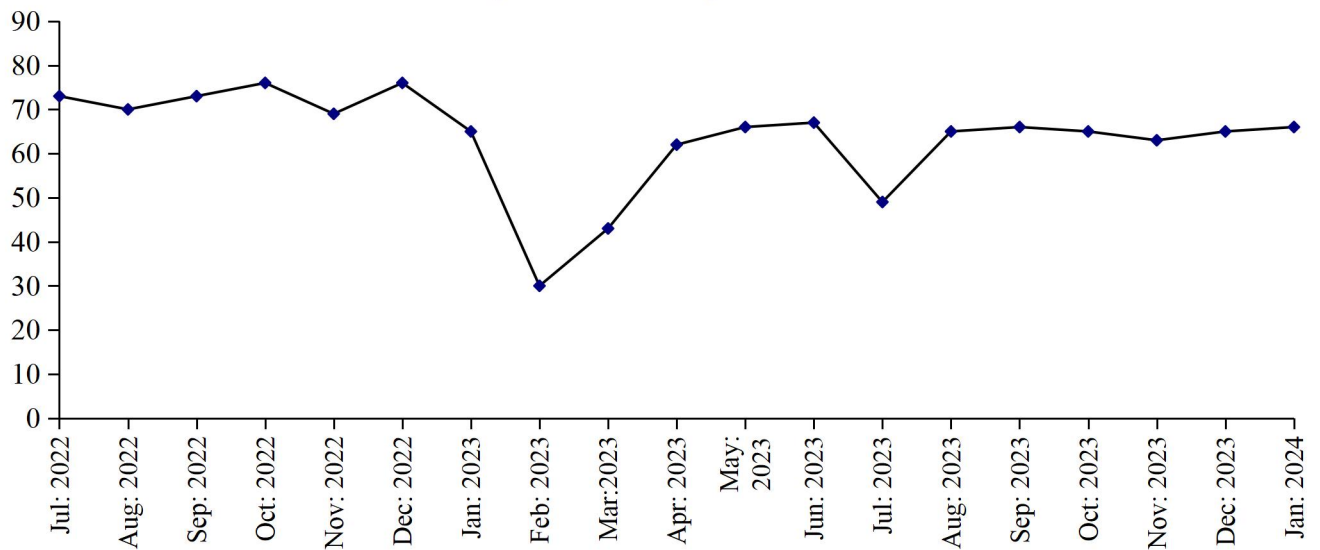


Table No: 25 DETAIL OF PRODUCTION, SALE AND STOCK OF UREA AND AMM. SULPHATE

(M. Tons)

Year (July-June)/ Month	U R E A			AMM. SULPHATE		
	Production	Sale	Stock at The end	Production	Sale	Stock at the end
2007-08	3274090	3553613	42320	-	-	-
2008-09	3377275	3404025	15570	-	-	-
2009-10	3431545	3374056	73059	-	-	-
2010-11	3016783	3064387	25455	-	-	-
2011-12	2750392	2701061	74786	-	-	-
2012-13	2592718	2639313	28191	-	-	-
2013-14	2582330	2539991	70530	-	-	-
2014-15	2459980	2505550	24960	-	-	-
2015-16	2856143	2392405	488698	-	-	-
2016-17	2808518	2895909	401307	-	-	-
2017-18	2987690	3367935	21062	-	-	-
2018-19	3181203	3133449	68816	-	-	-
2019-20	3201765	3251695	18886	-	-	-
2020-21	3268768	3132828	154826	-	-	-
2021-22	3381465	3514260	22031	-	-	-
2022-23	3280655	3190837	111849	-	-	-
(Jul: – Jan:)	<u>1922291</u>	<u>1922539</u>	<u>54783</u>	=	=	=
Jul:	227313	201455	47889	-	-	-
Aug:	248817	258546	38160	-	-	-
Sep:	292779	283832	47107	-	-	-
Oct:	292032	291161	47978	-	-	-
Nov:	284606	309337	23247	-	-	-
Dec:	303961	311694	15514	-	-	-
Jan:	272783	266514	21783	-	-	-
Feb:	240385	241208	20960	-	-	-
Mar:	260230	262728	18462	-	-	-
Apr:	299647	208098	110011	-	-	-
May	269999	254444	125566	-	-	-
June	288103	301820	111849	-	-	-
<u>2023-24</u>						
(Jul: – Jan:)	<u>2143639</u>	<u>2215348</u>	<u>39821</u>	=	=	=
Jul:	305490	333037	83983	-	-	-
Aug:	300678	334262	50399	-	-	-
Sep:	299915	318181	32133	-	-	-
Oct:	289556	288661	33028	-	-	-
Nov:	312546	310221	35353	-	-	-
Dec:	317452	315365	37440	-	-	-
Jan:	318002	315621	39821	-	-	-

Table No:26 DETAIL OF PRODUCTION, SALE AND STOCK OF SUPER PHOSPHATE AND AMM. NITRATE
(M. Tons)

Year (July-June)/ Month	SUPER PHOSPHATE			AMM. NITRATE		
	Production	Sale	Stock at The end	Production	Sale	Stock at the end
2007-08	83146	78492	12758	343728	349559	8
2008-09	89171	75025	26904	344334	339921	4421
2009-10	46952	56524	17332	345735	330963	19193
2010-11	126909	137940	6301	298029	307696	9526
2011-12	123294	90442	39153	228664	227808	10382
2012- 13	44638	42997	40794	26574	36898	58
2013-14	10081	29493	21382	119631	119539	150
2014-15	18706	25502	14586	113541	65804	47887
2015-16	28023	33404	9205	237844	169639	116092
2016-17	23815	9546	23474	226183	328008	14267
2017-18	1027	23807	694	553091	532829	34529
2018-19	18244	18828	110	456249	487629	3149
2019-20	9034	9122	22	548571	544771	6949
2020-21	31087	28244	2865	756461	762169	1241
2021-22	28780	25353	6292	821680	819768	3153
2022-23	6884	5356	7820	799008	800476	1685
(Jul: – Jan:)	<u>6884</u>	<u>5099</u>	<u>8078</u>	<u>498121</u>	<u>499433</u>	<u>373</u>
Jul:	1742	1597	6437	74324	71321	6156
Aug:	378	378	6437	65792	67150	4798
Sep:	419	419	6437	71617	66065	10350
Oct:	3250	2257	7430	74824	76434	8740
Nov:	1095	179	8346	71927	77839	2828
Dec:	-	3	8343	73599	75964	463
Jan:	-	266	8078	66038	66128	373
Feb:	-	130	7947	41081	41081	373
Mar:	-	114	7833	57015	55703	1685
Apr:	-	14	7820	74016	74016	1685
May	-	-	7820	64449	64449	1685
Jun:	-	-	7820	64326	64326	1685
<u>2023-24</u>						
(Jul: – Jan:)	<u>13765</u>	<u>18772</u>	<u>1136</u>	<u>517403</u>	<u>518368</u>	<u>720</u>
Jul:	-	991	6829	66126	66126	1685
Aug:	-	1776	5053	75261	75606	1340
Sep:	-	500	4554	76191	76796	735
Oct:	4007	2356	4527	75159	75159	735
Nov:	4879	4125	5281	75899	75938	696
Dec:	4879	4125	6035	74587	74628	655
Jan:	-	4899	1136	74180	74115	720

Table No: 27 DETAIL OF PRODUCTION, SALE AND STOCK OF NITRO PHOSPHATE.

(M.Tons)

Year (July-June)/ Month	Production	Sale	Stock at the end
2007-08	329655	267704	62031
2008-09	305678	362938	4771
2009-10	304444	286441	22774
2010-11	265490	287894	370
2011-12	198799	198818	351
2012- 13	22109	22460	0
2013-14	122494	122478	16
2014-15	101171	93467	7720
2015-16	221059	228779	0
2016-17	274512	269570	4942
2017-18	455002	459944	0
2018-19	449667	449667	0
2019-20	624396	615632	8764
2020-21	845493	846511	7746
2021-22	835140	832990	9896
2022-23	770063	778152	1807
(Jul: - Jan:)	<u>502055</u>	<u>503191</u>	<u>8760</u>
Jul:	72715	62971	19640
Aug:	70175	73435	16380
Sep:	73067	71495	17952
Oct:	76121	79819	14254
Nov:	69087	66792	16549
Dec:	76302	77001	15850
Jan:	64588	71678	8760
Feb:	30185	30185	8760
Mar:	42805	51072	493
April:	61807	60948	1352
May:	66038	65834	1556
June:	67173	66922	1807
<u>2023-24</u>			
(Jul: - Jan:)	<u>460710</u>	<u>462097</u>	<u>420</u>
Jul:	69499	69248	2058
Aug:	65135	66324	869
Sep:	66055	65963	961
Oct:	65297	65963	295
Nov:	63254	63523	26
Dec:	65471	65274	223
Jan:	65999	65802	420

Table No: 28 EMPLOYMENT AND WAGES/SALARIES OF FERTILIZER INDUSTRY*

Year (July-June) / Month	No. Of Working Units	E M P L O Y M E N T (Nos.)*			WAGES/SALARIES (000 Rs.)	
		Total	Production Workers	Office Staff	Total	Production Workers
2007-08	6	4587	3277	1310	175821	113661
2008-09	5	4710	3316	1394	209439	132521
2009-10	5	4878	3388	1490	273098	166113
2010-11	6	5161	3496	1665	310502	181462
2011-12	6	5407	3671	1736	353344	207054
2012-13	6	5136	3469	1667	363237	210167
2013-14	6	4720	3121	1599	395486	224472
2014-15	6	5090	3015	2075	433858	222449
2015-16	6	5473	3070	2403	489752	235912
2016-17	6	5260	3045	2215	494139	260682
2017-18	7	6020	3616	2404	545307	287497
2018-19	7	6141	3663	2478	573893	295543
2019-20	7	5714	3443	2270	600079	321309
2020-21	7	5700	3590	2110	638195	355515
2021-22	7	5567	3647	1920	743477	417103
2022-23	7	5475	3516	1959	938617	494865
(Jul: - Jan:)	<u>7</u>	<u>5536</u>	<u>3605</u>	<u>1936</u>	<u>909766</u>	<u>490257</u>
Jul:	7	5570	3420	2150	800181	435263
Aug:	7	5534	3736	1798	963632	535843
Sep:	7	5541	3738	1803	965414	538102
Oct:	7	5545	3666	1879	940200	518170
Nov:	7	5611	3665	1946	938432	507671
Dec:	7	5515	3554	1961	846617	433398
Jan:	7	5434	3415	2019	913884	463343
Feb:	7	5418	3403	2015	932003	469248
Mar:	7	5391	3403	1988	962530	492160
Apr:	7	5376	3395	1981	993998	476368
May	7	5382	3397	1985	1003258	534407
Jun:	7	5386	3404	1982	1003260	534410
<u>2023-24</u>						
(Jul: - Jan:)	<u>7</u>	<u>5439</u>	<u>3423</u>	<u>2016</u>	<u>1169580</u>	<u>625016</u>
Jul:	7	5395	3413	1983	1025644	451525
Aug:	7	5396	3412	1984	1040464	546108
Sep:	7	5400	3416	1984	1040646	546108
Oct:	7	5450	3414	2036	1040604	546108
Nov:	7	5460	3417	2043	1042908	547200
Dec:	7	5465	3420	2045	1492000	599212
Jan:	7	5507	3464	2043	1495587	611439

* = Monthly averages over the seven months.

PERFORMANCE OF FOOTWEAR INDUSTRY

Report for the month of January 2024

Coverage

This report covers Forty One (41) factories of Footwear Industry in the Punjab Province.

Production

The factories produced 2960 thousand Pairs of Footwear during the current month, which was 2.0% higher than the previous month.

Employment

Total employment in these factories during the current month was 12693, which was same as the previous month. Out of this total employment, 9378ere production workers.

PRODUCTIN OF FOOTWEAR

July 2022 to January 2024

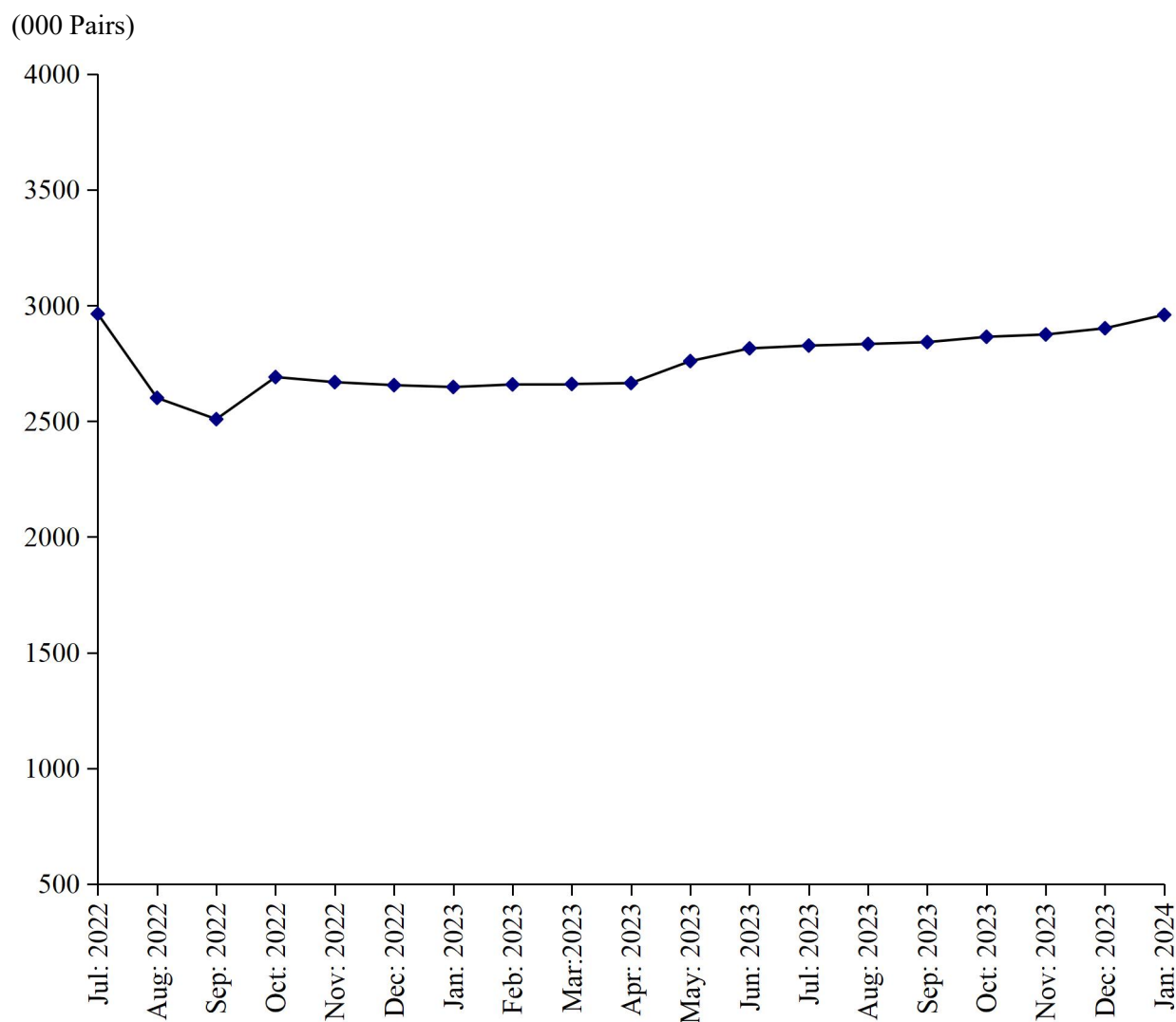


Table No.29 MANUFACTURING ACTIVITY OF FOOTWEAR INDUSTRY

Year (July-June)/ Month	No. Of Reporting Units	Production Of Footwear (000) Pairs)	EMPLOYMENT (NOS.) *	
			Total	Production Workers
2007-08	16	26865	8592	6928
2008-09	16	30979	8521	7038
2009-10	16	34817	8667	7152
2010-11	40	41008	9699	8116
2011-12	40	41944	9719	8535
2012-13	40	43232	9997	8536
2013-14	40	45030	9967	7937
2014-15	40	55136	9523	7398
2015-16	40	60462	10350	7959
2016-17	41	45476	9778	7401
2017-18	41	37411	9758	7477
2018-19	41	38805	9844	7783
2019-20	41	37860	10346	8451
2020-21	41	25658	10158	7745
2021-22	41	29843	11939	9145
2022-23	41	32298	12422	9367
(Jul: – Jan:)	41	18738	12395	9386
Jul:	41	2964	12468	9476
Aug:	41	2601	12235	9322
Sep:	41	2509	12014	9306
Oct:	41	2691	12583	9469
Nov:	41	2669	12571	9462
Dec:	41	2656	12452	9338
Jan:	41	2648	12440	9326
Feb:	41	2659	12454	9332
Mar:	41	2661	12458	9339
Apr:	41	2665	12452	9343
May	41	2760	12468	9349
June	41	2815	12470	9345
<u>2023-24</u>				
(Jul: – Jan:)	41	20105	12577	9357
July	41	2827	12467	9342
Aug:	41	2834	12467	9342
Sep:	41	2842	12567	9348
Oct:	41	2865	12575	9351
Nov:	41	2875	12580	9360
Dec:	41	2902	12690	9375
Jan:	41	2960	12693	9378

* = Monthly Average over the Seven months.

PERFORMANCE OF LEATHER TANNING INDUSTRY

Report for the month of January 2024

Coverage

The report for the month covers one Hundred and Six (106) Tanneries working in the Punjab Province.

Production

These Tanneries produced 800 thousand Sq. Mtrs. of Upper Leather and 14 M. Tons of Sole Leather during the current month. The Production of Upper Leather during the month was 0.1% higher than the previous month.

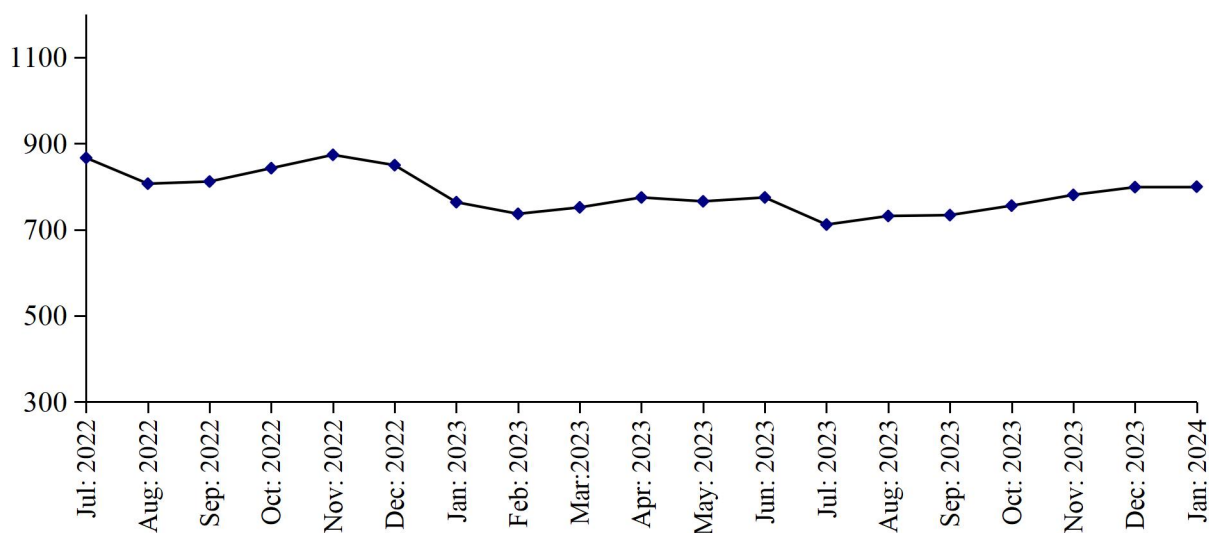
Employment

Total employment in these factories was 2326 persons which was 0.1% lower than the last month. Out of this total employment 1652 persons were production workers.

PRODUCTION OF UPPER LEATHER

July 2022 to January 2024

(000 Sq. Mtrs)



PRODUCTION OF SOLE LEATHER

July 2022 to January 2024

(000 M. Tons)

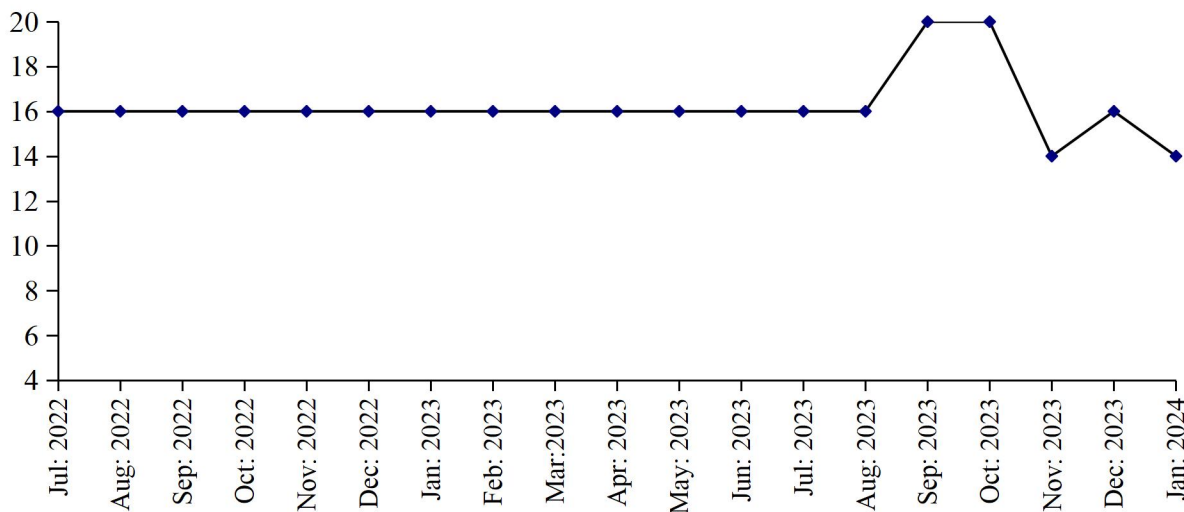


Table No: 30: MANUFACTURING ACTIVITY OF LEATHER TANNING INDUSTRY

Year (July-June) / Month	No. Of Reporting Units	P R O D U C T I O N		EMPLOYMENT (NOS.) *	
		Upper Leather (000 Sq. Mtrs)	Sole Leather (M. Tons)	Total	Production Workers
2007-08	19	5833	99	1294	919
2008-09	19	5980	156	1195	910
2009-10	60	10465	215	1711	1325
2010-11	100	12999	381	2234	1813
2011-12	100	11154	417	2133	1709
2012-13	100	10169	356	1824	1318
2013-14	100	10766	287	2404	1703
2014-15	100	10071	241	2539	1821
2015-16	100	9563	198	2550	1935
2016-17	106	10330	156	2956	2174
2017-18	107	11150	168	3071	2248
2018-19	107	11045	168	2938	2135
2019-20	108	9340	168	2787	2006
2020-21	108	7956	168	2467	1755
2021-22	106	8852	176	2261	1591
2022-23	106	9622	192	2245	1612
(Jul: – Jan:)	<u>106</u>	<u>5817</u>	<u>112</u>	<u>2226</u>	<u>1624</u>
Jul:	106	867	16	2243	1629
Aug:	106	807	16	2215	1605
Sept:	106	812	16	2215	1605
Oct:	106	843	16	2235	1665
Nov:	106	874	16	2235	1672
Dec:	106	850	16	2213	1582
Jan:	106	764	16	2225	1613
Feb:	106	737	16	2205	1592
Mar:	106	752	16	2203	1590
Apr:	106	775	16	2313	1599
May	106	766	16	2316	1594
Jun:	106	775	16	2319	1597
<u>2023-24</u>					
(Jul: – Jan:)	<u>106</u>	<u>5314</u>	<u>116</u>	<u>2308</u>	<u>1631</u>
Jul:	106	712	16	2273	1594
Aug:	106	732	16	2293	1610
Sep:	106	734	20	2302	1621
Oct:	106	756	20	2317	1640
Nov:	106	781	14	2320	1648
Dec:	106	799	16	2328	1653
Jan:	106	800	14	2326	1652

* = Monthly average over the seven months.

PERFORMANCE OF PAPER & PAPER BOARD INDUSTRY

Report for the month of January 2024

Coverage

This report covers forty seven (47) factories of Paper & Paper Board Industries in the Punjab Province.

Production

Forty eight factories produced 22090 Metric Tons of paper, which comprises of 9510 Metric Tons of writing, 6931 Metric Tons of printing and 5649 Metric Tons of packing and other 35205 Metric Tons of paper board during the month. The production of paper and paper board was 6.4% higher and 1.4% lower than the last month respectively.

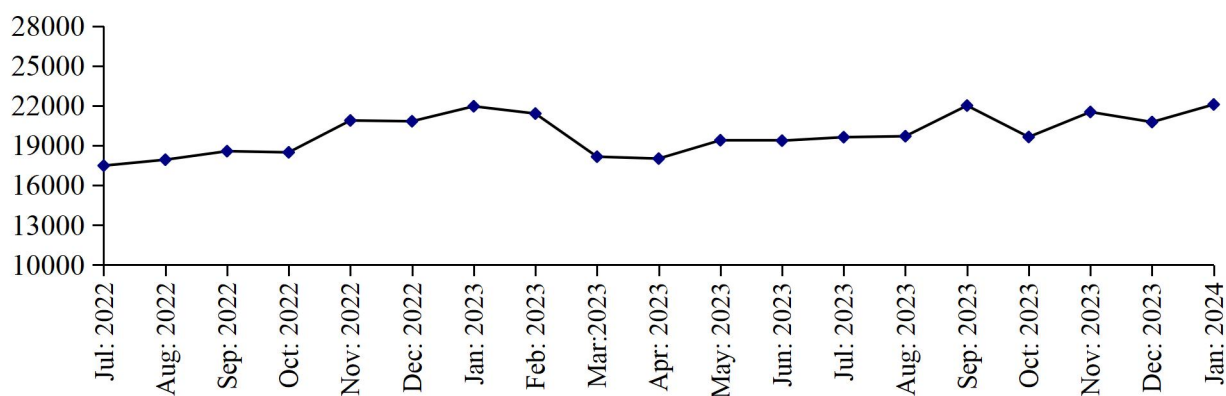
Employment

Total employment during the month was 5112 persons, which was 0.1% higher than the last month. Out of this total employment, 3697 were production workers.

PRODUCTION OF PAPER & PAPER BOARD

July 2022 to January 2024

(M. Tons)



(M. Tons)

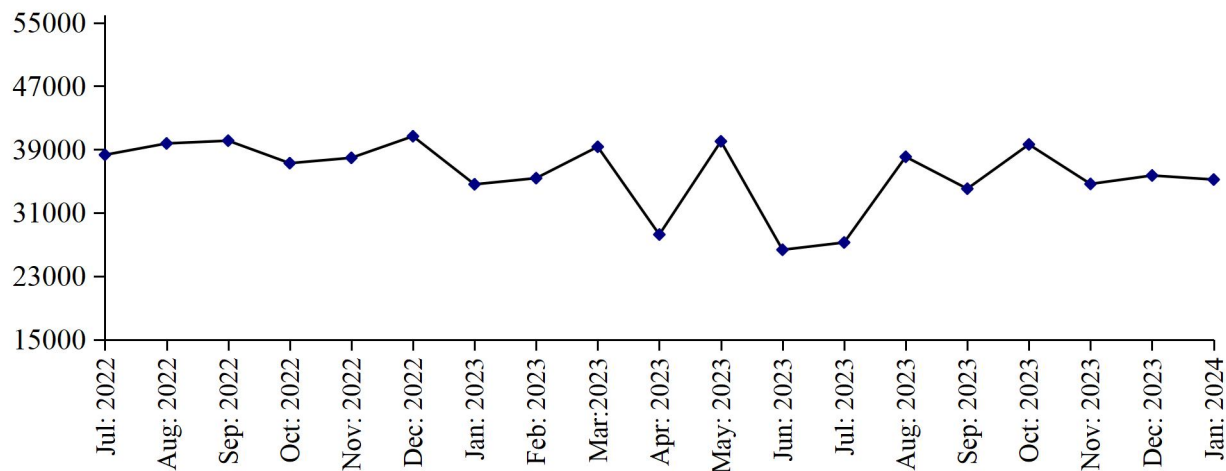


Table No: 31 MANUFACTURING ACTIVITY OF PAPER & PAPER BOARD INDUSTRY.

Year (July-June)/ Month	No. Of Reporting Units	P R O D U C T I O N (M.Tons)			EMPLOYMENT (NOS.) *	
		Paper	Paper Board	Paper & Paper Board	Total	Production Workers
2007-08	34	180162	223883	404045	5532	4218
2008-09	34	244838	165797	410635	5835	4845
2009-10	41	240775	165269	406044	5398	4178
2010-11	41	220587	194084	414671	5787	3945
2011-12	41	236217	287645	523862	5403	3539
2012-13	43	218980	376138	595118	5702	3774
2013-14	43	205252	457794	663046	6031	4053
2014-15	46	190193	407658	597851	6086	4370
2015-16	50	219040	370427	589467	6169	4629
2016-17	49	226251	398950	625201	6065	4614
2017-18	48	237723	451717	689440	6130	4570
2018-19	47	225544	429716	655260	5567	4052
2019-20	47	220495	441640	662135	5112	3683
2020-21	47	191962	488542	680504	5101	3660
2021-22	47	204434	526353	730787	5026	3600
2022-23	47	232450	438353	670803	5102	3653
(Jul: – Jan:)	<u>47</u>	<u>136123</u>	<u>268994</u>	<u>405117</u>	<u>5093</u>	<u>3631</u>
Jul:	47	17481	38625	56106	5036	3596
Aug:	47	17928	39762	57690	5090	3625
Sep:	47	18570	40112	58682	5090	3625
Oct:	47	18482	37273	55755	5105	3633
Nov:	47	20884	37948	58832	5114	3646
Dec:	47	20825	40670	61495	5114	3647
Jan:	47	21953	34604	56557	5099	3647
Feb:	47	21405	35382	56787	5096	3651
Mar:	47	18154	39340	57494	5116	3687
Apr:	47	18012	28264	46276	5111	3679
May	47	19393	40031	59424	5133	3705
Jun:	47	19363	26342	45705	5116	3693
<u>2023-24</u>						
(Jul: – Jan:)	<u>47</u>	<u>145349</u>	<u>244601</u>	<u>389950</u>	<u>5051</u>	<u>3710</u>
Jul:	47	19625	27261	46886	5109	3688
Aug:	47	19697	38076	57773	5402	3838
Sep:	47	22007	34049	56056	5108	3688
Oct:	47	19640	39637	59277	5114	3693
Nov:	47	21525	34653	56178	5104	3686
Dec:	47	20765	35720	56485	5107	3680
Jan:	47	22090	35205	57295	5112	3699

* = Monthly average over the seven months.

PERFORMANCE OF LIGHT ENGINEERING INDUSTRY

Report for the month of January 2024

RE-ROLLED STEEL

Coverage

This report covers Forty One (41) factories of Re-Rolled Steel in the Punjab Province.

Production

Forty one factories covered under the survey produced 22101 Metric Tons of steel bars/angles during January 2024, which was 0.4% higher than the last month.

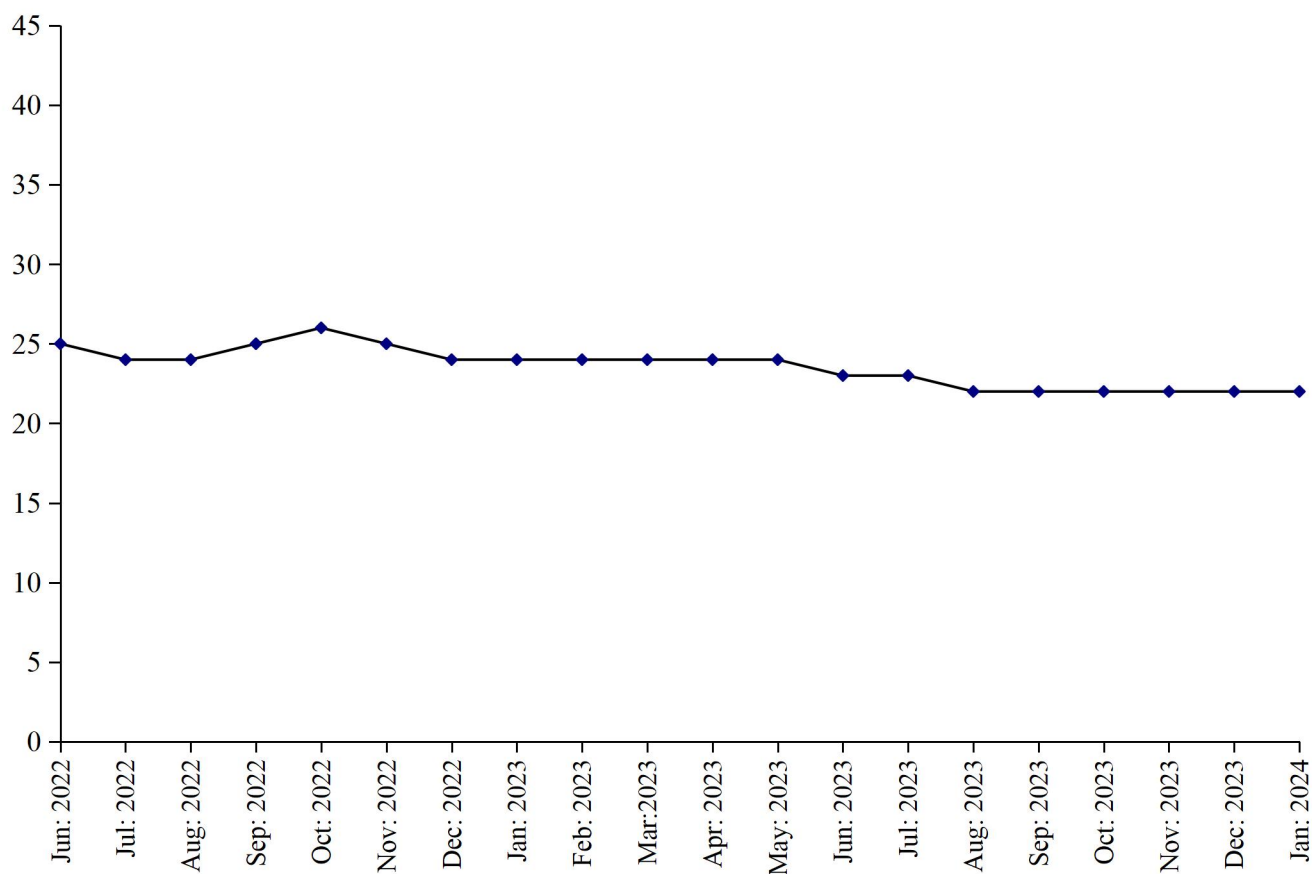
Employment

Total employment in the industry during the month was 1083, which is 0.1% higher than the last month. Out of this total employment, 775 were production workers.

PRODUCTION OF RE-ROLLED STEEL

July 2022 to January 2024

(000 M. Tons)



BICYCLES

Coverage

This report covers three (3) factories of Bicycles in the Punjab.

Production

Three factories being covered in the survey manufactured and assembled 13214 complete bicycles during January 2024, which was 0.5% higher than the last month.

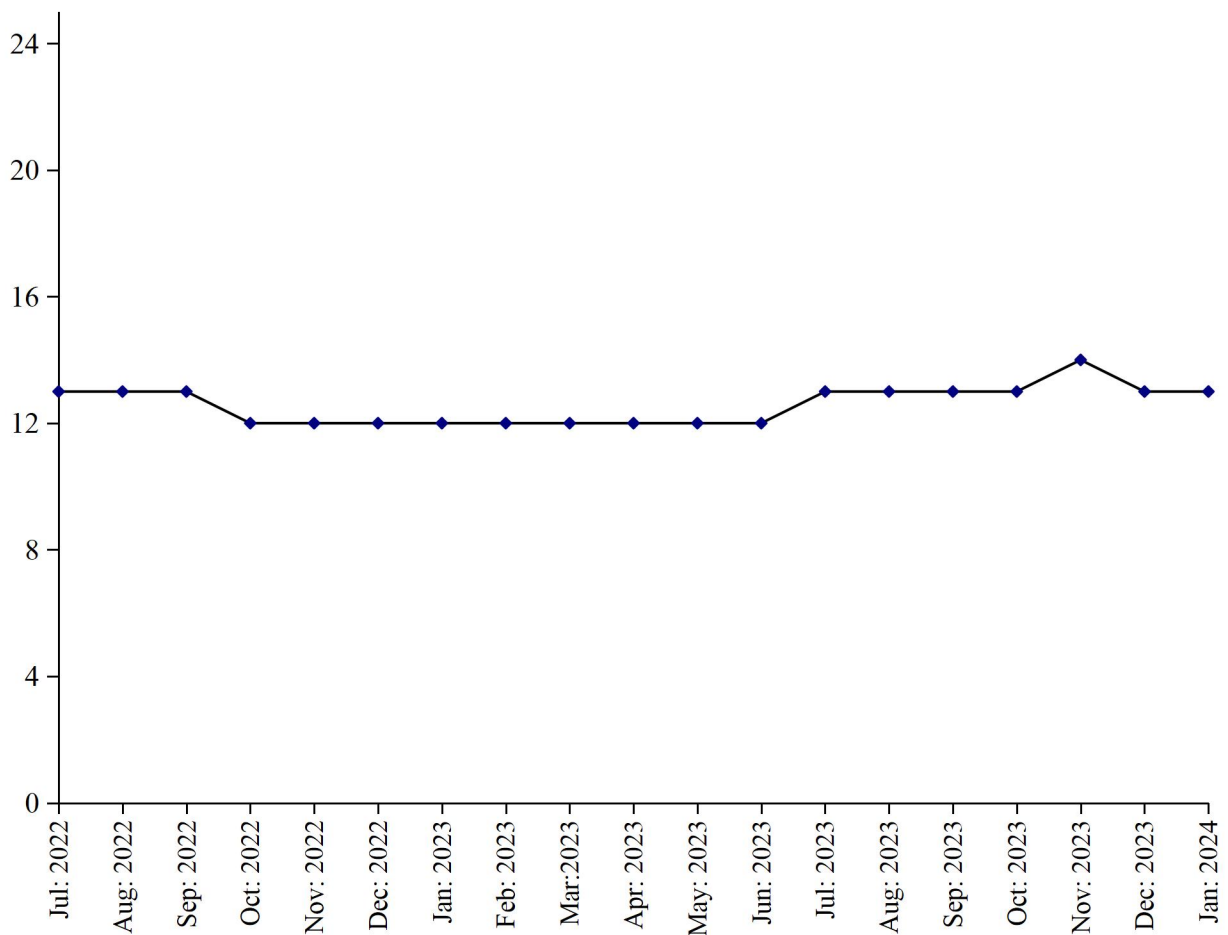
Employment

Total employment in these factories during the month was 686, which was same as the last month. Out of this total employment, 527 were production workers.

PERFORMANCE OF BICYCLES

July 2022 to January
2024

(000 M. Tons)



ELECTRIC FANS

Coverage

This report covers one hundred and twenty six (126) factories of Electric Fans in the Punjab Province.

Production

One hundred and twenty six factories covered under the survey manufactured 148714 (ceiling fans, 86164 pedestal fans, 22416 and other fans 40134) during January 2024 which was 1.0% lower than the last month.

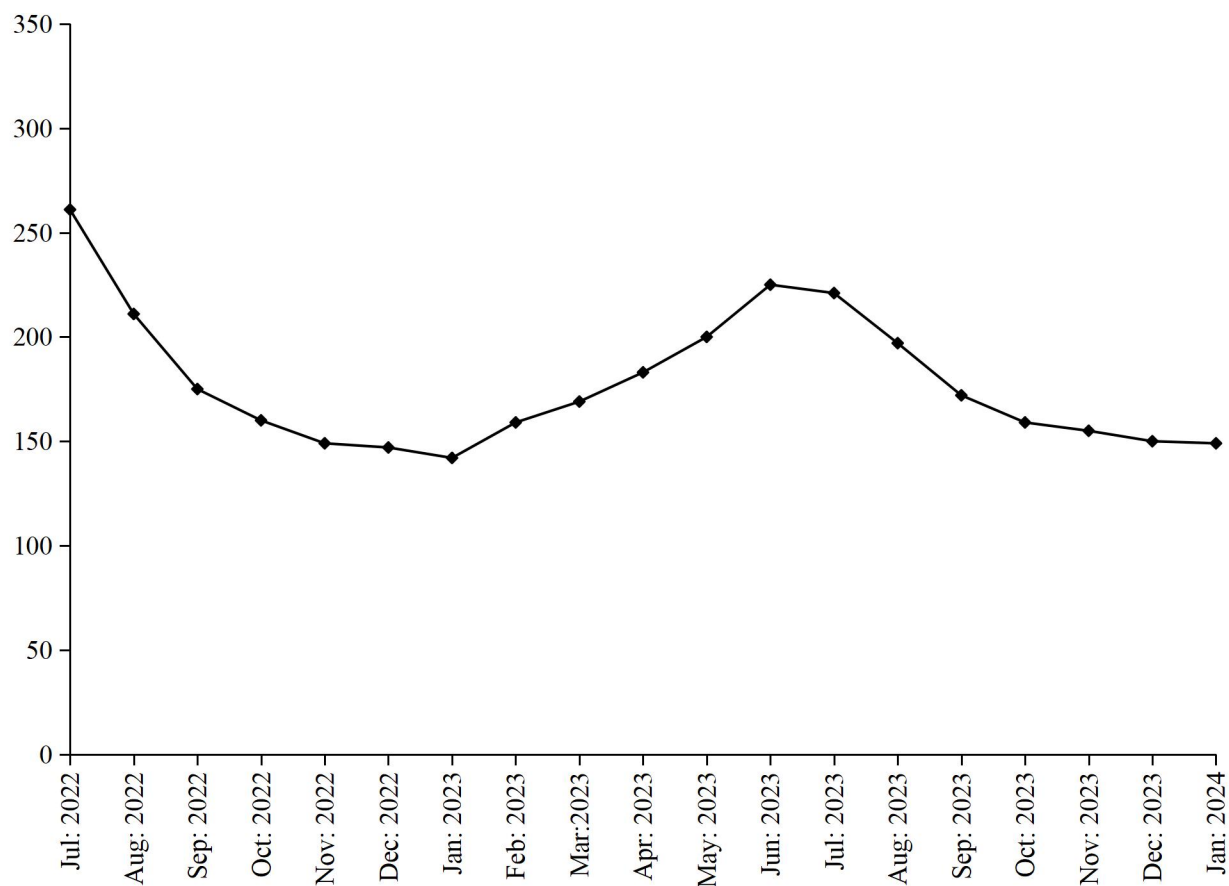
Employment

These factories reported 2142 total employment during the month, which was 0.2% higher than the last month. Out of this total employment, 1685 were production workers.

PERFORMANCE OF ELECTRIC FANS

July 2022 to January 2024

(000 Nos.)



ELECTRIC MOTORS

Coverage

This report covers thirty (30) factories of Electric Motors in the Punjab Province.

Production

Thirty factories covered under the survey manufactured 1359 electric motors during the month, which was 0.2% lower than the last month.

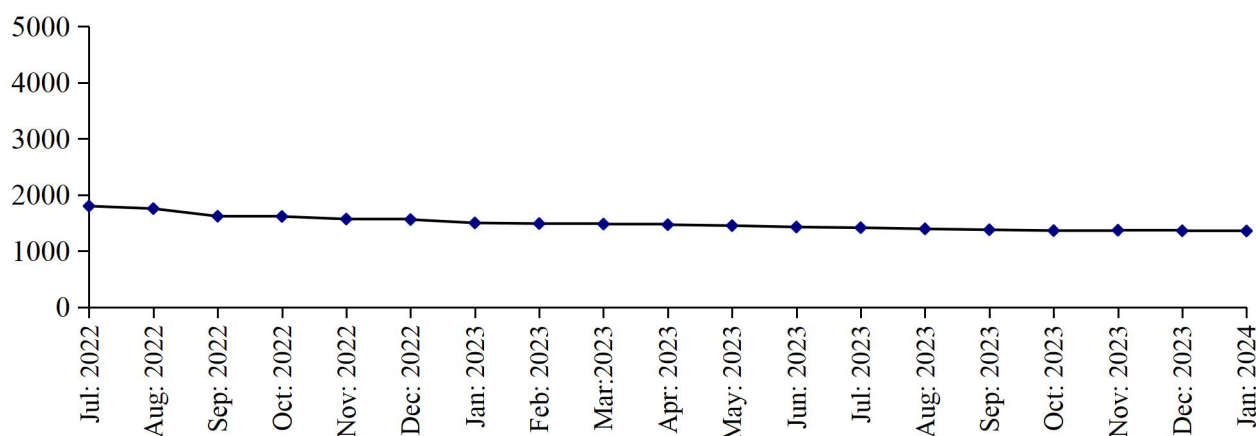
Employment

Total Employment in these factories during the month which was 163, which is same as the last month. Out of this total employment, 137 were production workers.

PRODUCTION OF ELECTRIC MOTORS

(Nos.)

July 2022 to January 2024



DIESEL ENGINES

Coverage

This report covers fifteen (15) factories of Diesel Engines in the Punjab Province.

Production

These fifteen factories covered under the survey and 126 complete diesel engines manufactured during the month, which was 1.6% lower than the last month.

Employment

Total employment in these factories during the month was 24, which is same as it was in previous month. Out of this total employment, 15 were production workers.

PRODUCTION OF DIESEL ENGINES

(Nos.)

July 2022 to January 2024

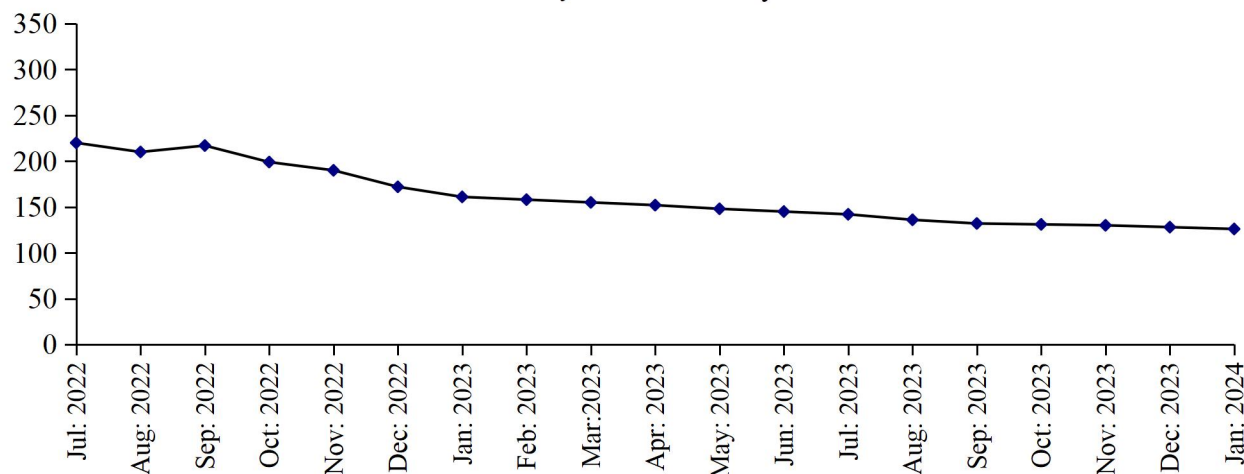


Table No: 32 MANUFACTURINGACTIVITYOFLIGHT ENGINEERING INDUSTRY

Year (July – June) / Month	Re-rolled Steel Bars / Angles (M. Tons)	Bicycles (Nos.)	Electric Fans (Nos.)	Electric Motors (Nos.)	Diesel Engines (N0s.)
2007-08	411062	535519	1654165	5818	18952
2008-09	343506	419897	1697140	6604	16906
2009-10	321369	447207	2128884	7068	20157
2010-11	312433	345272	1940346	7667	10285
2011-12	289874	262096	1858883	5857	2861
2012-13	266669	232979	1909412	5752	2219
2013-14	257569	206459	1870475	9906	2117
2014-15	264406	210931	1870291	9013	2045
2015-16	320769	198966	1970506	7319	495
2016-17	367619	200218	2461369	9206	1554
2017-18	485131	202168	2498919	41793	1120
2018-19	382890	173545	2508085	56819	908
2019-20	289350	141125	2124301	39312	1294
2020-21	312922	79310	2498634	30054	1644
2021-22	308749	141236	2589903	22832	1941
2022-23	292280	146454	2181562	18756	2127
(Jul: – Jan:)	<u>172884</u>	<u>87128</u>	<u>1245712</u>	<u>11432</u>	<u>1369</u>
Jul:	24423	13007	261144	1802	220
Aug:	24411	13000	211119	1757	210
Sep:	25017	12519	174917	1621	217
Oct:	26077	12409	160121	1617	199
Nov:	24861	12301	149299	1571	190
Dec:	24006	12102	147102	1562	172
Jan:	24089	11799	142010	1502	161
Feb:	24050	11687	158917	1490	158
Mar:	24302	11809	168992	1481	155
Apr:	23650	11915	182919	1470	152
May	23989	11902	199906	1454	148
Jun:	23405	12004	225116	1429	145
<u>2023-24</u>					
(Jul: – Jan:)	<u>155329</u>	<u>90752</u>	<u>1203116</u>	<u>9651</u>	<u>925</u>
Jul:	23257	142581	220916	1417	142
Aug:	22105	12698	196778	1396	136
Sep:	21865	12961	172135	1380	132
Oct:	21822	13061	159472	1365	131
Nov:	21899	13089	154947	1372	130
Dec:	22010	13145	150154	1362	128
Jan:	22101	13214	148714	1359	126

Table No: 33 TOTAL EMPLOYMENT (Nos.) OF LIGHT ENGINEERING INDUSTRY*

Year (July – June)/ Month	Re-rolled Steel Bars / Angles (M.Tons)	Bicycles (Nos.)	Electric Fans (Nos.)	Electric Motors (Nos.)	Diesel Engines (N0s.)
2007-08	1106	2160	1881	72	199
2008-09	1103	2257	1894	69	200
2009-10	1134	2124	2124	63	223
2010-11	1218	2009	2120	64	191
2011-12	1193	1612	2351	64	155
2012-13	1188	1318	2172	58	147
2013-14	1269	1214	2307	64	154
2014-15	1299	1060	2208	63	154
2015-16	1317	907	2090	65	150
2016-17	1372	885	2325	121	146
2017-18	1310	883	2549	130	133
2018-19	1304	759	2673	158	52
2019-20	1013	751	1817	191	22
2020-21	1067	686	2141	197	20
2021-22	1077	686	2229	213	21
2022-23	1091	686	2092	174	24
(Jul: - Jan:)	<u>1099</u>	<u>686</u>	<u>2135</u>	<u>183</u>	<u>24</u>
Jul:	1070	686	2210	192	24
Aug:	1067	686	2188	190	24
Sep:	1097	686	2144	188	24
Oct:	1113	686	2130	184	24
Nov:	1106	686	2102	178	24
Dec:	1091	686	2020	173	24
Jan:	1093	686	2000	170	24
Feb:	1095	686	2019	168	24
Mar:	1097	686	2040	166	24
Apr:	1090	686	2060	164	24
May	1082	686	2088	161	24
Jun:	1080	686	2094	160	24
<u>2023-24</u>					
(Jul: - Jan:)	<u>1082</u>	<u>686</u>	<u>2132</u>	<u>163</u>	<u>24</u>
Jul:	1081	686	2100	163	24
Aug:	1081	686	2068	163	24
Sep:	1085	686	2183	163	24
Oct:	1081	686	2160	163	24
Nov:	1078	686	2133	163	24
Dec:	1082	686	2137	163	24
Jan:	1083	686	2142	163	24

* = Monthly averages over the seven months.

Table No: 34 PRODUCTION WORKERS (Nos.) OF LIGHT ENGINEERING INDUSTRY *

Year (July – June)/ Month	Re-rolled Steel Bars / Angles (M.Tons)	Bicycles (Nos.)	Electric Fans (Nos.)	Electric Motors (Nos.)	Diesel Engines (Nos.)
2007-08	780	1900	1545	62	157
2008-09	757	1905	1542	60	160
2009-10	782	1892	1748	57	154
2010-11	870	1843	1709	57	126
2011-12	857	1540	1904	57	99
2012-13	843	1289	1761	50	95
2013-14	905	1161	1850	55	99
2014-15	920	992	1745	54	100
2015-16	934	836	1658	56	97
2016-17	976	820	1865	113	93
2017-18	926	804	1994	119	86
2018-19	916	696	2066	122	34
2019-20	706	679	1425	147	15
2020-21	780	527	1735	151	14
2021-22	786	527	1815	157	16
2022-23	798	527	1823	145	16
(July – Jan:)	<u>795</u>	<u>527</u>	<u>1839</u>	<u>149</u>	<u>16</u>
Jul:	773	527	1899	154	16
Aug:	770	527	1886	152	16
Sep:	784	527	1871	150	16
Oct:	819	527	1862	150	16
Nov:	815	527	1805	147	16
Dec:	801	527	1780	145	16
Jan:	804	527	1770	142	16
Feb:	805	527	1790	140	16
Mar:	807	527	1802	140	16
Apr:	802	527	1840	140	16
May	802	527	1790	139	16
Jun:	801	527	1798	140	16
<u>2023-24</u>					
(July – Jan:)	<u>778</u>	<u>527</u>	<u>1715</u>	<u>137</u>	<u>16</u>
Jul:	802	527	1765	137	16
Aug:	802	527	1737	137	16
Sep:	774	527	1726	137	16
Oct:	774	527	1705	137	16
Nov:	771	527	1701	136	16
Dec:	775	527	1683	137	16
Jan:	775	527	1685	137	16

* = Monthly averages over the seven months.

PERFORMANCE OF PHARMACEUTICAL INDUSTRY

Report for the month of January 2024

Coverage

This report covers thirty six (36) Pharmaceutical Industries in the Punjab Province.

Production

Overall production of these 36 pharmaceutical factories during the month was 0.6% and 14.1% higher than January, 2024 and January 2023 respectively.

These factories produced 302102 thousand Nos. of Tablets, 1864 thousand Ltrs., of Liquids/Syrups, 48187 thousand Nos. of Capsules, 14671 thousand Nos. of Injections, 52110 kgs. of Ointments and 2 thousand Ltrs. of Galanicals (Tincture/Spirits). The production of Tablets Injections and Ointment was 1.1%, 0.6% and 1.3% higher whereas the production of Liquids, Capsules and Galanicals was 0.8%, 3.4%, and 33.3% lower than the last month respectively.

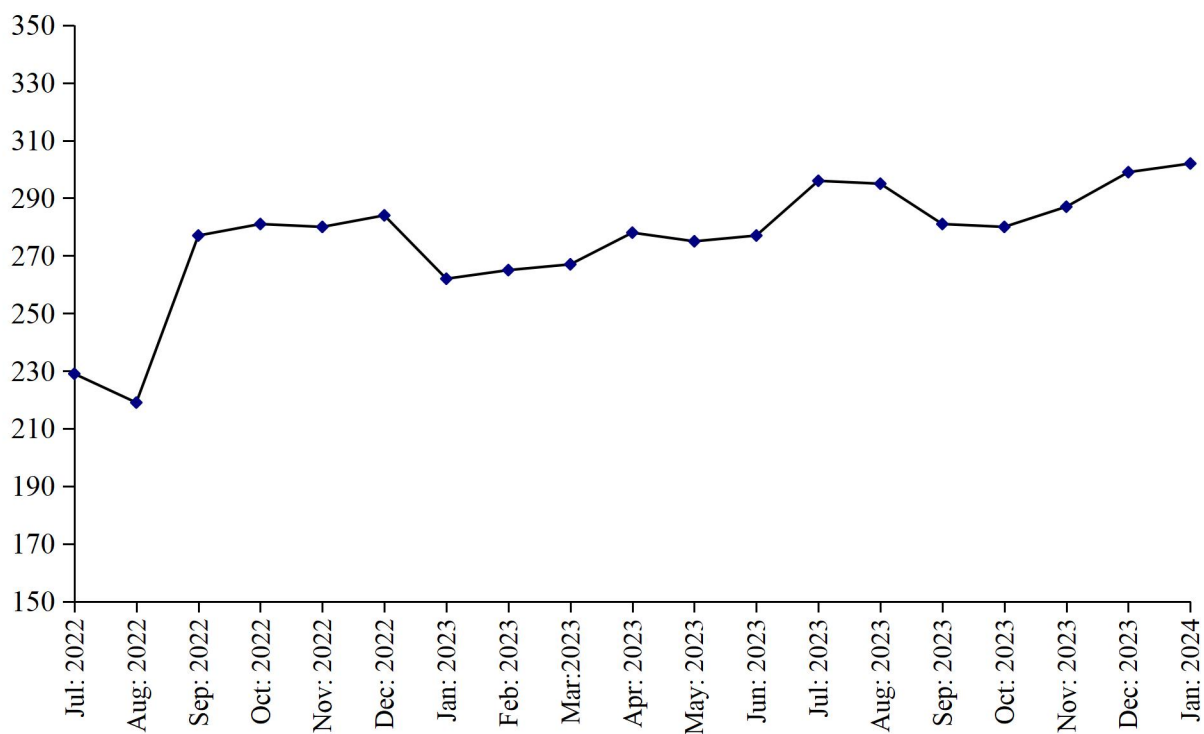
Employment

Total employment in these factories during the month was 8065 which is 0.1% higher than the last month. Out of this total employment 3302 were production workers. Total wages/salaries during the month were 303.0 million rupees.

(000 Nos.)

PRODUCTION OF TABLETS

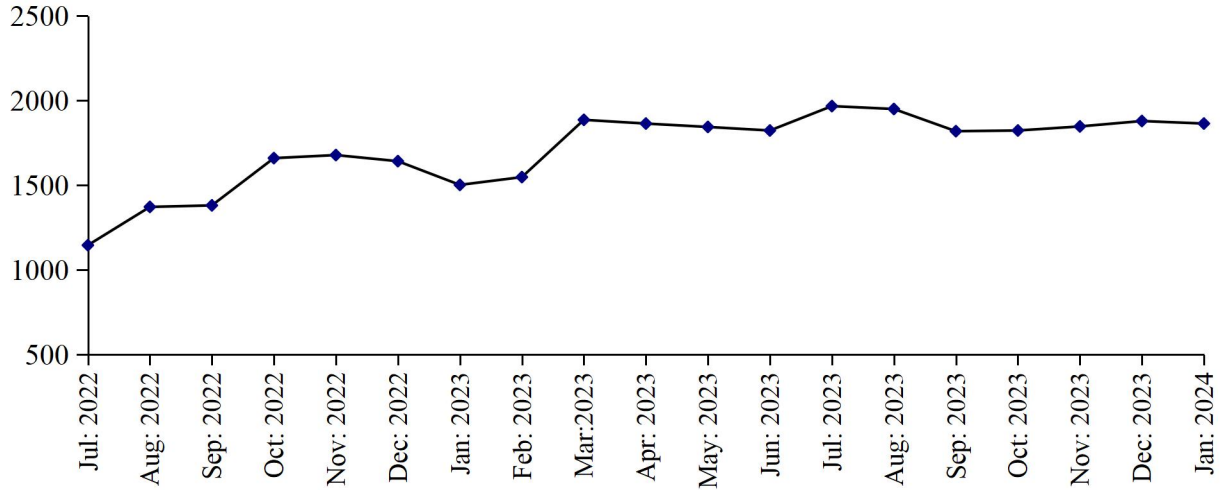
July 2022 to January 2024



PRODUCTION OF LIQUIDS

July 2022 to January 2024

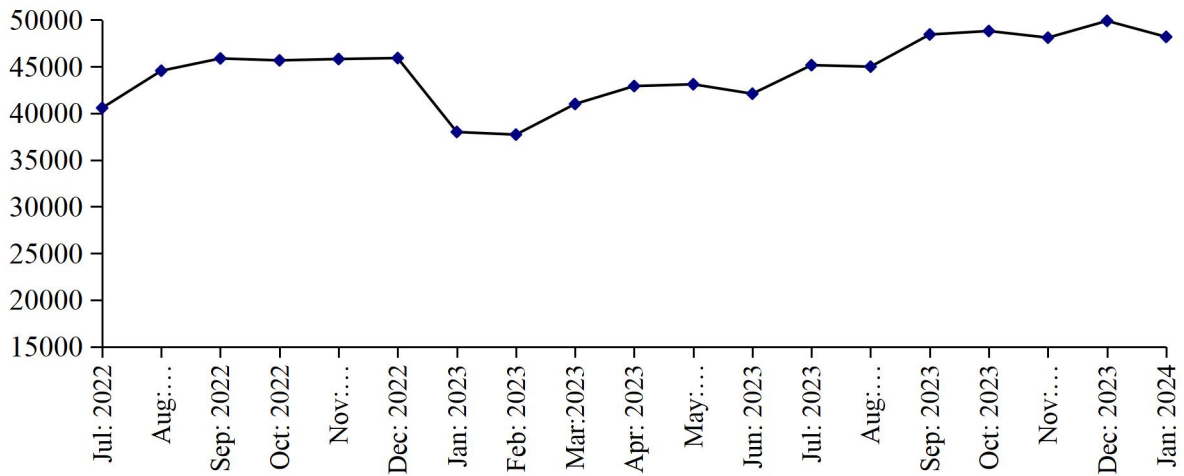
(000 Nos.)



PRODUCTION OF CAPSULES

July 2022 to January 2024

(000 Nos.)



PRODUCTION OF INJECTIONS

July 2022 to January 2024

(000 Nos.)

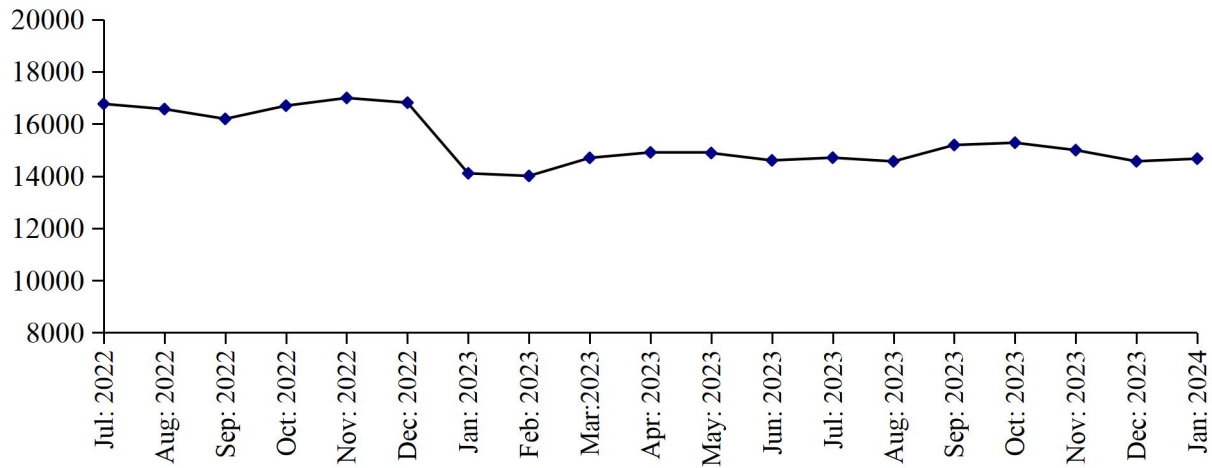


Table 35:MANUFACTURING ACTIVITY OF PHARMACEUTICAL INDUSTRY

Year (July – June) / Month	No. Of Reporting Factories	P R O D U C T I O N					
		Tablets (000 Nos.)	Liquids/ Syrups (000Ltrs.)	Capsules (000 Nos.)	Injections (000 Nos.)	Ointments (Kgs.)	Galanicals Tinctures/ Spirits (000 Ltrs.)
2007-08	38	2459558	23771	148007	110837	98499	87
2008-09	40	2286638	21267	121093	89615	105595	73
2009-10	40	2373104	23222	134594	99608	189148	62
2010-11	41	2486495	25211	165294	109708	187430	50
2011-12	41	2487861	25546	224249	132544	209841	41
2012-13	40	2873661	35457	339450	119598	196597	34
2013-14	36	2639613	16264	261919	137051	238299	185
2014-15	36	2593592	18838	310520	140827	229778	75
2015-16	36	2823449	21636	339151	133352	242367	46
2016-17	36	2530717	24085	295120	194717	732361	343
2017-18	35	2893883	15602	371962	149607	570468	121
2018-19	36	2826410	14207	420278	144788	567249	39
2019-20	36	2847315	14011	447276	119438	640721	74
2020-21	36	3096704	17504	481498	110866	595075	69
2021-22	36	3249998	15091	501673	180141	518897	54
2022-23	36	3195113	19346	513243	187290	647041	36
(Jul: – Jan:)	<u>36</u>	<u>1832034</u>	<u>10381</u>	<u>306402</u>	<u>114172</u>	<u>386971</u>	<u>21</u>
Jul:	36	228997	1146	40576	16771	53945	2
Aug:	36	218500	1372	44558	16573	59955	3
Sep:	36	276502	1381	45875	16197	60590	5
Oct:	36	281325	1660	45670	16702	60010	5
Nov:	36	280269	1678	45814	17000	50540	3
Dec:	36	284128	1642	45919	16819	50819	1
Jan:	36	262313	1502	37999	14110	51112	2
Feb:	36	265419	1548	37719	14010	50913	2
Mar:	36	267410	1886	40997	14702	51192	5
Apr:	36	278114	1864	42917	14912	53160	3
May	36	275019	1844	43107	14888	52996	3
Jun:	36	277117	1823	42097	14606	51809	2
<u>2023-24</u>							
(Jul: – Jan:)	<u>36</u>	<u>2040099</u>	<u>13164</u>	<u>335595</u>	<u>104001</u>	<u>366751</u>	<u>17</u>
Jul:	36	295912	1967	45157	14709	52097	3
Aug:	36	295092	1950	44997	14567	54447	3
Sep:	36	280967	1819	48440	15195	52675	2
Oct:	36	279900	1823	48814	15282	51915	2
Nov:	36	287402	1847	48102	14999	52049	2
Dec:	36	298724	1879	49898	14578	51458	3
Jan:	36	302102	1864	48187	14671	52110	2

Table 36: EMPLOYMENT AND WAGES / SALARIES OF PHARMACEUTICAL INDUSTRY

Year (July – June) / Month	No. Of Reporting Factories	E M P L O Y M E N T (Nos.)			WAGES /SALARIES (000 Rs.)	
		Total	Production Workers	Office Staff	Total	Production Workers
2007-08	38	5591	2914	2677	60574	27592
2008-09	40	5737	3115	2622	75446	35208
2009-10	40	5967	3294	2673	84295	41482
2010-11	41	7468	3475	3993	109964	38722
2011-12	41	7802	3518	4284	122250	38078
2012-13	40	7619	3397	4222	128323	37873
2013-14	36	7255	3043	4212	141281	37844
2014-15	36	7271	3136	4135	149144	37763
2015-16	36	6887	2887	4000	142875	38347
2016-17	36	7069	3338	3731	166039	42770
2017-18	35	7190	3095	4095	180431	46461
2018-19	36	7287	3080	4207	186677	48238
2019-20	36	7926	3244	4682	215121	53959
2020-21	36	7726	3388	4338	241910	59134
2021-22	36	8092	3318	4774	263957	61029
2022-23	36	8048	3290	4758	277034	64865
(Jul: – Jan:)	36	8061	3307	4757	274148	63329
Jul:	36	8080	3313	4767	268248	61642
Aug:	36	8043	3319	4724	270475	61754
Sep:	36	8060	3324	4736	271141	61847
Oct:	36	8072	3327	4745	272211	61902
Nov:	36	8067	3286	4781	278191	65212
Dec:	36	8060	3280	4780	279040	65456
Jan:	36	8040	3268	4772	279510	65740
Feb:	36	8034	3262	4772	279010	65602
Mar:	36	8033	3260	4773	280449	66102
Apr:	36	8028	3256	4772	282779	67127
May	36	8036	3266	4770	281229	67999
Jun:	36	8027	3319	4708	282003	68000
2023-24						
(Jul: – Jan:)	36	8051	3304	4748	298804	71308
Jul:	36	8030	3321	4709	293999	69000
Aug:	36	8033	3324	4709	293800	69119
Sep:	36	8054	3292	4762	293200	69219
Oct:	36	8054	3290	4764	294000	69300
Nov:	36	8060	3297	4763	303010	73029
Dec:	36	8063	3300	4763	305110	74000
Jan:	36	8065	3302	4763	308510	75483

* = Monthly average over the seven months.

**LIST OF IMPORTANT TELEPHONES
BUREAU OF STATISTICS, PUNJAB AND ITS FIELD OFFICES**

NAME OF OFFICERS	DESIGNATION	OFFICE TELEPHONE
Sajid Rasul	Director General	042-99232901
Saira Abid	Deputy Director (CIS)	042-99232907
Sana Jabbar	Assistant Director (CIS)	-do-
Sana Ashraf	Statistical Officer (CIS)	-do-
Muhammad Kashif	Statistical Officer (CIS)	-do-
Rizwan Bashir	Statistical Officer (CIS)	-do-
Muhammad Irfan	Statistical Officer (CIS)	-do-
Muhammad Haris	Statistical Officer (CIS)	-do-
DESIGNATION	BUREAU'S FIELD OFFICES/ADDRESS	
Deputy Director	Tosha Khana Near Cholistan Development Authority, Bahawalpur	062-9250193
Deputy Director	House No. 70-A, Khyaban-e-Sarwar, Dera Ghazi Khan	064-9330108
Deputy Director	2nd Floor Azam Plaza, Near Passport Office, Bukhari Road, Gujranwala	055-9200419
Deputy Director	P-45, Main Road, Al Faiz Colony, Satiana Road Faisalabad	041-9330531
Deputy Director	Near Circuit House, Multan	061-9200930
Deputy Director	Abad Complex Murree Road, Rawalpindi	051-9292035
Deputy Director	52 Umar Park, Sargodha	048-3765387
Deputy Director	34-H Shadman Town, Sahiwal	0404-4507560
Assistant Director	House No. 24, Z-Block, Model Town, Bahawalnagar	063-9330002
Assistant Director	Mohallah Mandi Town, House No.198 Block No. 12 Near Pracha Filling Station, Jhang Road, Bhakkar	0453-9200338
Assistant Director	Street No.4 2nd Floor Mohallah Shumali Chah Loharn Behkari Road, Chakwal	0543-554086
Assistant Director	House No.720-A Gulberg Colony, Kasur	049-2723615
Assistant Director	House No. 190, Employees Colony, Layyah	0606-920273
Assistant Director	Gallah Huntar Pura, Opposite Larri Adda, Christian Town, Sialkot	052-4291219
Assistant Director	Opposite Govt. Vocational College, Nabi Pura, Hiran Minar Road, Sheikhupura	056-3791770